



CLINICAL AUDIT TOOL

# RELEASE NOTES v3-1/3.2

November 2011

## Document Release

29/11/2011



**Microsoft**  
CERTIFIED  
*Partner*



THE ROYAL AUSTRALIAN  
COLLEGE OF  
GENERAL PRACTITIONERS

### COMPANY CONTACT DETAILS

#### Head Office:

Pen Computer Systems Pty Ltd  
Level 6, 10-14 Smith St  
PARRAMATTA NSW 2150  
Phone: +61 2 9635 8955  
Fax: +61 2 9635 8966  
Email: [enquiries@pencs.com.au](mailto:enquiries@pencs.com.au)  
Web: [www.pencs.com.au](http://www.pencs.com.au)

#### Melbourne Office:

Pen Computer Systems Pty Ltd  
Level 5, 434 St Kilda Rd  
MELBOURNE VIC 3004  
Phone: +61 3 9866 8477  
Fax: +61 3 9866 5699

#### Document Contact:

Christine Chidgey  
Project Officer  
Phone: +61 3 9866 8477  
[christine.chidgey@pencs.com.au](mailto:christine.chidgey@pencs.com.au)



# CLINICAL AUDIT TOOL

## CLINICAL AUDIT RELEASE NOTES V 3.1/3.2 – NOVEMBER 2011

These release notes are provided to give an overview of the issues that have been reported and fixed in this release of Clinical Audit. Where necessary explanatory notes are given about new or upgraded functionality.

Some of the new functionality will not be activated for some Clinical Systems as additional data needs to be extracted. This is indicated by an \* next to the issue number. Functionality will be available once the vendors have the opportunity to update their extraction routines.

1	INSTALLATION .....	3
2	USER INTERFACE .....	3
3	DATA EXTRACTS.....	3
4	FILTERS .....	3
5	CHARTS .....	4
6	CONDITIONS .....	9
7	MEDICATIONS.....	9
8	REPORTS .....	9
9	PRINTING.....	10





## CLINICAL AUDIT TOOL

### 1 Installation

PCS Clinical Audit version 3 requires the Microsoft .NET Framework version 3.5 SP1 to be installed prior to installing PCS Clinical Audit. This can be downloaded from the Microsoft website.

Practices should contact their IT administrator if this is not already installed.

### 2 User Interface

No changes have been added here.

### 3 Data Extracts

\* will not be available if the Clinical System extract has not been updated

Issue	Description	Release Notes
*	New MBS Items for GP Mental Health Care Plan introduced 1 <sup>st</sup> November 2011 have been added	MBS item numbers for GP Mental health careplan (2700, 2701, 2715, 2717) have been added to the data extract. Old numbers 2702 and 2710 will still be extracted. These are grouped under MBS Item GP MHCP and the reidentify report righthand column will display the item number and date billed.
*	MBS Item 11506 added	MBS item number 11506 for Respiratory has been added (to compliment the Spirometry tab)

### 4 Filters

No changes have been added here.



## CLINICAL AUDIT TOOL

## 5 Charts

Issue	Description	Release Notes
	Screening Tab <ul style="list-style-type: none"><li>➤ Pap Smear</li><li>➤ FOBT</li></ul>	<p>A 'Screening' tab has been developed by General Practice Victoria (GPV) for the identification of patients who meet the criteria for the screening of</p> <ol style="list-style-type: none"><li>1. Cervical Cancer,</li><li>2. Breast Cancer and</li><li>3. Colorectal Cancer.</li></ol> <p>The Pap Smear tab is unchanged from the existing tab but has been moved under the new 'Screening' tab.</p> <p>The Mammogram tab will only available with compatible PrimaryCare Sidebar® functionality</p> <p>The FOBT tab includes FOBT Last recorded and FOBT Orders and Results tabs</p>
	MBS Items	<p>New item numbers have been added</p> <ul style="list-style-type: none"><li>• GP Mental Health Care Plan (GP MHCP)</li><li>• 11506 (Respiratory)</li></ul>



## CLINICAL AUDIT TOOL

	Childhood Immunisations	<p>The Immunisations &gt; Child Schedule tab provides a pie chart for children aged 0-7 years with the following categories:</p> <ul style="list-style-type: none"><li>• Fully immunised – a child has received all the immunisations required for their age (Tables 5.1 and 5.2).</li><li>• Up to date – a child is not fully immunised but no dose is due (there is a minimum time period between doses – refer Table 5.3)</li><li>• Due – immunisations are due now</li><li>• Overdue – immunisations are overdue</li></ul> <p>The worksheet button provides a list of patients with the following details:</p> <ul style="list-style-type: none"><li>• age in months</li><li>• immunisation status</li><li>• number of doses per immunisation</li></ul> <p>The worksheet is an aid to help the practice to find children who are not up to date and identify which immunisations are still required. As the vaccination pathways for different vaccine brands can differ the practice should check patient records where a child is listed as due or overdue.</p>
--	-------------------------	---

The following documents have been referenced for Childhood Immunisations:

- The Childhood Immunisation Schedule is provided by the National Immunisation Program Schedule available at <http://immunise.health.gov.au/internet/immunise/publishing.nsf/Content/nips2>
- The Australian Childhood Immunisation Register (ACIR) Due and Overdue rules available at <http://www.medicareaustralia.gov.au/provider/pubs/program/acir.jsp>



CLINICAL AUDIT TOOL

**Table 5.1: Immunisation list for children**

HepB	Hepatitis B
DTPa	Diphtheria, tetanus and whooping cough (acellular pertussis)
Hib	Haemophilus influenza
IPV	Polio (inactivated poliomyelitis)
7vPCV	Pneumococcal conjugate
Rotavirus	Rotavirus
MMR	Measles, mumps and rebecca
MenCCV	Meningococcal C
HepA (for ATSI)	Hepatitis A
VZV	Chickenpox (varicella)
23vPPV	Pneumococcal polysaccharide

**Table 5.2: Immunisation total recommended doses by age**

Immun./ Age mths	0	2	4	6	12	18	24	48
HepB - Birth	1							
HepB		1	2	3				
DTPa		1	2	3				4
Hib		1	2	3	4			
IPV		1	2	3				4
7vPCV		1	2	3				
Rotavirus		1	2	3				
MMR					1			2
MenCCV					1			
HepA (for ATSI)							1 or 2 <sup>1</sup>	
VZV						1		
23vPPV							1	

<sup>1</sup> Two doses of hepatitis A vaccine are required for Aboriginal and Torres Strait Islander children living in areas of higher risk.





**Table 5.3: Immunisation Due and Overdue rules based on  
'The Australian Childhood Immunisation Register (ACIR) Due and Overdue rules'**

Immunisation	Dose	Fully Immunised*/ Up to date - Additional Criteria	Up to date	Due	Overdue
HepB - Birth - is only valid up to 7 days of age	1	Child age > 7days*		In first 7 days	
HepB	1			2 months	3 months
	2		Last dose < 2months	4 months	5 months
	3		Last dose < 2months	6 months	7 months
DTPa	1			2 months	3 months
	2		Last dose < 2months	4 months	5 months
	3		Last dose < 2months	6 months	7 months
	4		Last dose < 6months	48 months	49 months
Hib	1	Dose 1 > 15months		2 months	3 months
	2	Dose 2 > 15months	Last dose < 2months	4 months	5 months
	3	Dose 3 > 15months	Last dose < 2months	6 months	7 months
	4		Last dose < 2months	12 months	13 months
IPV	1			2 months	3 months
	2		Last dose < 2months	4 months	5 months
	3	Dose 3 > 48months	Last dose < 2months	6 months	7 months
	4		Last dose < 6months	48 months	49 months



# CLINICAL AUDIT TOOL

7vPCV	1	Dose 1 > 17months		2 months	3 months
	2	Dose 2 > 12months	Last dose < 2months	4 months	5 months
	3		Last dose < 2months	6 months	7 months
Rotavirus		If no dose by 14weeks then no doses due/overdue			
	1	Dose 1 > 28weeks		2 months	3 months
	2	Dose 2 > 28weeks		4 months	5 months
	3	No doses due/overdue > 32weeks		6 months	7 months
MMR	1			12 months	13 months
	2			48 months	49 months
MenCCV	1	Imm can be given in more than 1 dose – a dose must exist after 12months*		12 months	13 months
HepA (for ATSI)	1	2 doses are due in the second year of life*		12 months	25 months
	2			18 months	25 months
VZV	1			18 months	19 months
23vPPV	1			18 months	19 months



## CLINICAL AUDIT TOOL

### 6 Conditions

No changes have been added here.

### 7 Medications

No changes have been added here.

### 8 Reports

Issue	Description	Release Notes
	NT AHKPI Report	<p>The NT AHKPI Report can be found under the report tab: Standard Reports &gt; Indicator Sets &gt; NT AHKPI (Figure 8.1).</p> <p>It is available for all CAT users providing their version of the data set is at the minimum level (version 1_6) to support the report.</p> <p>An NT AHKPI Quick reference Guide is available from the CAT Help page <a href="http://help.pencs.com.au/cat.htm">http://help.pencs.com.au/cat.htm</a></p>
	National KPI Report	<p>The National KPI Report can be found under the report tab: Standard Reports &gt; Indicator Sets &gt; National KPI (Figure 8.1).</p> <p>It is available for all CAT users providing their version of the data set is at the minimum level (version 1_6) to support the report.</p> <p>The report is provided in a summary and extended format. A button at the top of the report is used to toggle between the 2 options.</p>



## CLINICAL AUDIT TOOL

	<p><b>Improvement Foundation Reporting</b></p> <p>1) Reports added:</p> <ul style="list-style-type: none"><li>• NT AHKPI</li><li>• National KPI</li></ul> <p>2) New Data Submission option</p>	<p>Reports that can be sent to the Improvement Foundation Portal now include</p> <ul style="list-style-type: none"><li>• NT AHKPI</li><li>• National KPI</li></ul> <p>The Prepare Report button from the APCC Report is no longer in use. A new Data Submission option available from the CAT menu bar has replaced it (Figure 8.2).</p> <p>Refer to the Clinical Audit APCC User Guide for more information.</p>
--	--	---

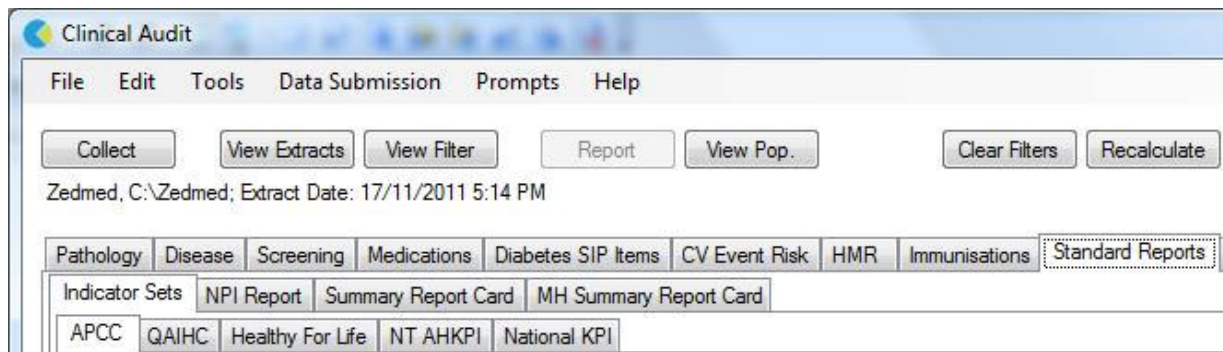


Figure 8.1 Standard Reports > Indicator Sets

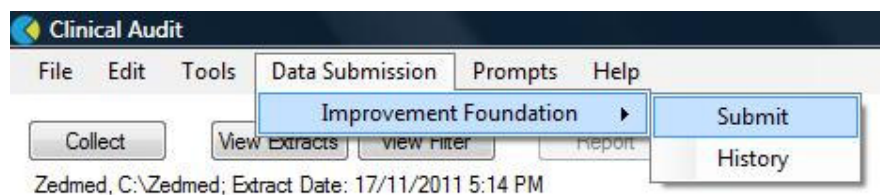


Figure 8.2 Improvement Foundation Data Submission option

## 9 Printing

No changes have been added here.

