



Clinical Audit

RELEASE NOTES v 2.0



1993 - 2008

PEN COMPUTER SYSTEMS PTY LTD

23/06/2008

COMPANY CONTACT DETAILS

Head Office:

Pen Computer Systems Pty Ltd
Level 6, 10-14 Smith St
PARRAMATTA NSW 2150

Phone: 61 2 9635 8955
Fax: 61 2 9635 8966
Email: enquiries@pencs.com.au
Web: www.pencs.com.au

Melbourne Office:

Pen Computer Systems Pty Ltd
Level 5, 434 St Kilda Road
MELBOURNE VIC 3004

Phone: 61 3 9866 8477
Fax: 61 3 9866 5699

Contact for this Submission:

Christine Chidgey
Project Officer

Phone: 03 9866 8477
eMail: Christine.Chidgey@pencs.com.au

CLINICAL AUDIT RELEASE NOTES V 2.0

These release notes are provided to give an overview of the issues that have been reported and fixed in this release of Clinical Audit. Where necessary explanatory notes are given about new or upgraded functionality.

Some of the new functionality will not be activated yet for Best Practice and Genie Solutions users as additional data needs to be extracted. This is indicated by an * next to the issue number. Functionality will be available once the vendors have the opportunity to update their extraction routines.

The release notes are provided under the following headings.

- 1. INSTALLATION 4**
- 1.1. BEST PRACTICE/GENIE USERS - INSTRUCTIONS FOR UPGRADING TO CLINICAL AUDIT V 2.0 4
- 2. USER INTERFACE 6**
- 3. DATA EXTRACTS..... 6**
- 4. FILTERS 7**
- 5. CHARTS..... 8**
- 6. CONDITIONS 9**
- 7. MEDICATIONS 10**
- 8. REPORTS..... 11**
- 9. PRINTING 11**
- 10. APPENDICES FOR NEW FILTERS ADDED 12**
- 10.1. RENAL IMPAIRMENT – CODES 12
- 10.2. NEW MEDICATIONS MAPPINGS 12

1. Installation

This release of Clinical Audit allows the user to choose which GP Clinical Desktop System they want to collect data from. The following systems are supported:

- Medical Director 2
- Medical Director 3
- Best Practice version 1.6.0.395 or later
- Genie version 7.5.3 or later

Best Practice and Genie users will need to uninstall their current version of CAT and install the new version.

Medical Director users will be prompted to automatically update their version of CAT.

Once you have upgraded, login and use the 'Edit > Preferences' menu option to set your Clinical Desktop System and database location.

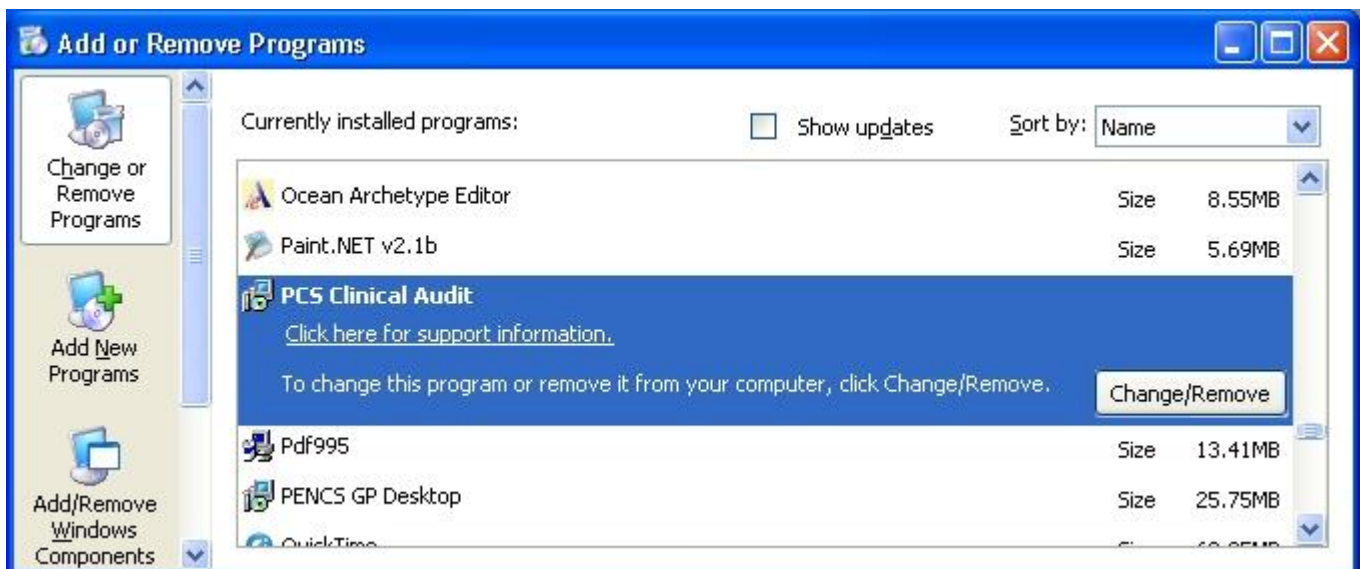
1.1. Best Practice/Genie Users - Instructions for Upgrading to Clinical Audit v 2.0

Please follow the instruction below to upgrade to Clinical Audit v 2.0.1

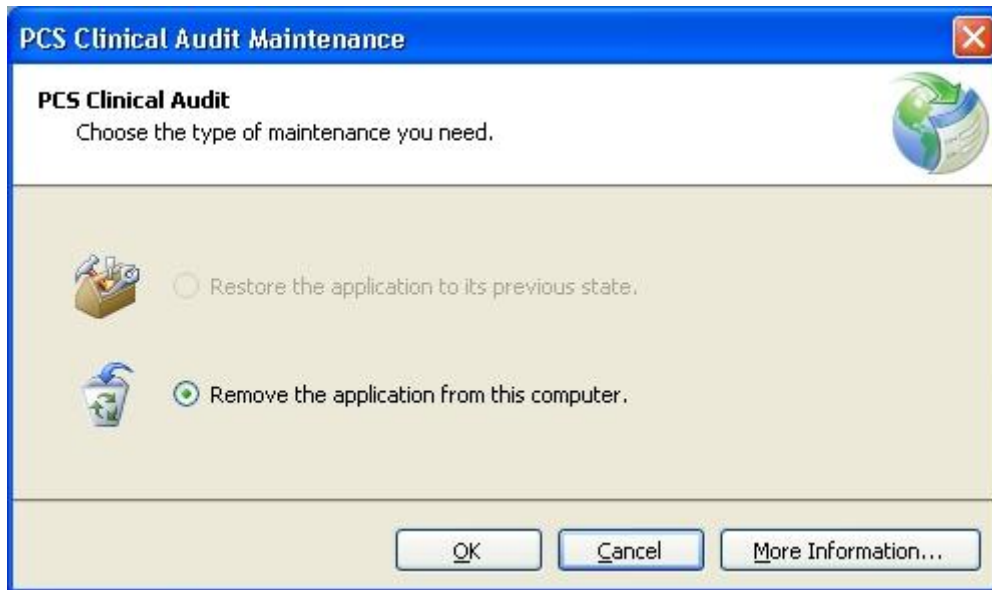
Uninstall your current version

If you are currently running a version of Clinical Audit you will need to uninstall it. To uninstall your current version follow the steps provided below.

1. Click the 'Start' bar
2. Click 'Control Panel'
3. Double-click 'Add or Remove Programs'
- your list of currently installed programs will be populated
4. Scroll down the list and find 'Clinical Audit'
5. Highlight the '**PCS Clinical Audit for Best Practice**' or '**PCS Clinical Audit for Genie**' entry as shown below



6. Click the 'Change/Remove' button



7. Click 'OK'
8. When the application removal has completed 'PCS Clinical Audit' will no longer be in your list of currently installed programs.

Install Clinical Audit 2.0

1. Go to the URL <http://www.pencs.com.au/clickonce/clinicalaudit/publish.htm>
2. Click the 'Install' button and follow the prompts

2. User Interface

Issue	Description	Release Notes
	License Key on the Login Screen	<p>The license key is generated the first time a user logs in by leaving the license key field blank. You don't need to worry about it after that.</p> <p>The license key has been added to CAT to allow custom CAT modules to be developed in the future to meet specific user requirements.</p>

3. Data Extracts

Issue	Description	Release Notes
2423	Ensure backwards compatibility of data sets with new releases of CAT	Old extracts can still be loaded into the new version of CAT. New functionality will be greyed out for old extracts.
2722	Preference path for data extracts crashes if user puts in an invalid path	The user will now get an error before the data extraction starts if the preference path is invalid.
2742	Snapshots collected on the same day were not ordered by time of collection	This will no longer be an issue as the data extracts are now date and time stamped
2756	If bad DB path or application is not installed display a message to the user	The user will receive an error message if they try to collect from an application that is not installed or a database that doesn't exist.
2774	Error was arising if two sessions connected to a terminal server were "Collecting" at the same time	This error was due to one session having the file locked. This will no longer be an issue as the data extracts are now date and time stamped
3146	Prevent data folder location being defaulted to C:\ClinicalAudit with every update	<p>Each release of Clinical Audit to date has reset the users preferred data folder location to the default value of C:\ClinicalAudit.</p> <p>This release will fix this by using the registry to store this setting.</p> <p>The initial install of this release will require the user to reset their preferred location again but from then on it will be remembered.</p>
3228	When 0 patients are extracted (ie. empty database) get an error when dataset loads	This has been corrected to simply show a population of 0.

3300	Browse to MD2 Data set	Users of MD2 are provided with a browse button to find the database they wish to collect from.
3464	Allow selection of Clinical system for data extraction	Users can now select the Clinical application they wish to extract data from in the Preferences dialog box (MD2, MD3, Best Practice and Genie are supported)
3522 and 3533	APCC code alignment	<p>The following codes have been aligned to APCC guideline</p> <p>Undefined Diabetes – ‘Diabetes Eye Care’ has been removed</p> <p>Statins – Atorvastatin/Amlodipine and Rosuvastatin have been added</p>

4. Filters

- Functionality not yet available for Best Practice and Genie users.

Issue	Description	Release Notes
2770	Condition Filter – allow ‘No’ to be selected against a condition so can search for patients without a coded condition	A ‘No’ tick box has been added against each condition.
3300 *	GP Filter – add ability to filter data by provider	<p>A new filter tab has been added for ‘Providers’. This allows providers to be ticked on/off for filtering.</p> <p><u>Method of assigning a patient to a GP</u></p> <p>Where there is more than one GP in the practice, patients will be assigned to a particular GP based on which GP they were most frequently seen by in recent consultations.</p> <ul style="list-style-type: none"> • Patients will be assigned to the GP who saw them for the highest number of consultations in the previous 18 months. • Where there is no consultation recorded in the previous 18 months, the patient will be assigned to the GP who saw them most recently, up to 5 years ago.
3202	Pregnancy Filter – add ability to filter on pregnancy	<p>Pregnancy Yes/No filtering has been added to the ‘Conditions’ tab under ‘Other’</p> <p>Pregnancy is true of the patient has an uncompleted pregnancy under the Obstetrics tab.</p>

3400	DVA filter	<p>DVA/non DVA filtering has been added to the 'General' tab</p> <p>DVA is true if the patient details screen has</p> <ul style="list-style-type: none"> the Pension Status set to 'Full DVA' or 'Limited DVA' or the DVA No. field has a value
3403	Medications Tab – add more medications for selection	<p>The medications tab has been split into 2 tabs to allow for more medication selection</p> <ul style="list-style-type: none"> Medications – Heart (which contains all the existing groups except the Hyperglycaemics) Medications – Other <p>See Medications section for details.</p>
3406 *	Renal Impairment – add ability to filter on this condition	<p>Renal Impairment Yes/No filtering has been added to the 'Conditions' tab under 'Other'.</p> <p>Please refer to the User Guide for a list of Medical Director diagnosis codes that map to this condition. NOTE: These are also provided in the Appendices to this document.</p>

5. Charts

Issue	Description	Release Notes
2711	BMI graph – add the actual average number to segments of the BMI Average graph	This change has been made.
2769	BMI graph – add nothing recorded and pie segment Morbid Obesity (40+)	<p>BMI now has a new tab for Missing Data which allows patients with no weight, not height or neither to be identified.</p> <p>New segment for BMI 40+ is added</p>
3405	GFR graph – add additional pie segments	<p>GFR pie chart to have extra sections to help identify patients at risk of Renal Failure:</p> <p>>100 = Normal 60-100mg/ml = Stage 1 30-60 mg/ml = Stage 2 15-30mg/ml = Stage 3 <=15mg/ml = Stage 4</p>
3438	BP graph – add pie segment for 140/90	This additional pie segment has been added to give more flexibility in finding patients.
3492	BMI and CV graphs – add total counts to graphs	Additional count details have been added to these 2 graphs.

6. Conditions

* Functionality not yet available for Best Practice and Genie users.

Issue	Description	Release Notes
2704	MD users only: Conditions Asthma and Depression should only be picked up if they are active conditions	<p>MD Releases of Clinical Audit to date have flagged conditions as true where the patient has ever had the condition. This is because the conditions Clinical Audit currently looks at are chronic ie. once you have them you always have them.</p> <p>It has been noted that Asthma and Depression are conditions that the patient can recover from.</p> <p>Clinical Audit will now only flag these if they are marked as active.</p> <p><i>Refer to the CAT User Guide Version 2.0 Appendices for your GP Desktop System for details on how conditions are collected.</i></p>
3406 *	Renal Impairment – add ability to filter on this condition	<p>Renal Impairment Yes/No filtering has been added to the 'Conditions' tab under 'Other'.</p> <p>Please refer to the User Guide for a list of Medical Director diagnosis codes that map to this condition. NOTE: These are also provided in the Appendices to this document.</p>

7. Medications

* Functionality not yet available for Best Practice and Genie users.

Issue	Description	Release Notes
3298	MD users only: Medications should be collected whether they have a repeat against them or not	<p>Prior to this release, MD medications were only collected if they were prescribed with a repeat. A repeat prescription was considered an indication of long term medication for chronic disease.</p> <p>This was resulting in inaccurate data for medications such as Aspirin which can be purchased over the counter.</p> <p>This restriction has now been removed. Medications are now collected regardless of repeats.</p> <p><i>Refer to the CAT User Guide Version 2.0 Appendices for your GP Desktop System for details on how medications are collected.</i></p>
3403 *	Medications Tab – add more medications for selection	<p>New medications added are:</p> <ul style="list-style-type: none"> Anticoagulants – have added <ul style="list-style-type: none"> • Warfarin • Clopidogrel Beta Blockers – divided into some sub groups reflecting usage Antidiabetics – have added <ul style="list-style-type: none"> • Metformin Mental Health – Antipsychotics Corticosteroids – Glucocorticoids Pain Relief – NSAIDs and COX2 Respiratory – Asthma – Inhaled and COPD <p>Please refer to the User Guide for a list of Medical Director medication groups that map to these categories. NOTE: These are also provided in the Appendices to this document.</p>

8. Reports

Issue	Description	Release Notes
2514	Create NPI Reports	The following NPI Reports for 30/06/2008 have been added: <ul style="list-style-type: none"> • N_DIA 4.1 for reporting on Diabetes patients HbA1c results < 12mths • N_DIA 4.2 for reporting on Diabetes patients cholesterol results < 12mths • N_ASM 4.1 for reporting on Asthma patients smoking status
2729	Extra columns for re-identified patients	A column for 'Last Visit' has been added to the 'View Pop.' Report.
3163	MD collect error: Diabetes SIP report is picking up the date recorded rather than date of exam for Foot Check and Eye Checks	This error has now been fixed.
3224	MD collect error: Diabetes SIP report Foot Checks is only checking the Podiatrist date but should also check the Foot Check date – either date is valid for a foot check to be claimed	This error has now been fixed.

9. Printing

Issue	Description	Release Notes
3393	Printing problems when printing the patient list – only first page is printing and some blank pages are printing	The report viewer has been upgraded.

10. Appendices for New Filters Added

10.1. Renal Impairment – Codes

Renal Impairment	Acute renal failure Chronic Renal Failure Cirrhosis with acute renal failure Dialysis - haemodialysis Haemodialysis Hemodialysis Hepatorenal syndrome Impairment - Renal Kidney failure Kidney failure - acute Kidney failure - chronic Kidney Impairment Renal artery stenosis Renal Damage Renal dialysis Renal failure Renal failure due to cirrhosis Renal Impairment Renal insufficiency - acute Renal insufficiency - chronic Stenosis - Renal artery Uraemia Kidney Disease – Chronic – Stage 1 -5 Renal Disease – Chronic – Stage 1 -5 Chronic Kidney Disease - Stage 1 -5 CKD (Chronic Kidney Disease) – Stage 1 -5
------------------	---

10.2. New Medications Mappings

Anticoagulants	
Warfarin	Generic Names: Warfarin
Clopidogrel	Generic Names: Clopidogrel
Beta Blockers	
Antihypertensives	Generic Names: Atenolol Bisoprolol Carvedilol Labetalol Metoprolol Oxprenolol Pindolol Propranolol

Chronic Heart Failure	<p>Generic Names:</p> <p>Bisoprolol Carvedilol</p> <p>Brand Names: [these are controlled release preparations of Metoprolol and Metoprolol Succinate]</p> <p>Toprol-XL Toprol-XL Titration Pack</p>
Myocardial Infarction	<p>Generic Names:</p> <p>Atenolol Betaxolol Bisoprolol Carvedilol Esmolol Labetalol Metoprolol Oxprenolol Pindolol Sotalol</p>
Antidiabetics	
Metformin	<p>Generic Names:</p> <p>Metformin Rosiglitazone/metformin Metformin hydrochloride/glibenclamide</p>
Mental Health	
Antipsychotics	<p>Class:</p> <p>Nervous System > Antipsychotics</p>
Corticosteroids	
Glucocorticoids	<p>Class:</p> <p>Hormones and Metabolic Products > Adrenal Hormones > Corticosteroid > Corticosteroid-Glucocorticoid</p>

Pain Relief	
NSAIDs	<p>Generic Names:</p> <p>Diclofenac Diclofenac/Misoprostol Ibuprofen Ibuprofen Lysine Ibuprofen/Codeine Ibuprofen/Codeine Phosphate Ibuprofen/Pseudoephedrine Hydrochloride Indomethacin Ketorolac Ketoprofen Ketorolac Trometamol Mefenamic Acid Naproxen Piroxicam Sulindac Tiaprofenic Acid</p> <p>Class:</p> <p>Musculoskeletal Agents > Antiinflammatory Agents> Systemic NSAIDs > COX 2 Inhibitors</p>
COX2	<p>Class:</p> <p>Musculoskeletal Agents > Antiinflammatory Agents> Systemic NSAIDs > COX 2 Inhibitors</p>
Respiratory	
Asthma – Inhaled	<p>Class:</p> <p>Respiratory > Antiasthmatic and/or COPD preparations > Antiasthmatic Preventative > Steroid – Inhaled</p> <p>Generic Names:</p> <p>Budesonide</p>
COPD	<p>Generic Names:</p> <p>TIOTROPIUM</p>