



CLINICAL AUDIT TOOL

RELEASE NOTES v2-12

August 2011

Document Release

01/08/2011



Microsoft
CERTIFIED
Partner



THE ROYAL AUSTRALIAN
COLLEGE OF
GENERAL PRACTITIONERS

COMPANY CONTACT DETAILS

Head Office:

Pen Computer Systems Pty Ltd
Level 6, 10-14 Smith St
PARRAMATTA NSW 2150
Phone: +61 2 9635 8955
Fax: +61 2 9635 8966
Email: enquiries@pencs.com.au
Web: www.pencs.com.au

Melbourne Office:

Pen Computer Systems Pty Ltd
Level 5, 434 St Kilda Rd
MELBOURNE VIC 3004
Phone: +61 3 9866 8477
Fax: +61 3 9866 5699

Document Contact:

Christine Chidgey
Project Officer
Phone: +61 3 9866 8477
christine.chidgey@pencs.com.au



CLINICAL AUDIT TOOL

CLINICAL AUDIT RELEASE NOTES V 2.12 – AUGUST 2011

These release notes are provided to give an overview of the issues that have been reported and fixed in this release of Clinical Audit. Where necessary explanatory notes are given about new or upgraded functionality.

Some of the new functionality will not be activated for some Clinical Systems as additional data needs to be extracted. This is indicated by an * next to the issue number. Functionality will be available once the vendors have the opportunity to update their extraction routines.

- 1 INSTALLATION3
- 2 USER INTERFACE3
- 3 DATA EXTRACTS4
- 4 FILTERS5
- 5 CHARTS6
- 6 CONDITIONS6
- 7 MEDICATIONS6
- 8 REPORTS7
- 9 PRINTING9





CLINICAL AUDIT TOOL

1 Installation

No changes have been added here.

2 User Interface

Issue	Description	Release Notes
3766	Date of extract loaded should be displayed	The date of the extract currently loaded has been added to the status line text (Figure 2.1).
	APCC Preferences tab has been renamed	<p>The APCC Preferences tab has been renamed to Improvement Foundation to reflect the broader range of reports that can now be submitted (Figure 2.2).</p> <p>The Practice Token field has been renamed Health Service Token.</p> <p>The Report Data Categories to be submitted to the IF are selected here, rather than at the time of submission, by clicking the Edit button. They can be reviewed at submission.</p> <p>Refer to the Clinical Audit APCC User Guide for more information.</p>

Medical Director 3, HCN Sample Data; Extract Date: 9/02/2011

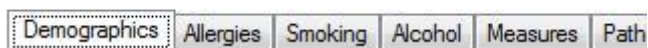


Figure 2.1 Status line text

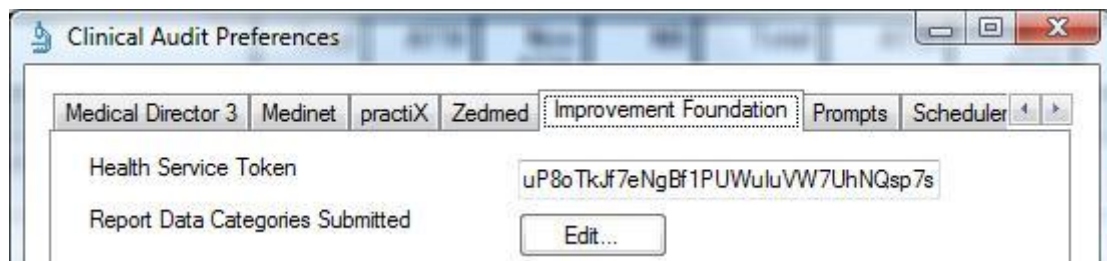


Figure 2.2 IF Preferences tab





3 Data Extracts

Issue	Description	Release Notes
	Communicare Compatibility	<p>A Communicare preferences tab has been added.</p> <p>The Communicare Extractor (Figure 3.1) is called from CAT and provides selections for extraction of all Communicare Localities or individual Communicare Localities.</p> <p>A Communicare Mappings Documents will be available from the CAT User Guides Help page.</p>
	Medinet Compatibility	<p>A Medinet preferences tab has been added.</p> <p>The Medinet data extraction is done from within the Medinet application. Please refer to the Clinical Audit User Guide v2-12 Part 2 Functionality.doc Appendix A for collection instructions.</p> <p>A Medinet Mappings Documents is currently being developed.</p>

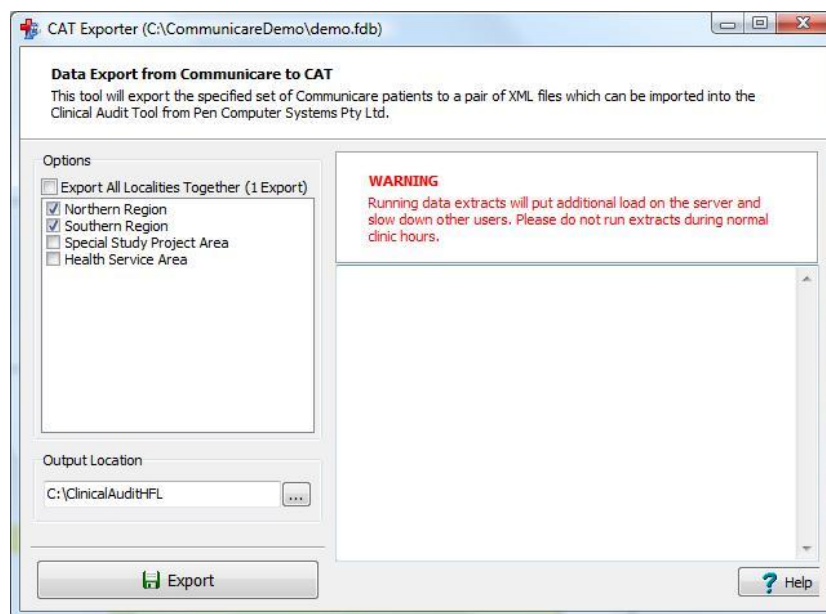


Figure 3.1 Communicare CAT Extracter options



CLINICAL AUDIT TOOL

4 Filters

Issue	Description	Release Notes
3650	Filter for patients that have no visit date recorded	A selection for Last Visit = None has been added.
7951	Filter for patients that have not had a visit in the last X months	A drop down box for 'Has Not Visited in last X mths' has been added where the user can choose the number of months for X
6120	Postcode wildcard filter	A postcard wildcard filter has been added using the * as a wildcard
6842	Filter for City/Suburb	A filter for City/Suburb has been added. This filter works the same way as the Postcode filter and allows wildcard searching using the * as a wildcard
7704	Visits in last 6 months selection has been increased	The drop down selection for visits in the last 6 months has been increased to all for up to 30 visits.

Last Visit

Any None

< 15 mths

< 30 mths

Date Range

09/02/2011 ▼ to 09/02/2011 ▼

Activity

Active (3x in 2yrs)

Not Active

Visits in last 6 mths

>= 0 ▼

Has Not Visited in last

0 ▼ mths

Postcode Include Exclude

City/Suburb Include Exclude

(lists: comma separated, * wildcard)

Figure 4.1 General Filters tab enhancements





CLINICAL AUDIT TOOL

5 Charts

Issue	Description	Release Notes
8101	Best Practice BSLF results	<p>The BSLF collected from Best Practice will check the pathology results as well as manual entry.</p> <p>Check the Best Practice Mappings document for details.</p>

6 Conditions

Issue	Description	Release Notes
8247	MD Users – Diabetes Type II new codes	<p>New codes have been added to the MD pick list for Diabetes Type II:</p> <p>Diabetes Type II requiring insulin NIDDM - requiring insulin</p> <p>These have been updated in the MD Mappings document.</p>
8312	Heart Failure removed from CVD	<p>Advice from the National Vascular Disease Prevention Alliance is that Heart Failure should not be grouped as part of CVD. They have said "Heart failure does not necessarily involve vascular disease (e.g. can be caused by hypertension) and therefore is not captured by the term."</p> <p>The changes to CAT are: Filters – Heart failure is removed from the CVD group CVD Risk graph – Heart failure patients will not be excluded (their risk will now be calculated) APCC Indicators GEN-009, GEN-011-014 denominator values will change</p>





CLINICAL AUDIT TOOL

7 Medications

* will not be available if the Clinical System extract has not been updated

Issue	Description	Release Notes
7720 *	Dabigatran	<p>A new anticoagulant Dabigatran has been added.</p> <p>The group name has been changed from Anticoagulants to Antithrombotics (Figure 7.1) to be more accurate as it contains:</p> <p>Aniticoagulants - Dabigatran, Warfarin Antiplatelets – Aspirin, Clopidogrel</p>

Medications - Heart		Medications - Respiratory		Medications - Other	
ACE or ARB			Antithrombotics		
<input type="checkbox"/> Yes	<input type="checkbox"/> No	<input type="checkbox"/> Yes	<input type="checkbox"/> No	<input type="checkbox"/> Yes	<input type="checkbox"/> No
<input type="checkbox"/> ACE	<input type="checkbox"/> No	<input type="checkbox"/> Aspirin	<input type="checkbox"/> No	<input type="checkbox"/> Clopidogrel	<input type="checkbox"/> No
<input type="checkbox"/> ARB	<input type="checkbox"/> No	<input type="checkbox"/> Dabigatran	<input type="checkbox"/> No	<input type="checkbox"/> Warfarin	<input type="checkbox"/> No

Figure 7.1 Medications > Antithrombotics filter





CLINICAL AUDIT TOOL

8 Reports

Issue	Description	Release Notes
3767	View Population Report includes Assigned Provider	The Patient Reidentify Report available from the 'View Pop.' Button now includes the name of the Assigned Provider in the last column along with Last Seen date.
7028	Summary Report – add Ethnicity not recorded	<p>The Summary Report card has a new line item for Ethnicity not recorded.</p> <p>The Aggregation Template has been updated to reflect this change and can be downloaded from http://help.pencs.com.au/cat-aggregation-templates.htm</p>
	QAIHC Report – extra columns	<p>The QAIHC Report has had columns added for the total population (All Patients)</p> <p>The Aggregation Template has been updated to reflect this change and can be downloaded from http://help.pencs.com.au/cat-aggregation-templates.htm</p>
	HFL Report	<p>The HFL report has been rewritten and is now available for all CAT users providing their version of the data set is at the minimum level (version 1_6) to support the report.</p> <p>The report can be found under the report tab: Standard Reports > Indicator Sets > Healthy For Life Reports (Figure 8.1).</p> <p>The report is provided in a summary and extended format. A button at the top of the report is used to toggle between the 2 options.</p> <p>A HFL Quick reference Guide will be available from the CAT Help page http://help.pencs.com.au/cat.htm</p>



CLINICAL AUDIT TOOL

<p>Improvement Foundation Reporting</p> <ul style="list-style-type: none"> • APCC Report • QAIHC Report • Healthy for Life 	<p>Reports that can be sent to the Improvement Foundation Portal have been moved under a new tab - Indicator sets (Figure 8.1)</p> <p>The reports under this tab are</p> <ul style="list-style-type: none"> • APCC Report • QAIHC Report • Healthy for Life <p>All these reports can be sent to the Improvement Foundation Portal via the APCC Report 'Prepare Report' button.</p> <p>Refer to the Clinical Audit APCC User Guide for more information.</p>
--	---

The screenshot shows a web application interface with a top navigation bar containing various categories like Demographics, Allergies, Smoking, Alcohol, Measures, Pathology, Disease, Pap Smear, Medications, Diabetes SIP Items, CV Event Risk, HMR, and Immunisation. Below this, there are tabs for Indicator Sets (NPI Report, NT AHKPI Report, Summary Report Card, MH Summary Report Card) and a sub-tab for APCC Report (QAIHC Report, Healthy For Life Reports). A toolbar includes buttons for Prepare Report, View History, Manual Measures, and Prevention Measures. A navigation bar shows '1 of 1' items with navigation icons and a 'Find | Next' search function.

		Count				Percentage	
		Total	ATSI	Non ATSI	NR	Total	A
APCC Report							
	CORONARY HEART DISEASE						
CHD-001	Number of patients on the CHD register	1	0	0	1		
	Patients with CHD whose last recorded BP within the last 12 months was:						
CHD-002	BP <=130/80 mmHg	0	0	0	0	0.00 %	

Figure 8.1 New Reporting tab structure

9 Printing

No changes have been added here.

