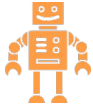


PATCAT BI Schema





Young, energetic, **analytics business**. 40 people currently headquartered in Brisbane, working across Australia's eastern seaboard.



Use a range of cutting edge technology including **Qlik, Tableau & Microsoft. Largest Qlik Partner** across Australia and NZ by active users



We are not IT people, rather Accountants, Maths and Clinical professionals that use **IT to achieve an objective**



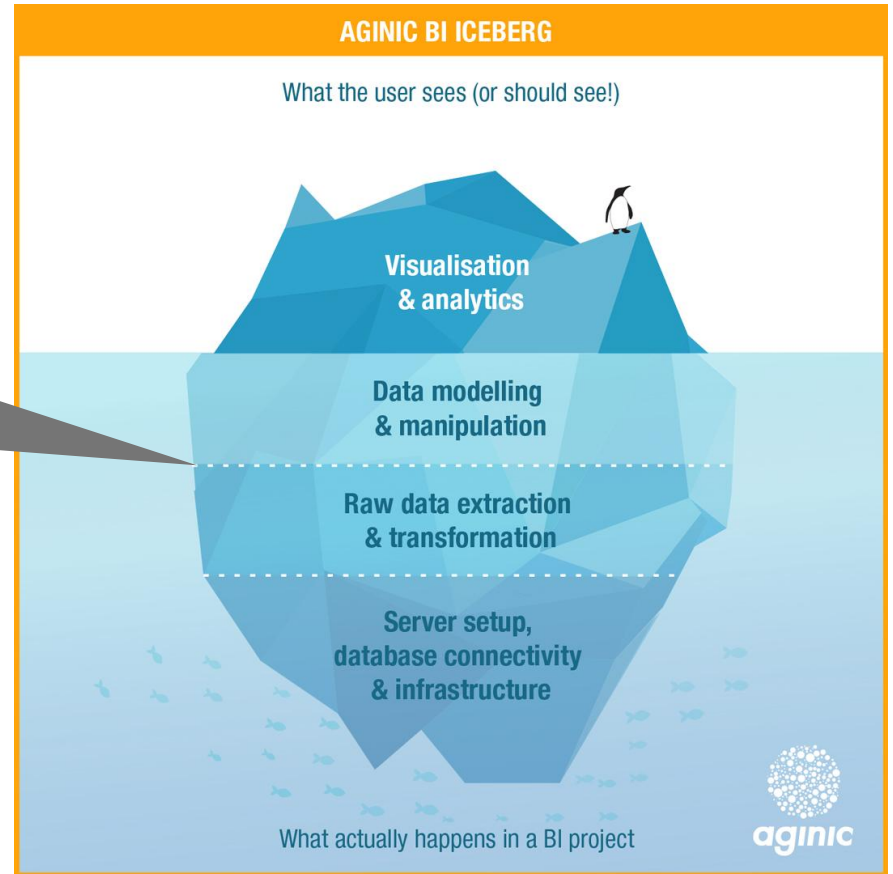
Do things differently. Deliver using an Agile approach, we get things done quickly with a focus on delivering accessible analytics solutions that are intuitive and require little or no training to consume and action. We deliver using a 'shadowing' model that ensures appropriate knowledge transfer and upskilling of our clients internal staff.



- **Luke Moloney**
Manager at Aginic
- Worked with a range of PHNs using BI tools to improve performance measurement / analyse PATCAT.
- Previously worked with CAT Plus and Qlik at Brisbane South PHN.
(See PenCS for a copy of my conference presentation)



This is what has changed. The database is now much, much more granular.





The cool stuff...Demo

N.B. This data is demo data.

- Continue to make enhancements
- Expand the current data sets
- Initial PHN deployments will involve additional co-design



Get in contact

Luke Moloney
0473 735 593
luke.moloney@aginic.com