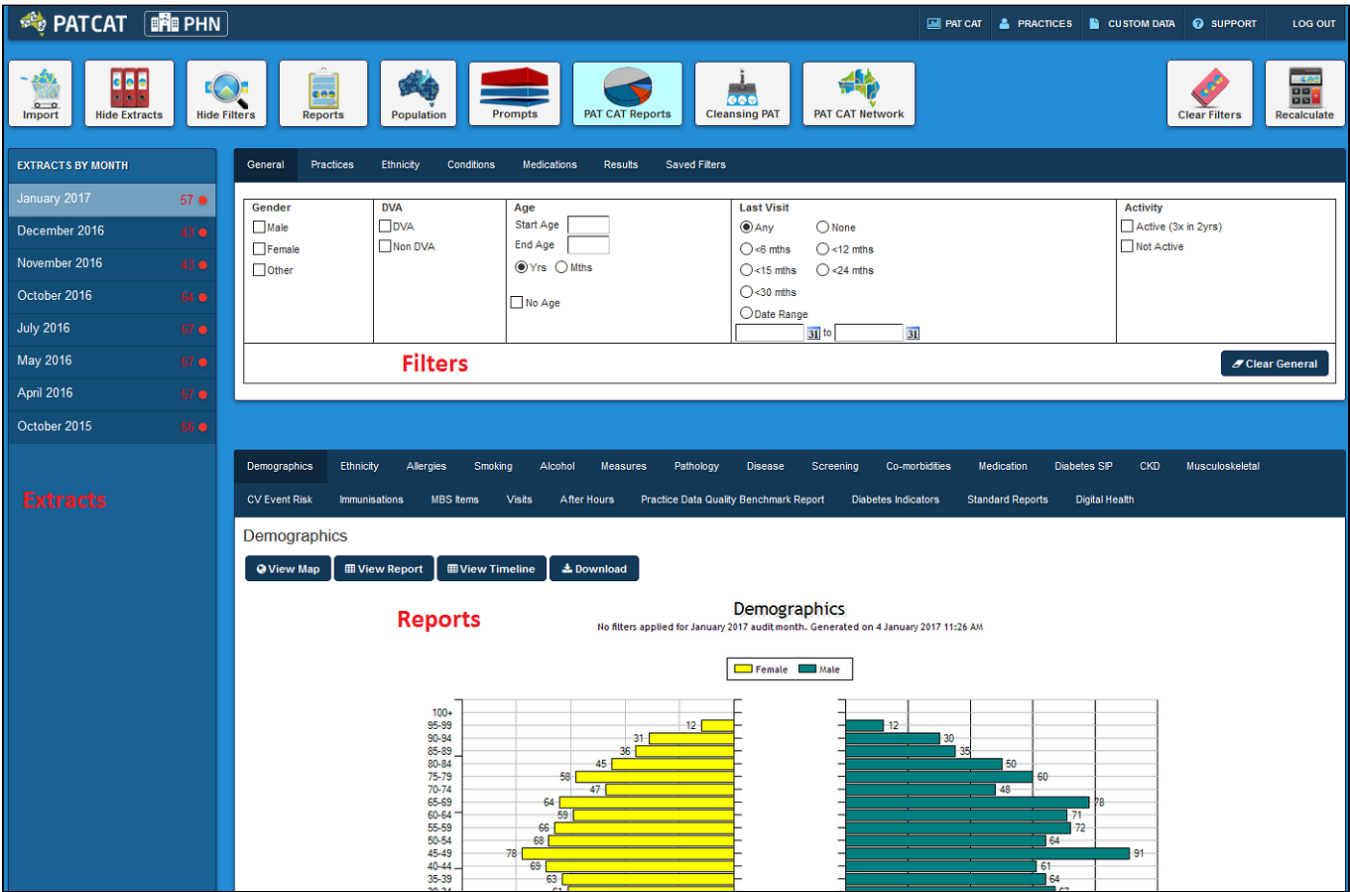


# THE PAT CAT USER INTERFACE

The user interface is divided into 3 sections

- Data **Extracts** collected for analysis (Left Hand Panel)
- Data **Filters** (Top Right Panel)
- Data **Reports** (Bottom Right Panel)

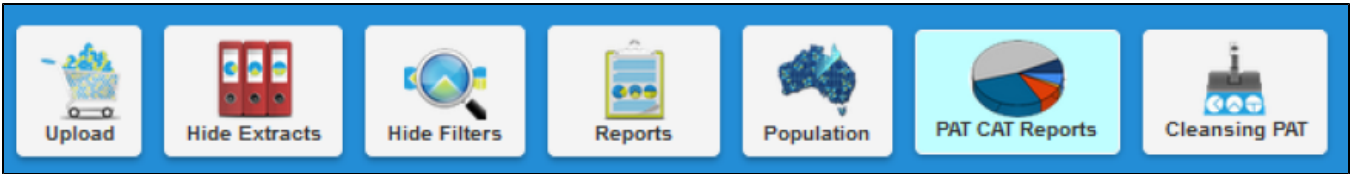


When a month is listed under **EXTRACTS BY MONTH** in the **Extracts** panel, it means that extracts have been loaded during that month from at least one practice registered within the system. Where the listed month is followed by a green dot, it means that all registered practices have an extract loaded for the month; a red dot means that only some of the registered practices have an extract loaded for the month.

**The red number next to a red dot indicates the number of practices that have uploaded in that month.**

**NOTE:** Individual practice extracts are not listed in the extracts pane, however data from a single practice may be analysed by selecting a month in the Extract pane and filtering by a specific practice. See the section on filtering for details: [Practices Filtering](#)

Click the **View/Hide Extracts** and the **View/Hide Filters** buttons to toggle between displaying and hiding the associated panels in user interface.



It is often handy to hide the data collection (Extracts) and data filter (Filters) areas of the screen in order to make best use of your screen space to view the data results (Reports). You can toggle between the View/Hide modes at any time.