

# APCC (Australia Primary Care Collaboratives) Report

The APCC Report is available under the 'Standard Reports > Indicator Sets' tab.

The APCC Report is always derived from your full data set not your filtered data set. It will always show the practice total number for your registers Diabetes, CHD, COPD, CKD and CVD patients. This report provides you with summary statistics for these patients.

**This report cannot be filtered by date. It is applicable only to the date at which the data collection was extracted. The date of extract will appear on the report.**

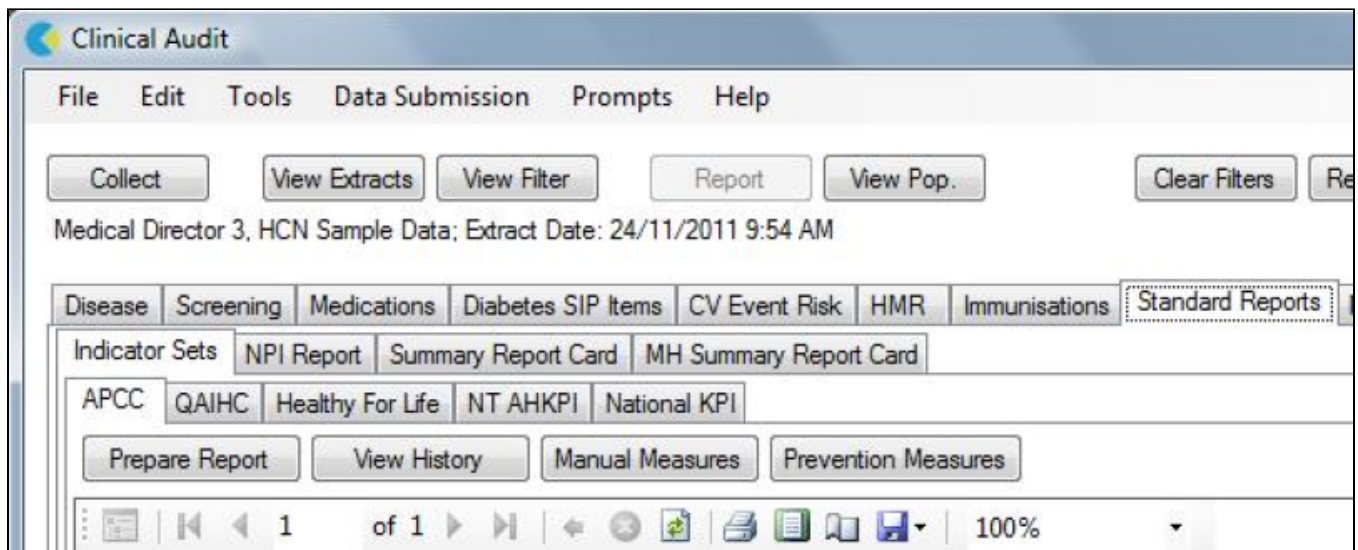
The reason is because CAT4 collects a 'snapshot' of a patient's current results at the date of extract. It does not collect a full patient history and hence it is not possible to create an APCC report retrospectively.

The report shows a breakdown of patients by ATSI, Non ATSI and Not Recorded.

<div> Demographics Allergies Smoking Alcohol Measures Pathology Disease Pap Smear Medications Diabetes SIP Items CV Event Risk HMR Immunisations Standard Reports </div>									
<div> Indicator Sets NPI Report Summary Report Card MH Summary Report Card </div>									
<div> APCC Report QAIHC Report Healthy For Life Reports </div>									
<div> Prepare Report View History Manual Measures Prevention Measures </div>									
<div> 1 of 1 Find   Next </div>									
APCC Report									
		Count				Percentage			
	CORONARY HEART DISEASE	Total	ATSI	Non ATSI	NR	Total	ATSI	Non ATSI	NR
CHD-001	Number of patients on the CHD register	134	0	69	65				
	Patients with CHD whose last recorded BP within the last 12 months was:								
CHD-002	BP <=130/80 mmHg	75	0	44	31	55.97 %		63.77 %	47.69 %
CHD-003	BP Recorded	111	0	65	46	82.84 %		94.20 %	70.77 %
CHD-004	Patients with CHD who are currently prescribed an Antiplatelet Medication	91	0	48	43	67.91 %		69.57 %	66.15 %
CHD-005	Patients with CHD who are currently prescribed a Statin Medication	101	0	54	47	75.37 %		78.26 %	72.31 %
	Patients with CHD whose last recorded LDL/Cholesterol within the last 12 months was:								
CHD-006	LDL <= 2mmol/l or if no LDL, Cholesterol < 4mmol/l	3	0	2	1	2.24 %		2.90 %	1.54 %
CHD-007	Cholesterol Recorded	4	0	2	2	2.99 %		2.90 %	3.08 %
CHD-008	Patients with CHD who are currently prescribed an ACE or ARB Medication	85	0	44	41	63.43 %		63.77 %	63.08 %
	Patients with CHD whose Smoking status is:								
CHD-009	Non Smoker (i and ii)	80	0	47	33	59.70 %		68.12 %	50.77 %
CHD-010	i) Never Smoked	29	0	13	16	21.64 %		18.84 %	24.62 %
CHD-011	ii) Ex Smoker	51	0	34	17	38.06 %		49.28 %	26.15 %
CHD-012	iii) Current Smoker	14	0	3	11	10.45 %		4.35 %	16.92 %
CHD-013	iv) Not Recorded	40	0	19	21	29.85 %		27.54 %	32.31 %

## APCC participating practices

The APCC Report functionality is available from a set of menu options contained at the top of the APCC Report tab. A report toolbar is available which provides functions to view, print and export the document.



The 'APCC' Report menu options are:

- Prepare Report – this option has been replaced by the Data Submission main menu option which will guide the user through the data transmission process
- View History – allows the user to view a list of previous reports that have been submitted
- Manual Measures – a data entry screen for the manual measures
- Prevention Measure – a data entry screen for the prevention measures that are not collected