

Reference Appendix Communicare Custom Fields Mapping

Mapping to System Codes

This Appendix explains how to map custom fields back to standard Communicare fields so they can be extracted by CAT. This process makes use of Communicare system codes. Some data items do not currently have system codes. These may be reviewed and added in a future release.

Example: We have a custom qualifier called *Waist Measurement* and we want to link it the standard Communicare qualifier called *Waist Circumference* so it will be collected by the CAT extractor. The system code mapping for waist listed in this document is **WCM**.

To link a custom qualifier to a standard Communicare qualifier follow the steps below:

Step 1: Locate the standard Communicare qualifier you want to link to and write down the value of the following fields: *System Code*, *Value Type* and *Units*

- The Qualifier Type Maintenance screen is accessed from the File > Reference Tables > Qualifier Types menu option (Figure 1) or by pressing Ctrl+Alt+Q shortcut key combination.

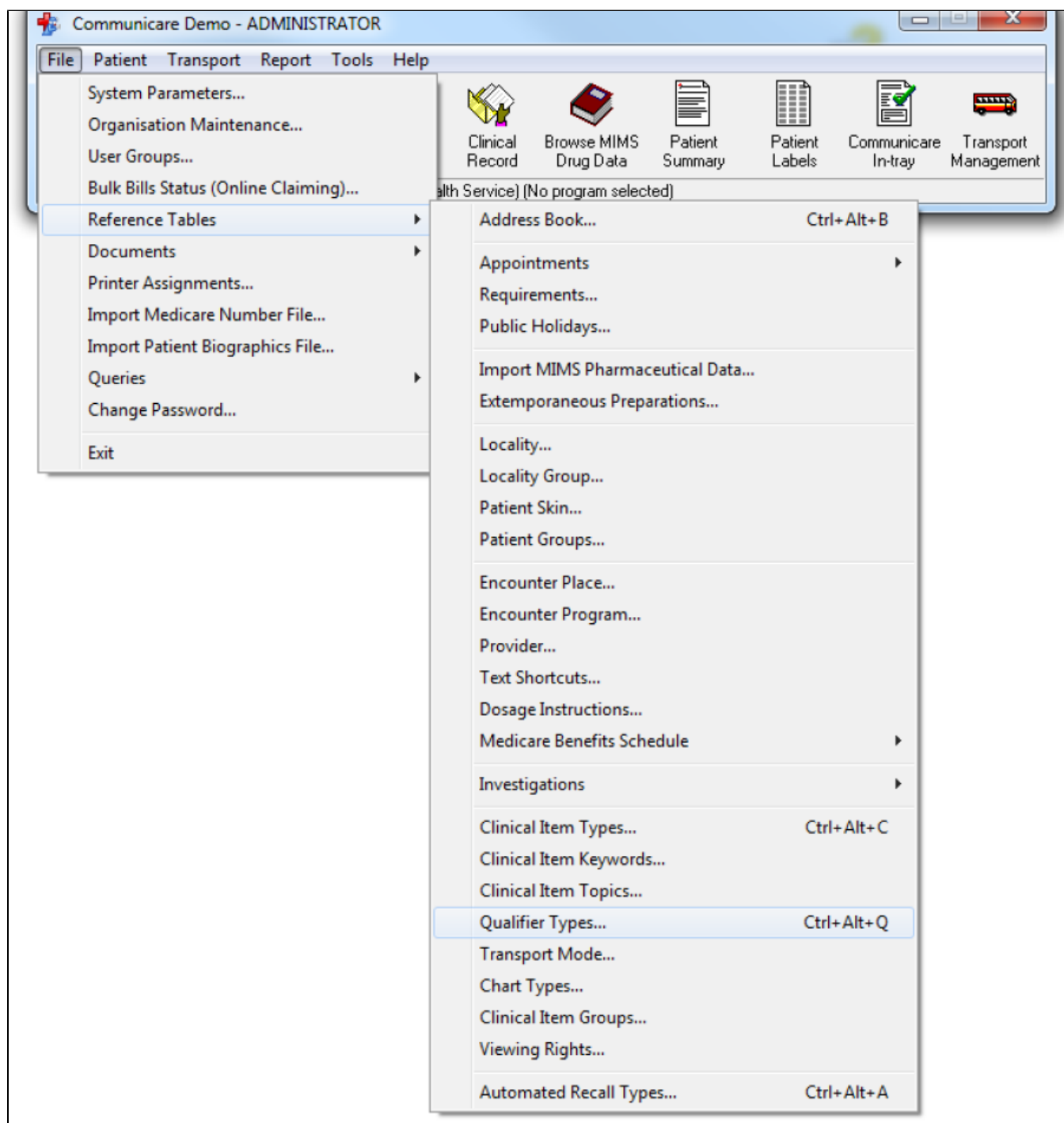


Figure 1: Qualifier Types option

Locate *Waist Circumference* in the list by typing the first few letters

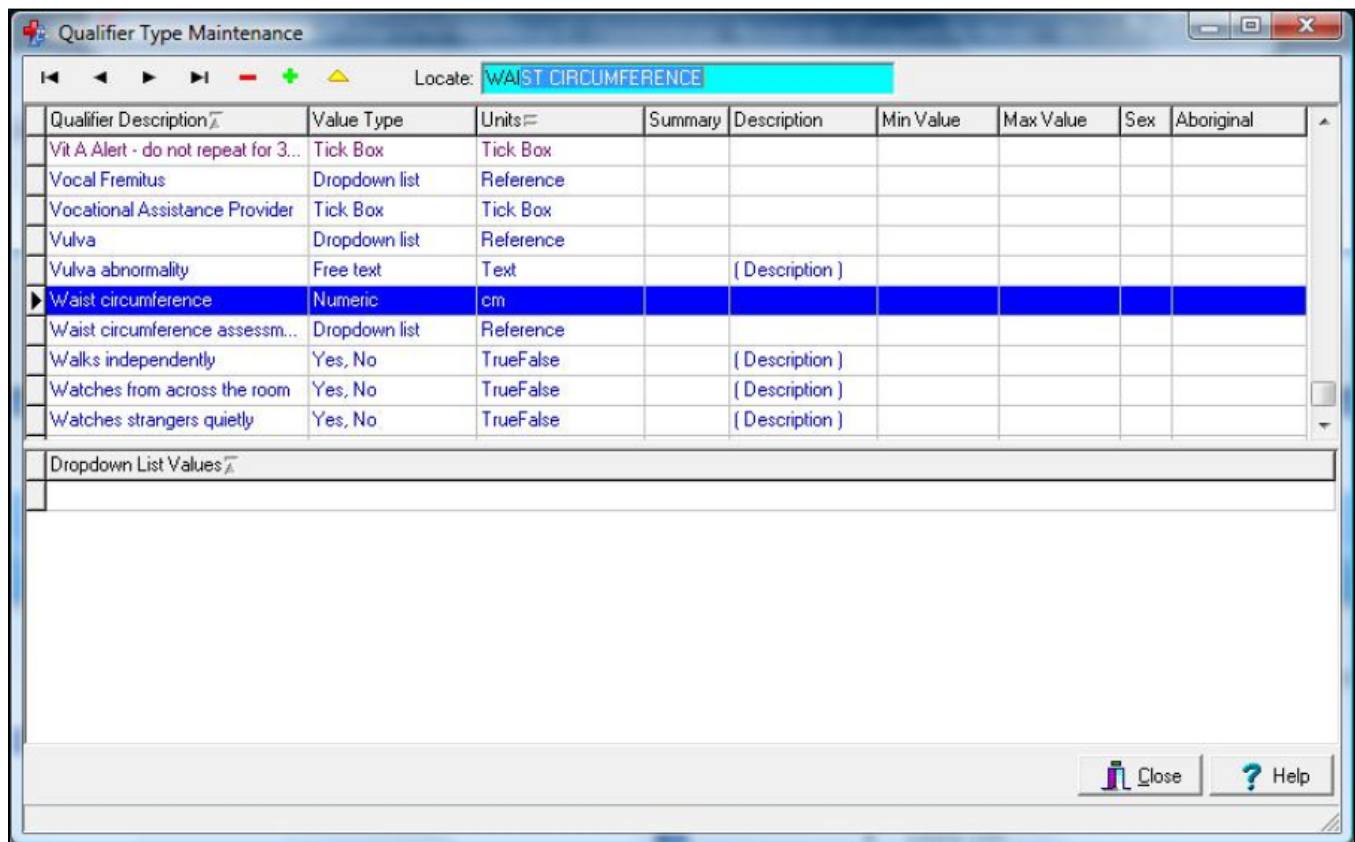


Figure 2: Qualifier Type Maintenance screen

Right click in the screen to bring up the option 'Show Hidden Columns' (Figure 3) – click this option

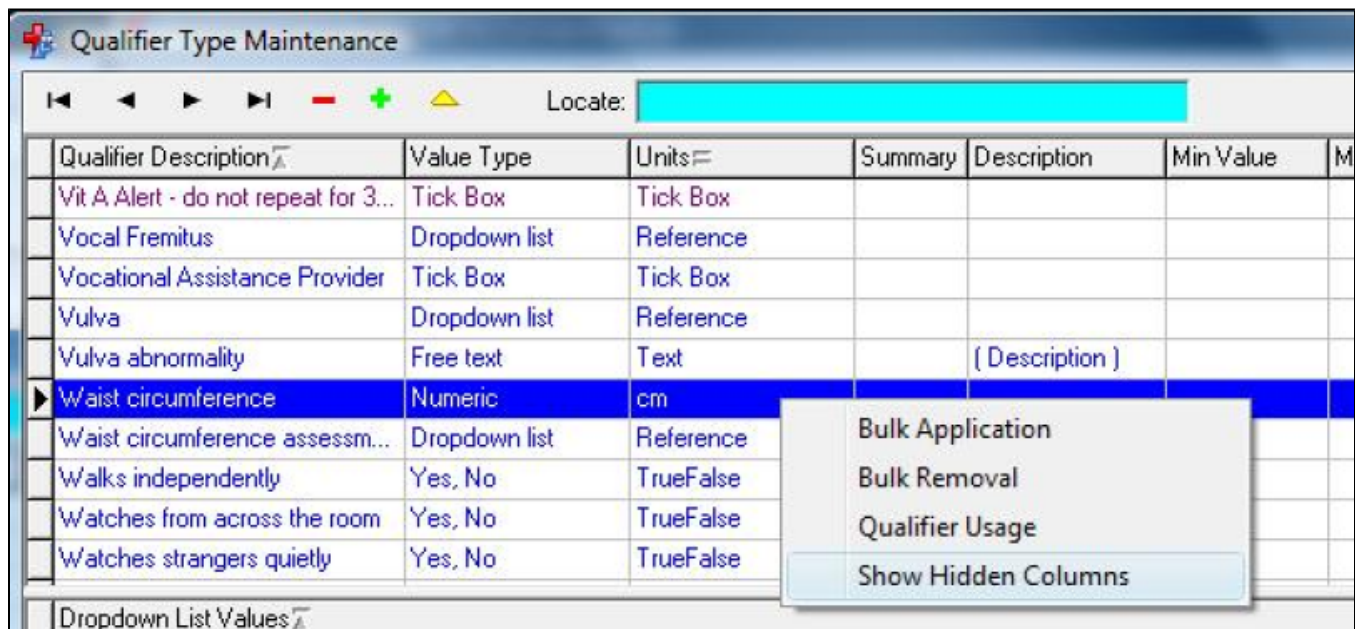


Figure 3: Show Hidden Columns option

Write down the following values from the extended fields view (Figure 4)

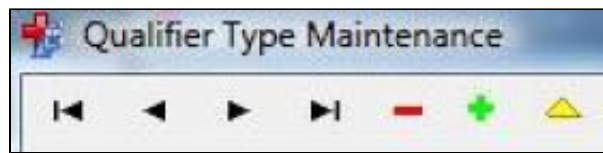
- System Code: WCM
- Value Type: Numeric

- Units: cm

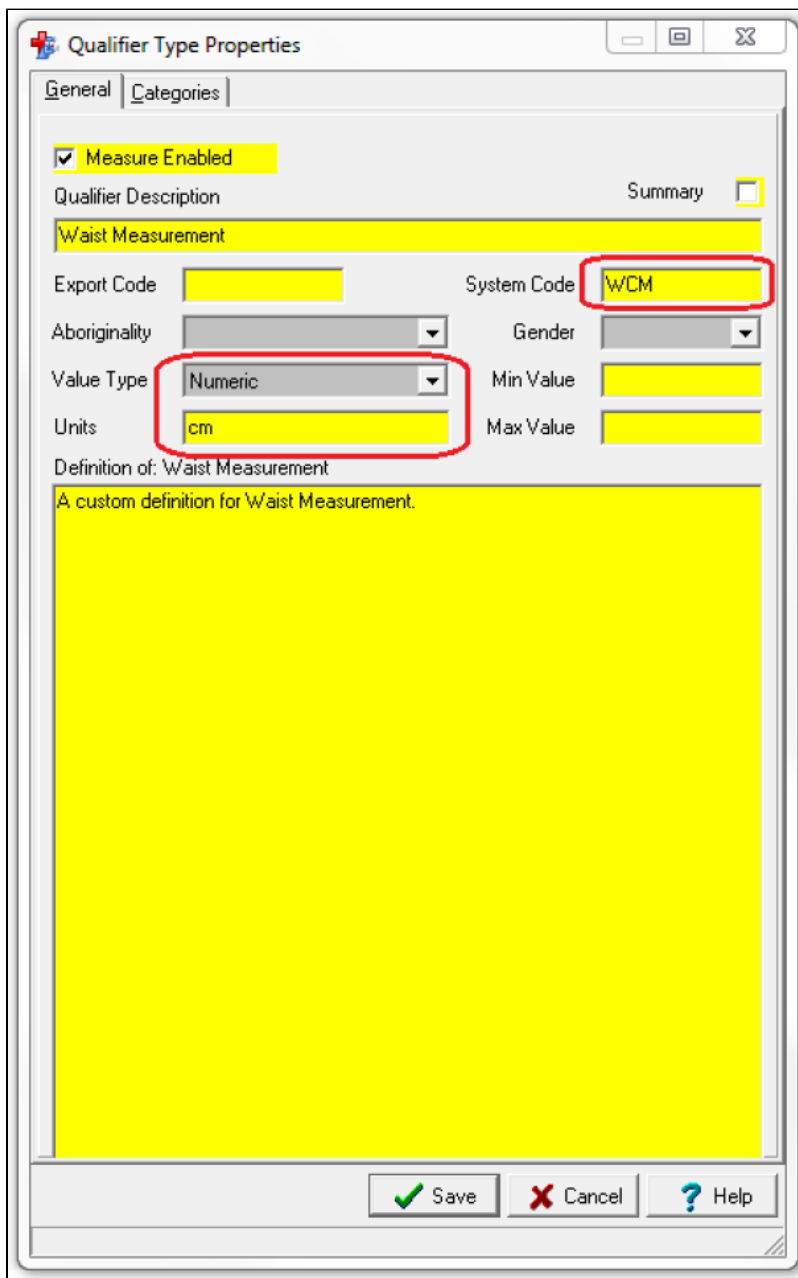
1000001153	Vocational Assi...	Tick Box	Tick Box				
1000000912	Vulva	Dropdown list	Reference				
1000000911	Vulva abnormal...	Free text	Text			(Description)	
1000001767	Waist circumfe...	Numeric	cm	WCM			
1000000035	Waist circumfe...	Dropdown list	Reference				
1000001009	Walks indepen...	Yes, No	TrueFalse			(Description)	
1000001026	Watches from ...	Yes, No	TrueFalse			(Description)	

Figure 4: Qualifier Type Maintenance screen with extended columns

Step 2: From the 'Qualifier Type Maintenance' screen locate the custom qualifier you want to link, e.g. 'Waist Measurement', use the tool bar to add or edit the qualifier.



Add the appropriate System Code and ensure that the Value Type is the same (Figure 5). Using another value type may give you unpredictable results. Click Save



The image shows a 'Qualifier Type Properties' dialog box with two tabs: 'General' and 'Categories'. The 'General' tab is active. It contains the following fields and controls:

- Measure Enabled:** A checked checkbox.
- Qualifier Description:** A text field containing 'Waist Measurement'.
- Summary:** An unchecked checkbox.
- Export Code:** An empty text field.
- System Code:** A text field containing 'WCM'.
- Aboriginality:** A dropdown menu.
- Gender:** A dropdown menu.
- Value Type:** A dropdown menu showing 'Numeric'.
- Min Value:** An empty text field.
- Units:** A text field containing 'cm'.
- Max Value:** An empty text field.
- Definition of: Waist Measurement:** A large text area containing 'A custom definition for Waist Measurement.'

At the bottom of the dialog are three buttons: 'Save' (with a green checkmark icon), 'Cancel' (with a red X icon), and 'Help' (with a blue question mark icon).

Figure 5: Edit a custom qualifier

Further Information:

The main functionalities of the Qualifier Type Maintenance window are described in the Communicare help file under *System Administration | Reference Tables | Qualifier Types* topic.