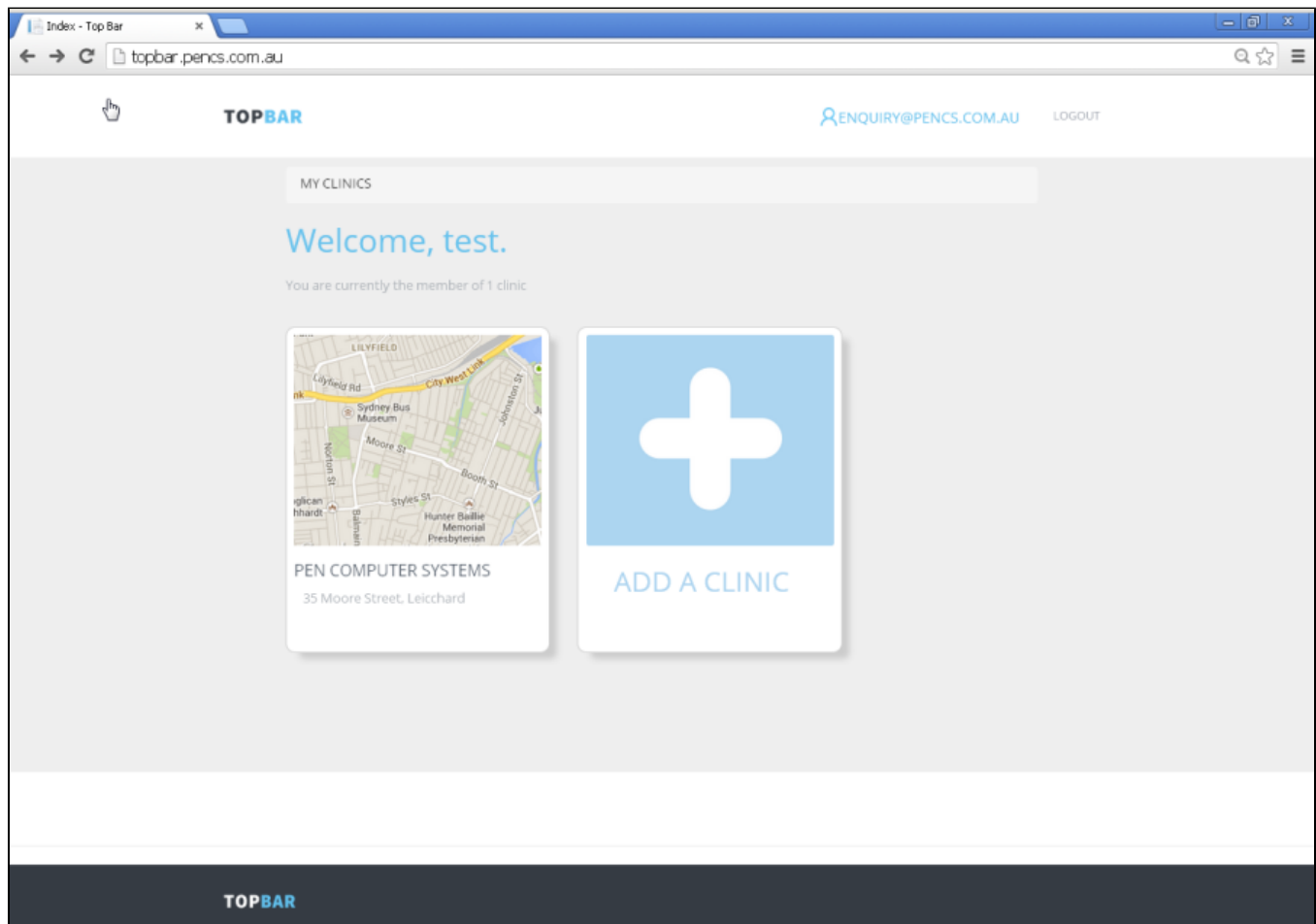
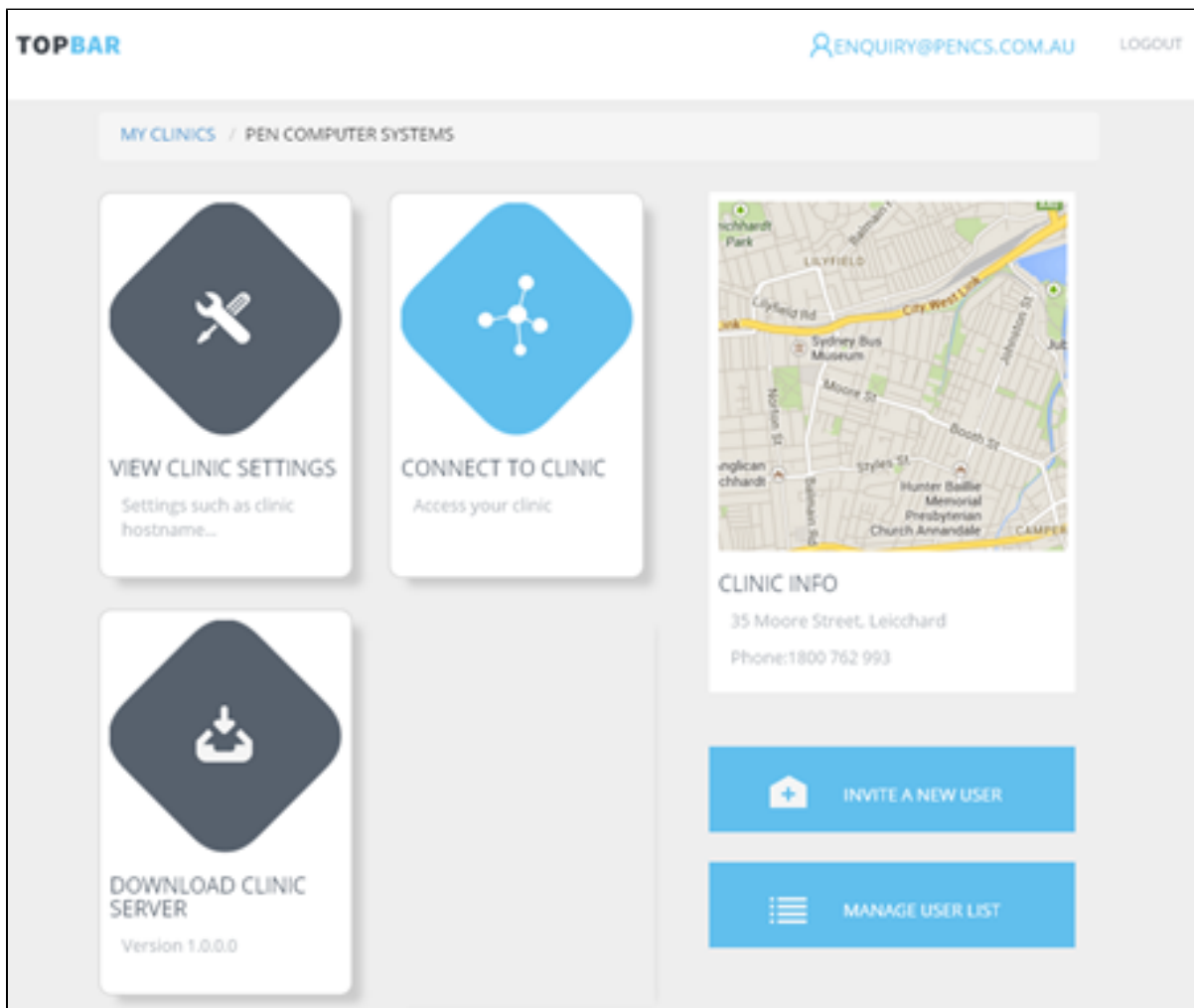


Server Installation Steps

Go to <https://topbar-users.pencs.com.au> and log in using the username and password provided by Pen CS. Then click on the clinic you are installing Topbar for

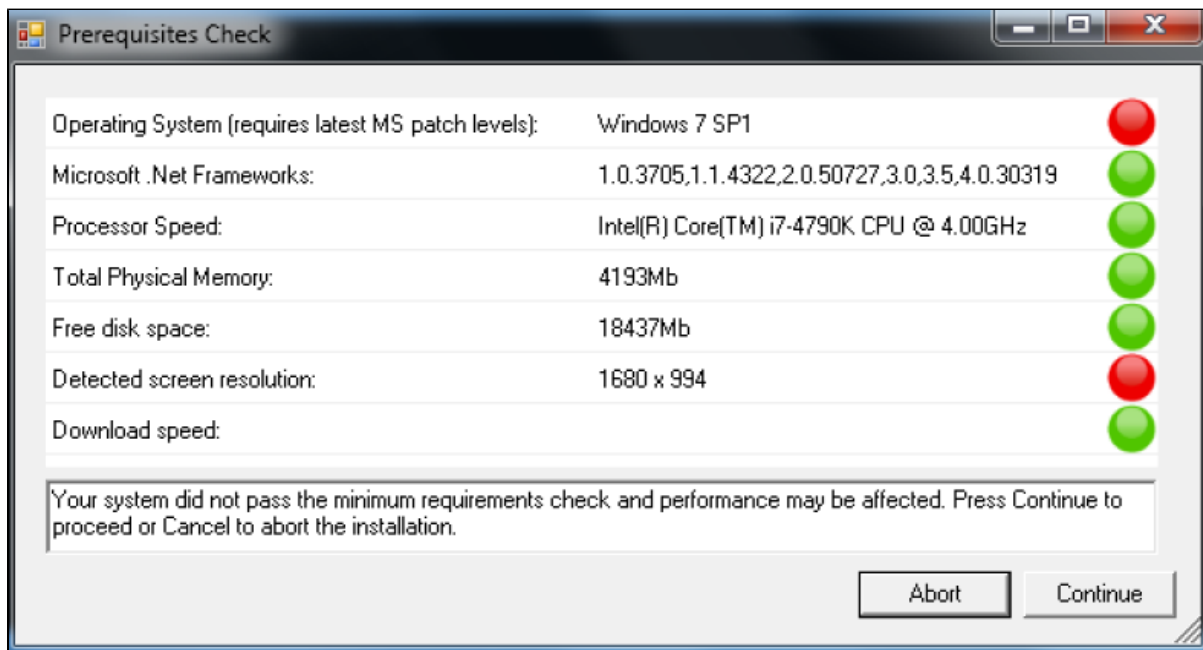


Click on the 'Download Clinic Server' link – File download will be triggered

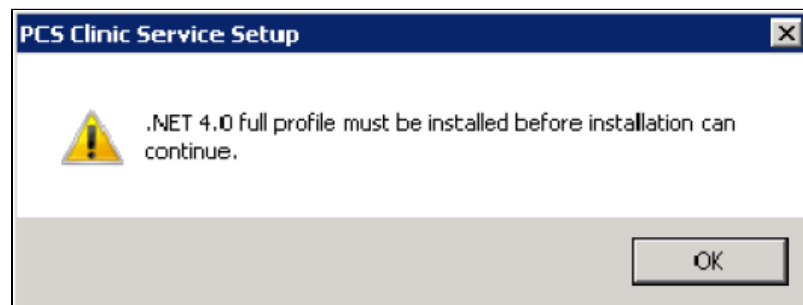


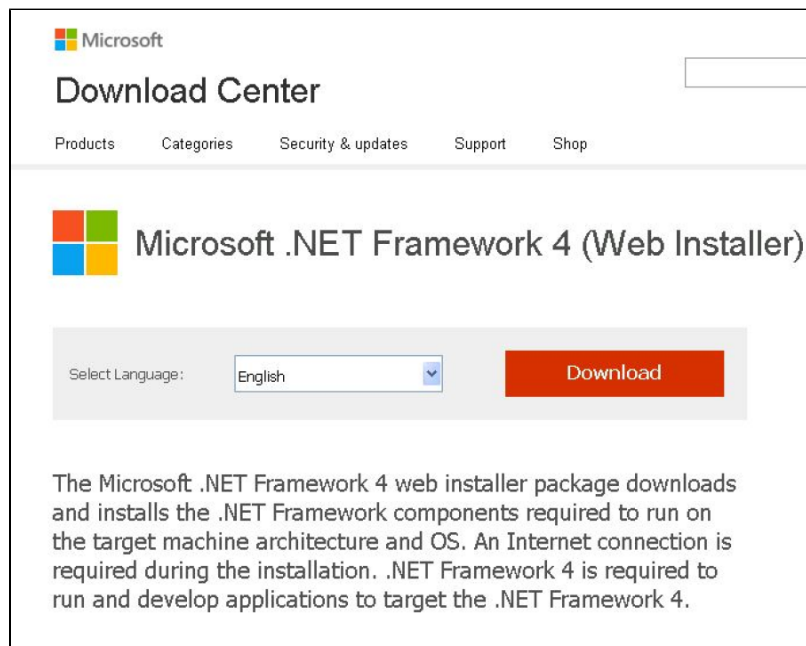
Run the downloaded installer – 'ClinicServiceSetupx.x.x.exe'

This will do a pre-requisite check and show if all requisites are met. Please note that the download test takes a little time, during this time you will not be able to continue with the installation. Even if the pre-requisite check is not 100% passed you can still install. If unsure please contact PEN CS support to confirm.

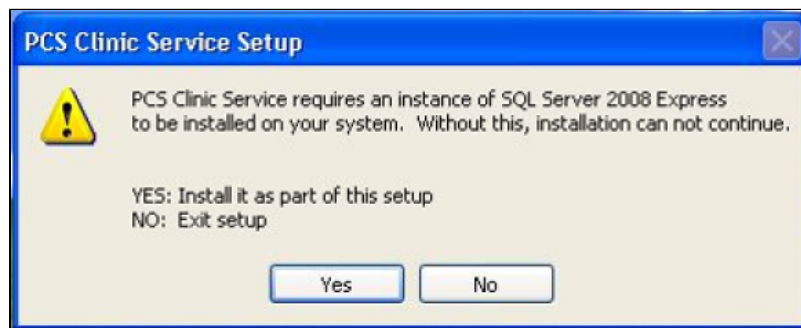


The installer may prompt you to install .net 4.0 full profile – the prompt will come up and once you click on 'OK' your browser will open the Microsoft website for the .net 4 full profile installer. Otherwise proceed to step 7.

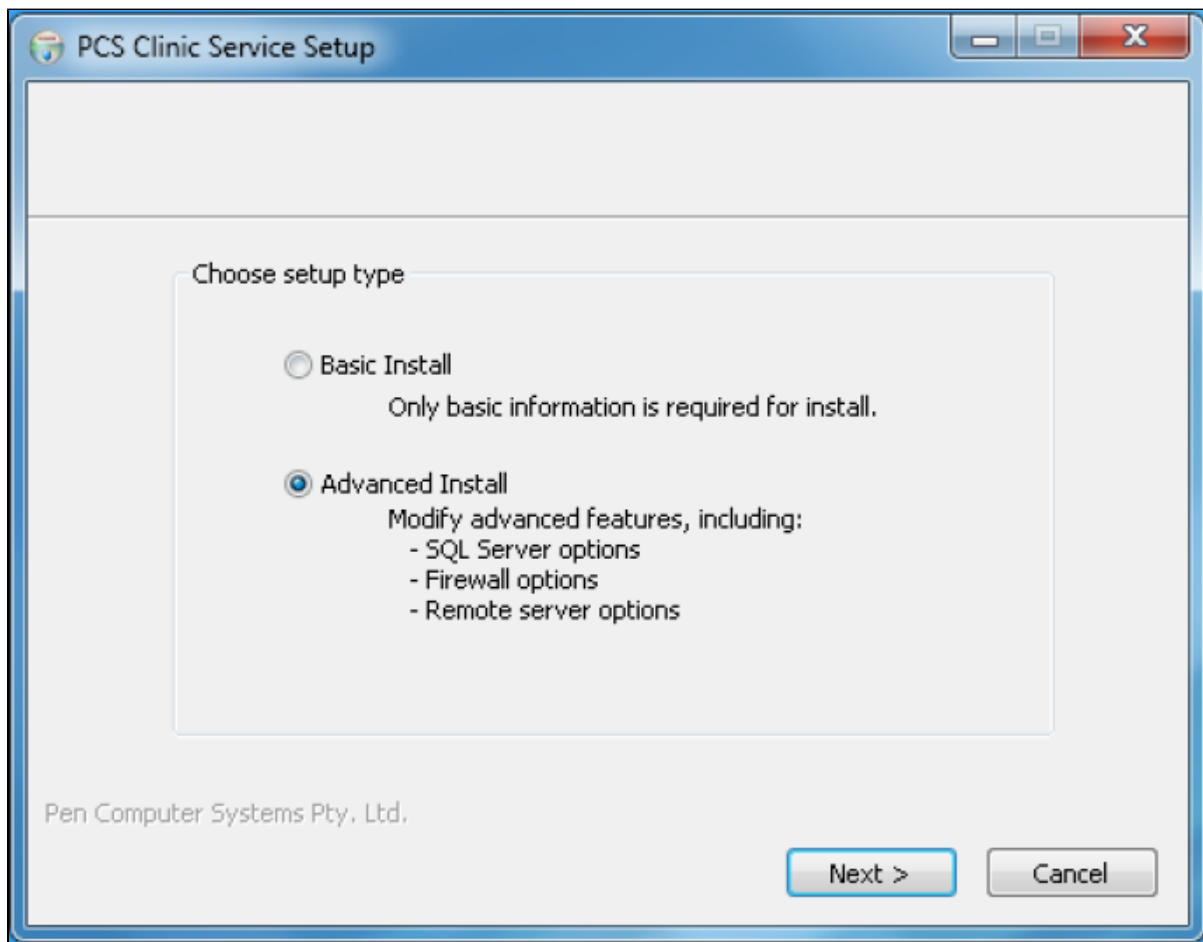




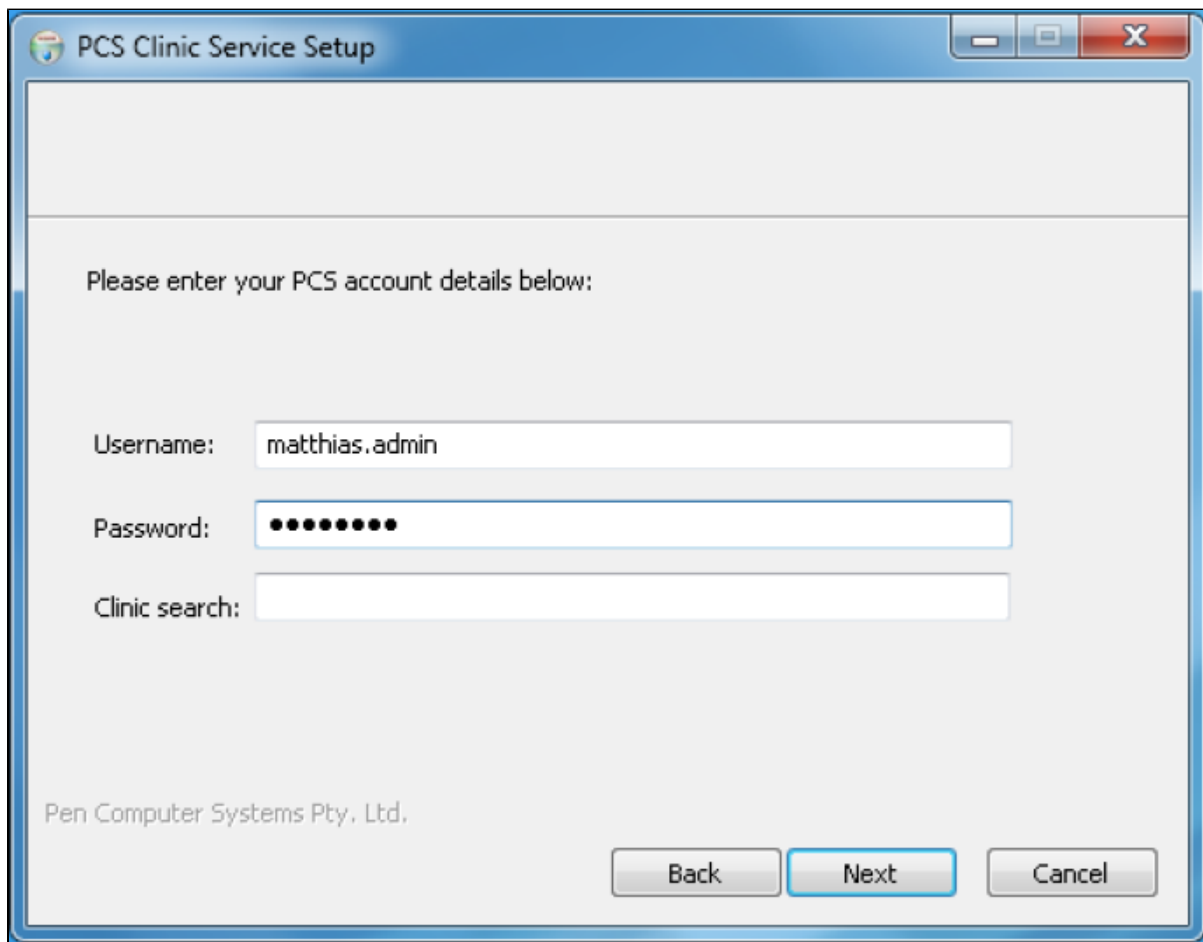
1. Follow the prompts to install .net 4 – this will take up to 15 minutes depending on internet and computer speed
2. If you had to install .net 4.0 Full Profile as described in steps 4 and 5 you will have to start the installer again from where you have downloaded it in the first steps. If .net 4.0 was already installed, please see step 7
3. The installer will prompt you to install SQL Server 2008 R2 – click on Yes to continue. It will only prompt to install a new SQL server instance for Topbar if it was not installed in the past.



By default basic install option is selected – if you select basic the installation will be done in silent, non-interactive mode with default settings. In this manual we show the advanced mode where you can adjust settings.



Enter your Topbar username and password and leave the "Clinic Search" field blank as this is used for non-standard installations only.



The image shows a Windows-style application window titled "PCS Clinic Service Setup". The window has a blue title bar with standard minimize, maximize, and close buttons. The main content area is light gray and contains the following elements:

- A header section with a small icon and the text "PCS Clinic Service Setup".
- A horizontal separator line.
- A prompt: "Please enter your PCS account details below:".
- Three input fields:
 - "Username:" with the text "matthias.admin" entered.
 - "Password:" with ten black dots representing a masked password.
 - "Clinic search:" which is currently empty.
- A footer section containing the text "Pen Computer Systems Pty. Ltd." on the left and three buttons ("Back", "Next", "Cancel") on the right. The "Next" button is highlighted with a blue border.

Select the clinic you are installing to and the clinical and billing system used – leave the installation folder and clinic service port default settings unless otherwise advised by Pen CS. Click on 'Next' to continue the installation

PCS Clinic Service Setup

Clinic/Practice Name: Matthias

Clinical System: Medical Director

Practice Management: Prac Soft

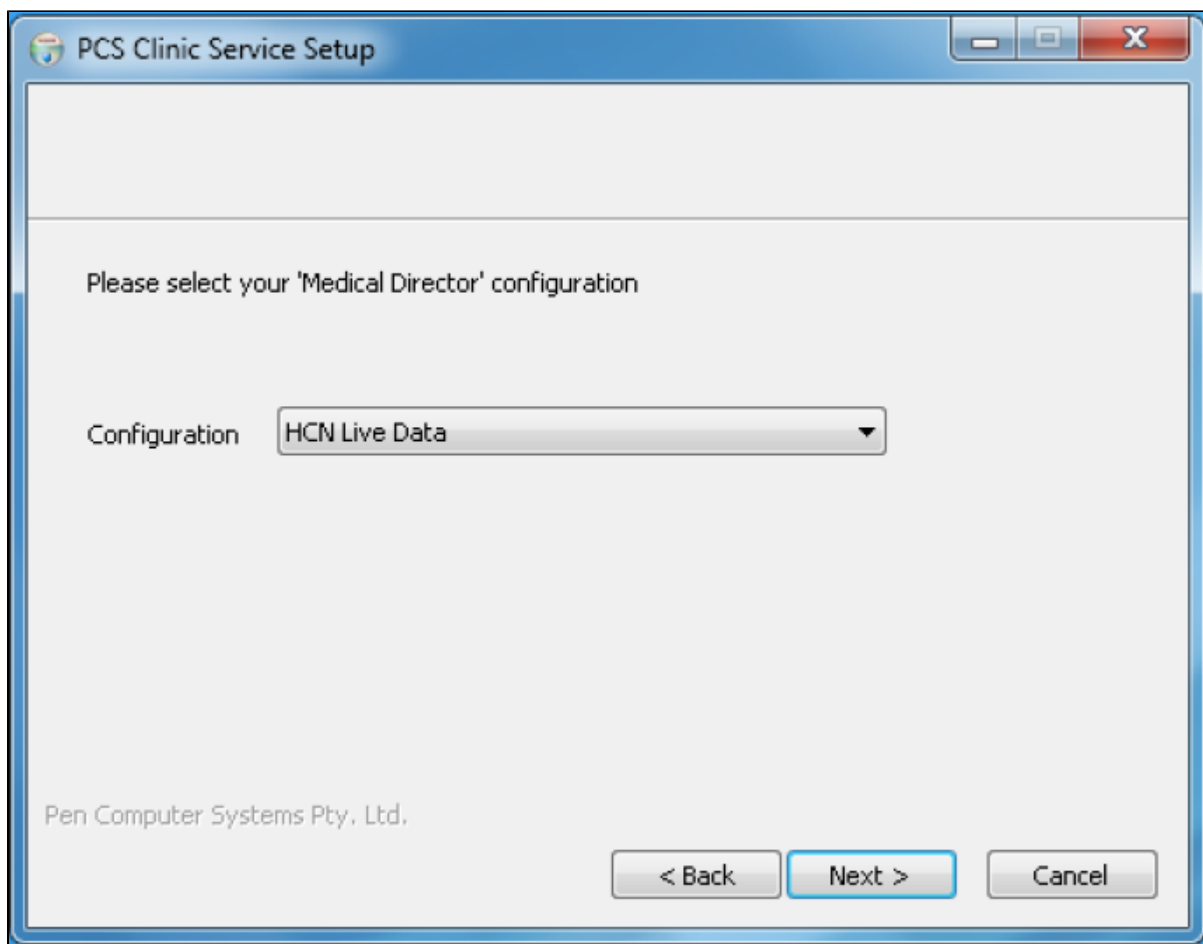
Installation Folder: C:\Program Files (x86)\PCS\PCS Clinical Service

Clinic Service: 8086

Pen Computer Systems Pty, Ltd.

< Back Next > Cancel

Please choose your clinical database – for installation at a clinic for normal use this should be the live database of your clinical system



In most cases leave the default for your SQL Server account on 'Network Service', then click on 'Next' to continue. If server is used as "domain controller" you will have to switch to "Local System" ([https://msdn.microsoft.com/en-us/library/ms143506\(v=sql.105\).aspx#DC_Support](https://msdn.microsoft.com/en-us/library/ms143506(v=sql.105).aspx#DC_Support))

PCS Clinic Service Setup

SQL Server account:

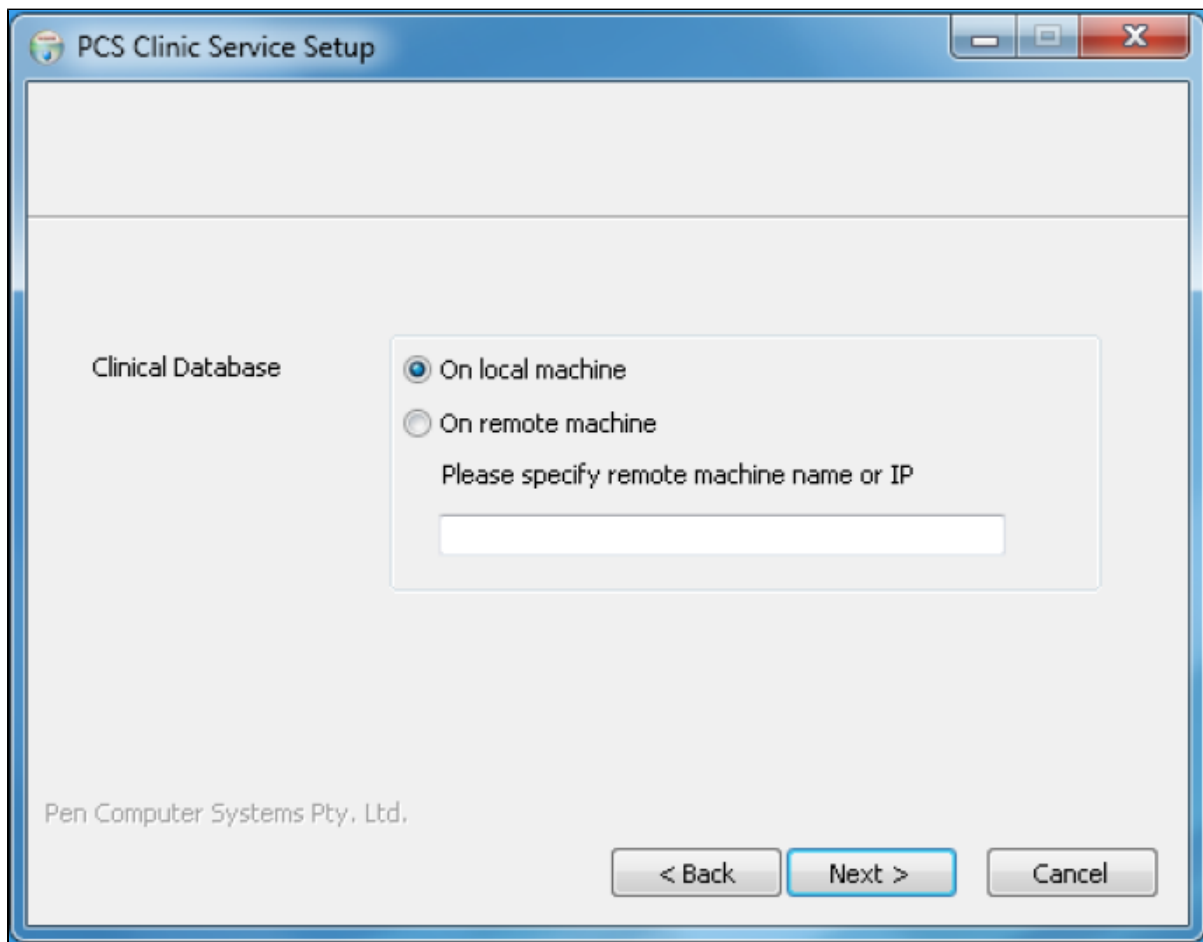
☐ Not Required ☒ Network Service ☐ Local System

140%

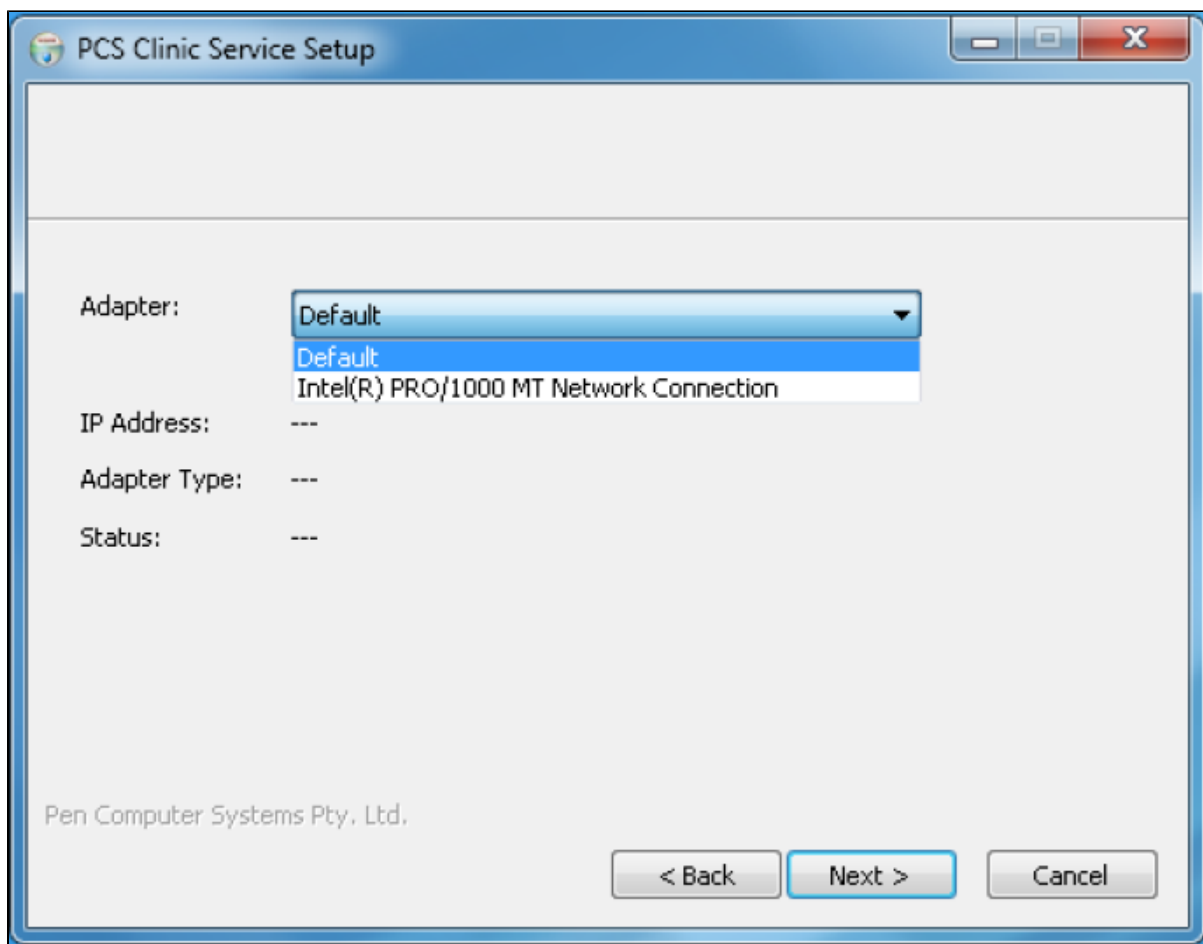
Pen Computer Systems Pty. Ltd.

< Back Next > Cancel

We recommend to install the Topbar server on the same machine as your SQL server, but if this is not possible then the next screen provides an option to change the location of your clinical database. Please enter the remote machine name or IP address **ONLY** if your clinical database is on a different machine from the one you are installing Topbar!



You can choose the correct network adapter if you have more than one active adapter (that includes virtual adapters too). If only one network is present the default setting should be used.



The next screen shows all details entered and allows you to go back to change the configuration if needed. If all information is entered correctly, click on 'Install' to start the installation.

PCS Clinic Service Setup

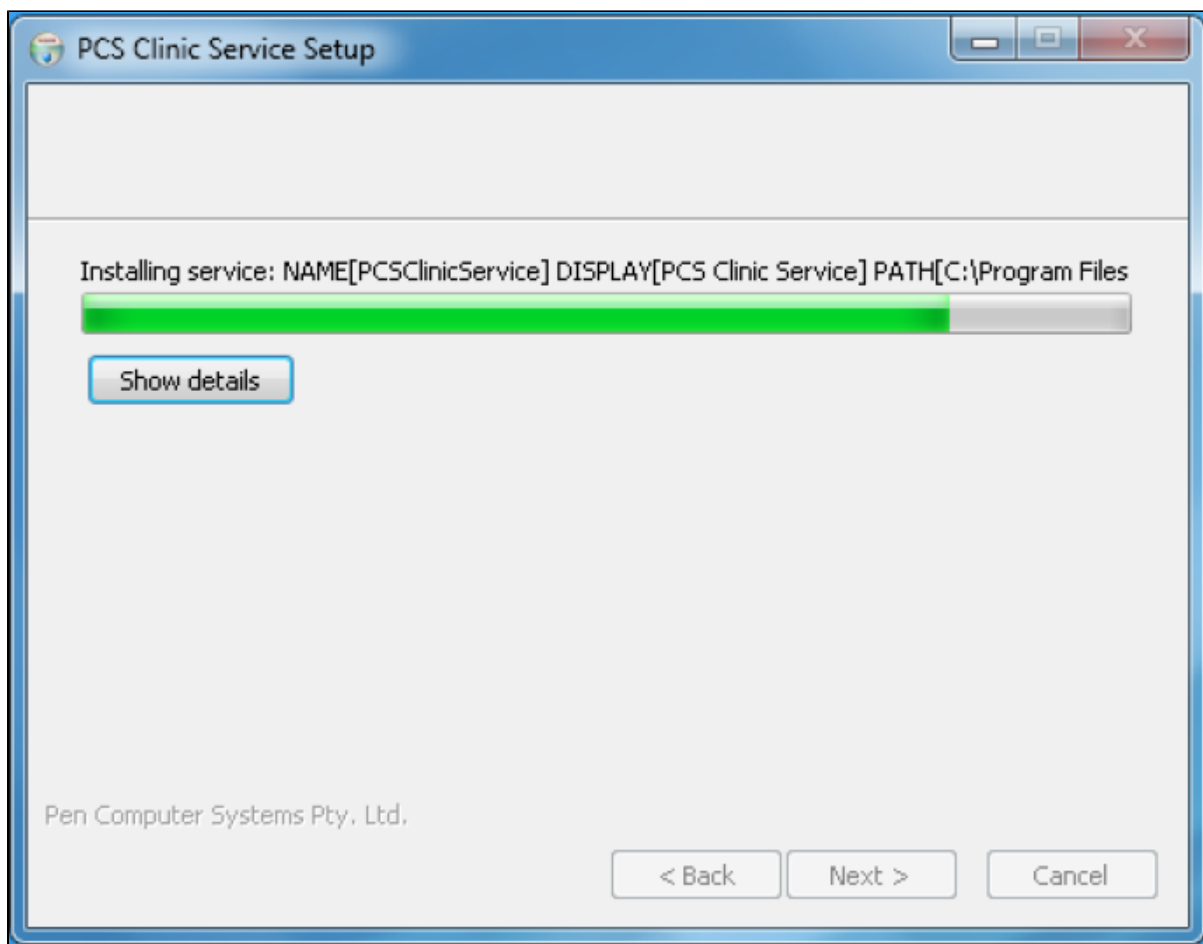
Please confirm your installation settings below:

Clinic/Practice Name:	Matthias
Address:	10000000 Long Long Street Little Suburb New South Wale:
Clinical System:	MedicalDirector
CS Configuration:	HCN Live Data
Practice Management:	Pracsoft
PM Configuration:	HCN Live Data
Clinic Server Port:	8086
SQL Server install	Not Required
Clinical Database Location:	Local Machine

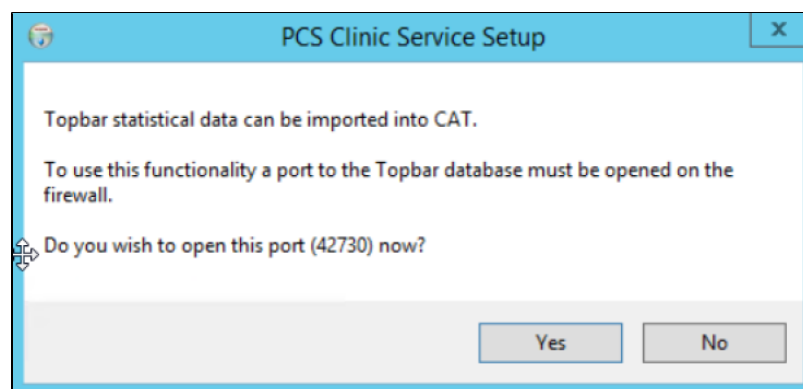
Pen Computer Systems Pty. Ltd.

< Back Install Cancel

The installation will run several components, all is done automatically and will take approximately 15-20 minutes depending on machine and internet performance. Different progress bars for the individual components will show the status of the installation.



At the end of the installation the installer will prompt for linking Topbar to our Clinical Audit Tool (CAT). This requires a port on Topbar SQL server instance to be opened to allow the two programs to communicate. Please allow this port to open for future functionality.



The installation is complete.

