

PCS Clinical Audit Tool – User Guide

Version 2.12

APPENDIX A2

APPENDICES F

PRACTIX DATA COLLECTION

PRACTIX DATA MAPPINGS

Company Contacts

Sydney (Head Office)

Pen Computer Systems
Level 6, The Barrington
10-14 Smith St
PARRAMATTA NSW 2150

Phone: +61 2 9635 8955
Fax: +61 2 9635 8966
Email: enquiries@pencs.com.au
Web: www.pencs.com.au

Melbourne Office

Pen Computer Systems
Level 5
434 St Kilda Rd
MELBOURNE VIC 3004

Phone: +61 3 9866 8477
Fax: +61 3 9866 5699

Document Contact

Contact: **Christine Chidgey**

Phone: +61 3 9866 8477

Email: christine.chidgey@pencs.com.au

Document Control

Version	Date	Modified By	Description
2.9.2	27/07/2010	Christine Chidgey	Initial document
2.9.2.1	11/08/2010	Christine Chidgey	Update some conditions following review Add information for immunisations
2.9.3	18/08/2010	Christine Chidgey	Updates following practiX review
2.10	06/09/2010	Christine Chidgey	Add Asthma medications
2.11	27/10/10	Christine Chidgey	Rename Gardasil Immunisation to HPV Add Pathology Results information Add Conditions - STIs - Chlamydia Add note that eye and foot exam are not currently collected
2.12	27/07/2011	Christine Chidgey	Include practiX Data Collection instructions in this document (Appendix A2)

Contents

COMPANY CONTACTS	2
<i>Sydney (Head Office)</i>	2
<i>Melbourne Office</i>	2
DOCUMENT CONTACT	2
DOCUMENT CONTROL	3
CONTENTS	4
INTRODUCTION	5
CLINICAL AUDIT TOOL (CAT)	5
USER GUIDE	5
PATHOLOGY RESULTS	5
APPENDIX A2 – PRACTIX DATA COLLECTION	6
APPENDIX F – PRACTIX DATA CATEGORY MAPPINGS	8
APPENDIX F-1 – CONDITIONS DATA CATEGORY MAPPINGS (PRACTIX)	8
APPENDIX F-1-1 - PREGNANCY	17
APPENDIX F-2 – MEDICATIONS DATA CATEGORY MAPPINGS (PRACTIX)	18
<i>Medications - Heart</i>	18
<i>Medications Other</i>	21
APPENDIX F-2-1 IMMUNISATIONS	30
APPENDIX F-3 – GENERAL DATA CATEGORY MAPPINGS (PRACTIX)	31
APPENDIX F-4 – DIABETES SIP DATA CATEGORY MAPPINGS (PRACTIX)	34
APPENDIX F-5 – ASSIGNED PROVIDERS (PRACTIX)	34
APPENDIX F-6 – PRACTIX CLINICAL DATA GROUPS (CDG).....	35

INTRODUCTION

Clinical Audit Tool (CAT)

The Clinical Audit Tool (CAT) analyses clinical information from GP Clinical Desktop Systems. It translates data into real statistical and graphical information that is easy to understand and action. This allows practitioners to assess and improve the quality and completeness of patient information. The benefit to the practice is to assist with its ongoing accreditation and provide opportunities to grow practice income. The emphasis of the tool is to help practice staff to take specific action to improve patient coverage in chronic disease management and prevention.

User Guide

The purpose of the User Guide is to provide instructions on how to install and use the functionality provided by the CAT.

The User Guide is split into 2 parts:

Part 1: Installation and Configuration including how to collect data sets

Part 2: Functionality

The Appendices for each Clinical Desktop System's Data Mappings are provided separately.

This full User Guide is available from

<http://help.pencs.com.au/cat.htm>

The Appendices contained in this document are for the iSOFT practiX clinical system.

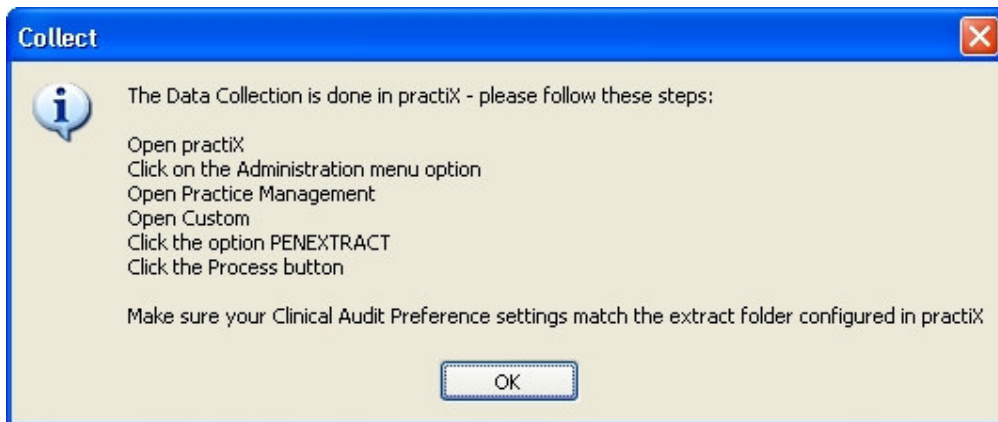
Pathology Results

Pathology Results must be received in atomised HL7 format in order for the results to be picked up by the CAT extractor. 'Atomised' format means that the HL7 results contain the data in predefined coded segments. The test code is the important bit of data the practiX CAT extraction tool looks for. This would usually be a LOINC code (Logical Observation Identifiers Names & Codes).

practiX provides a utility allowing the user to create a list of codes that will be grouped for a specified test. The list of tests that are required to be set up for CAT is provided in Appendix F-6.

APPENDIX A2 – PRACTIX DATA COLLECTION

For practiX users the data set collection is performed from within the practiX software application. Clicking the CAT 'Collect' button at the top left of the screen will provide you with the summary steps on how this is done within pratiX.

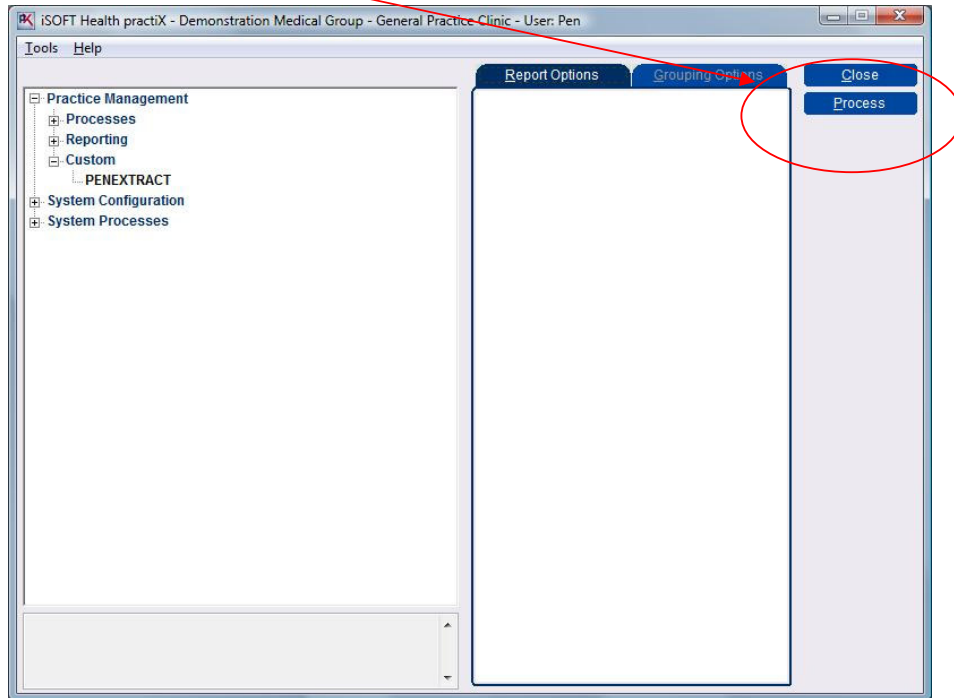


Collecting data sets from within practiX

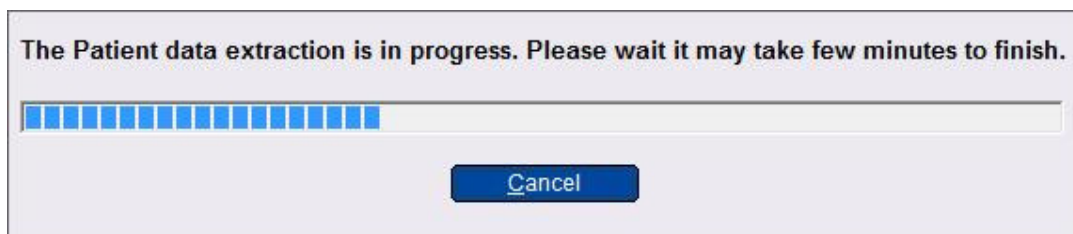
- Open the practiX application
- Click on the Administration menu option



- Open Practice Management
- Open Custom
- Click the option PENEXTRACT
- Click the Process button



A progress dialogue will show you the extraction status



When the extract has completed a dialogue box will be displayed advising which folder the extract files have been saved to. **It will most likely be set to C:\MSP\Custom\Extracts.**

Your Clinical Audit 'Data Folder Location' preference must match this folder.

APPENDIX F – PRACTIX DATA CATEGORY MAPPINGS

APPENDIX F-1 – CONDITIONS DATA CATEGORY MAPPINGS (PRACTIX)

The data collection process collects conditions that are found on the 'Current Conditions' screen. Chronic conditions are flagged as true for a patient if the condition is marked as **either active or inactive**. In practiX a condition is inactive if it has been end-dated on or before the extract date.

From the list below only Asthma, Depression and Drug Abuse are regarded as being recoverable. These conditions are flagged as true if they are marked as **active only**.

CAT Category	practiX Mapping – ICPC Code
Diabetes	
Type II	
	T90 002 diabetes mellitus T90 005 non insulin dependant diabetes T90 007 adult onset diabetes T90 009 type 2 diabetes T90 016 type 2 diabetes treated with insulin
Type I	
	T89 001 insulin dependant diabetes T89 002 type 1 diabetes T89 003 juvenile onset diabetes T89 004 complicated diabetes T89 005 diabetic coma T89 006 diabetic hyperglycaemia
Undefined diabetic	
	T99 011 diabetes insipidus

Respiratory	
Asthma	
	R96 001 Asthma R96 002 Broncial Asthma R96 005 Status Asthmaticus R96 007 Wheezy Bronchitis
COPD	
	R95 001 Chronic Obstructive Airway Disease R95 002 Chronic Obstructive Pulmonary Disease R95 008 Chronic airways limitation R79 003 chronic bronchitis

Cardiovascular	
CHD	
	K41 005 Angiography; coronary K53 003 Angioplasty; artery; coronary K53 009 Stent(s); coronary K54 007 Graft; coronary Artery Bypass K74 001 Angina Pectoris K74 002 Pain; angina K74 003 Spasm; artery; coronary K74 004 Angina; unstable K74 006 Insufficiency; coronary K74 007 IHD with Angina K75 002 Infarction; myocardial; acute K75 004 Occlusion; coronary K75 013 Infarction; myocardial K75 014 Heart Attack K76 003 Coronary Artery Disease K76 005 Disease; atherosclerotic; heart K76 011 Disease; ischaem Heart; subacut K76 013 Coronary Heart Disease K76 014 Disease; ischaemic Heart K76 015 Disease; ischaem Heart; chronic K76 018 IHD Without Angina K84 009 Disease; heart
Acute Coronary Syndrome	
	K74 006 Insufficiency;coronary K74 001 Angina pectoris K74 004 Angina;unstable
Myocardial Infarction	
	K75 002 Infarction; myocardial; acute K75 013 Infarction; myocardial

Hypertension	
	K85 001 Elevated Blood Pressure K85 004 High Blood Pressure K85 007 Raised Blood Pressure K86 001 Hypertension; essential K86 004 Hypertension; uncomplicated K86 005 Hypertension K85 008 Hypertension; labile K87 002 Hypertension;renal disease K87 001 Hypertension;heart disease K87 003 Hypertension;nephropathy K87 004 Hypertension;malignant K87 005 Hypertension;LV hypertrophy K87 006 Hypertension;cardiorenal K87 007 Hypertensive encephalopathy K87 010 Hypertension;complicated K87 011 Hypertension;secondary
Heart Failure	
	K77 001 Oedema; pulmonary; acute K77 002 Failure; congestive Cardiac K77 004 Failure; cardiac K77 008 Failure; ventricular; left K77 011 Failure; heart K77 013 Oedema; pulmonary K77 014 Failure; ventricular; right K82 003 Cor Pulmonale
Stroke	
	K90 002 Cerebrovascular Accident K90 006 Haemorrhage; cerebral K90 017 Stoke

Cardiovascular - Other:	
Peripheral Vascular Disease	
	K92 003 Disease;peripheral vascular K92 004 Gangrene K92 005 Ischaemia;contracture K92 006 Ischaemia;limb(gangrene) K92 017 Claudication;intermittent K92 021 Thromboangitis obliterans K92 022 Stenosis;artery K92 025 Arteriosclerosis
Carotid Stenosis	
	K52 008 Endarterectomy;intern carotid K53 007 Stent(s);carotid K53 010 Angioplasty;cerebral K91 011 Stenosis;arterial;precerebral K91 014 Stenosis;artery;carotid
Renal Artery Stenosis	
	U99 028 Stenosis;artery;renal

Mental Health	
Depression	
	P76 001 Depression P76 002 Depression; postnatal P76 010 Depression; reactive P76 016 Depression; endogenous P76 017 Melancholia P76 018 Anxiety with Depression
Anxiety	
	P01 002 Feeling; anxious P01 003 Anxiety P01 010 Feeling; tense P01 018 Tense P74 001 Anxious State P74 002 Feeling' anxious P74 004 Anxiety Neurosis P76 018 Anxiety with Depression P79 009 Phobia
Schizophrenia	
	P72 002 Schizophrenia; paranoid P72 011 Schizophrenia
Bipolar	
	P73 002 Depression;manic P73 004 Disorder;bipolar P73 007 Manic depressive P73 012 Psychosis;manic depressive

Mental Health - Developmental	
ADHD	
	P81 001 Hyperkinetic syndrome P81 003 Disorder;attent deficit(hyper)
Autism	
	P99 005 Autism P99 006 Autism;child P99 010 Aspergers syndrome

Mental Health - Degenerative	
Dementia	
	P70 001 Disease;Alzheimers P70 003 Dementia P70 004 Alzheimers dementia P70 007 Psychosis;senile P05 003 Senility

Bone Disease	
Osteoporosis	
	L95 001 Osteoporosis L95 002 Osteopenia L95 003 Fracture; osteoporotic
Osteoarthritis	
	L84 001 Spondylosis L84 004 Osteoarthritis; spine L89 001 Osteoarthritis; hip L90 001 Osteoarthritis; knee L91 003 Osteoarthritis L92 007 Osteoarthritis; shoulder

Renal	
Renal Impairment	
	U28 001 Transplant;renal U59 001 Dialysis; kidney (renal) U59 008 Haemodialysis U85 001 Polycystic kidney U88 001 Nephropathy U88 003 Nephrotic syndrome U88 008 Glomerulonephritis;chronic U88 010 Nephropathy;analgesic U88 011 Nephropathy;diabetic U88 012 Nephrosclerosis U99 005 Failure; renal; acute U99 006 Necrosis;renal U99 016 Uraemia U99 022 Insufficiency;renal U99 023 Failure;renal;chronic U99 024 Necrosis;renal;papillary U99 025 Pyelonephritis;chronic U99 028 Stenosis;artery;renal U99 030 Failure;renal;NOS U99 031 Disease;renal U99 032 Impairment;renal U99 034 Disease;kidney;chronic U99 035 Disease;kidney;chronic;stage 1 U99 036 Disease;kidney;chronic;stage 2 U99 037 Disease;kidney;chronic;stage 3 U99 038 Disease;kidney;chronic;stage 4 U99 039 Disease;kidney;chronic;stage 5

Chronic Renal Failure	
	U28 001 Transplant;renal
	U59 001 Dialysis; kidney (renal)
	U59 008 Haemodialysis
	U85 001 Polycystic kidney
	U88 001 Nephropathy
	U88 003 Nephrotic syndrome
	U88 008 Glomerulonephritis;chronic
	U88 010 Nephropathy;analgesic
	U88 011 Nephropathy;diabetic
	U88 012 Nephrosclerosis
	U99 006 Necrosis;renal
	U99 016 Uraemia
	U99 022 Insufficiency;renal
	U99 023 Failure;renal;chronic
	U99 024 Necrosis;renal;papillary
	U99 025 Pyelonephritis;chronic
	U99 028 Stenosis;artery;renal
	U99 030 Failure;renal;NOS
	U99 031 Disease;renal
	U99 032 Impairment;renal
	U99 034 Disease;kidney;chronic
	U99 035 Disease;kidney;chronic;stage 1
	U99 036 Disease;kidney;chronic;stage 2
	U99 037 Disease;kidney;chronic;stage 3
	U99 038 Disease;kidney;chronic;stage 4
	U99 039 Disease;kidney;chronic;stage 5

Other	
Hyperlipidaemia	
	T93 001 Hypercholesterolaemia
	T93 006 High Cholesterol
	T93 008 Hyperlipidaemia
	T93 015 Dyslipidaemia

Drug Abuse	
	P18 001 Dependence;medicinal
	P18 002 Abuse;medicinal;dependent
	P18 003 Abuse;medicinal;non-depend
	P18 004 Withdrawal;drug;legal
	P18 005 Abuse;prescript drug;depend
	P18 006 Abuse;prescript drug;non-depen
	P18 007 Dependence;prescription drug
	P18 008 Drug seeking behaviour
	P19 001 Addiction;drug(s)
	P19 002 Dependence;drug(s)
	P19 003 Glue sniffing (habitual)
	P19 004 Psychosis;drug
	P19 005 Abuse;drug(s);dependent
	P19 006 Abuse;drug(s);non dependent
	P19 007 Abuse;drug(s);glue
	P19 008 Abuse;drug(s);other substance
	P19 009 Problem;drugs
	P19 010 Problem;substance related
	P19 011 Withdrawal;drug;illegal
	P19 012 Addiction;drug(s);heroin
	P19 013 Addiction;drug(s);amphetamine
	P19 014 Addiction;drug(s);ecstasy
	P19 015 Addiction;drug(s);marijuana
	P19 016 Addiction;drug(s);LSD
	P19 017 Addiction;drug(s);cocaine
	P19 018 Abuse;drug(s);heroin
	P19 019 Abuse;drug(s);amphetamine
	P19 020 Abuse;drug(s);ecstasy
	P19 021 Abuse;drug(s);marijuana
	P19 022 Abuse;drug(s);LSD
	P19 023 Abuse;drug(s);cocaine
	P19 024 Abuse;drug(s)
	P19 025 Withdrawal;drug
	P19 026 Overdose;drug;non medicinal
	P19 027 Abuse;kava
	P19 028 Abuse;solvent
	P19 029 Sniffing;petrol
	P19 030 Sniffing;paint
	P19 031 Intoxication;other substance

Other - STIs	
Chlamydia	
[Active only conditions are collected]	X92 001 Chlamydia;F X92 002 Chlamydia;cervical

Appendix F-1-i - Pregnancy

Pregnancy is true if the patient has an open pregnancy in the Consultation Tools > Antenatal screen.

APPENDIX F-2 – MEDICATIONS DATA CATEGORY MAPPINGS (PRACTIX)

The data collection process collects medications that are found on the 'Current Medications' screen. It does not make any decisions about whether a medication should actually have been removed from the 'Current Medications' screen. The GP is responsible for making sure the list of medications is accurate.

NOTE

practiX collects medications at the product level. Where the mapping below specifies **Products under the following generics** then what is being collected are products current under a generic as at the last practiX mappings update. Please refer to the associated Excel Spreadsheet for specific product names and advise PCS if there is a new product that needs inclusion.

Medications - Heart

CAT Category	practiX Mapping
ARB	Products under the following generics: Candesartan cilexetil Eprosartan mesylate Irbesartan Losartan potassium Olmesartan medoxomil Telmisartan Valsartan
ACE Inhibitors	Products under the following generics: Captopril Enalapril maleate Fosinopril sodium Lisinopril dihydrate Perindopril arginine Perindopril erbumine Quinapril hydrochloride Ramipril Trandolapril
Aspirin	Products under the following generics: Acetylsalicylic acid Aspirin

Warfarin	<p>Products under the following generics:</p> <p>Warfarin sodium</p>
Clopidogrel	<p>Products under the following generics:</p> <p>Clopidogrel bisulfate Clopidogrel hydrogen sulphate</p>
Beta Blockers - Antihypertensive	<p>Products under the following generics:</p> <p>Atenolol Bisoprolol fumarate Carvedilol Labetalol hydrochloride Metoprolol succinate Oxprenolol hydrochloride Pindolol Propranolol hydrochloride</p>
Beta Blockers – Chronic heart failure	<p>Products under the following generics:</p> <p>Bisoprolol fumarate Carvedilol</p> <p>Products: Toprol-XL</p>
Beta Blockers - Myocardial Infarction	<p>Products under the following generics:</p> <p>Atenolol Betaxolol hydrochloride Bisoprolol fumarate Carvedilol Esmolol hydrochloride Labetalol hydrochloride Metoprolol succinate Oxprenolol hydrochloride Pindolol Sotalol hydrochloride</p>

Calcium Antagonists	<p>Products under the following generics:</p> <ul style="list-style-type: none"> Amlodipine besylate Amlodipine maleate Diltiazem hydrochloride Felodipine Lercanidipine hydrochloride Nifedipine Nimodipine Verapamil hydrochloride
Diuretics	<p>Products under the following generics:</p> <ul style="list-style-type: none"> Acetazolamide Amiloride hydrochloride Bumetanide Chlortalidone Chlorthalidone Eplerenone Ethacrynic acid Frusemide Hydrochlorothiazide Indapamide hemihydrate Spironolactone Triamterene
Lipid M/fying - Statins	<p>Products under the following generics:</p> <ul style="list-style-type: none"> Atorvastatin calcium Fluvastatin sodium Pravastatin sodium Rosuvastatin calcium Simvastatin
Lipid M/fying - Other	<p>Products under the following generics:</p> <ul style="list-style-type: none"> Cholestyramine Colestipol hydrochloride Ezetimibe Fenofibrate Gemfibrozil Nicotinic acid

Medications Other

Antidiabetics	
H/glycaemics – Insulin	<p>Products under the following generics:</p> <ul style="list-style-type: none"> Glargine insulin glulisine insulin Insulin, aspart (rys) Insulin, aspart (rys) protamine suspension Insulin, detemir (rys) Insulin, glargine Insulin, glulisine Insulin, isophane (rbe) Insulin, isophane (rys) Insulin, isophane bovine Insulin, lispro (rbe) Insulin, lispro (rbe) protamine suspension Insulin, neutral (rbe) Insulin, neutral (rys) Insulin, neutral bovine Isophane insulin (bovine) Isophane insulin (rys) Lispro insulin Neutral insulin (bovine)
H/glycaemics – Oral	<p>Products under the following generics:</p> <ul style="list-style-type: none"> Acarbose Glibenclamide Gliclazide Glimepiride Glipizide Glyburide Metformin hydrochloride Pioglitazone hydrochloride Repaglinide Rosiglitazone maleate
Metformin	<p>Products under the following generics:</p> <ul style="list-style-type: none"> Metformin hydrochloride Rosiglitazone maleate

Mental Health	
Antipsychotics	<p>Products under the following generics:</p> <ul style="list-style-type: none"> Amisulpride Aripiprazole Chlorpromazine hydrochloride Clozapine Droperidol Flupenthixol decanoate Flupentixol decanoate Fluphenazine decanoate Haloperidol Haloperidol decanoate Olanzapine Paliperidone Pericyazine Prochlorperazine Prochlorperazine maleate Prochlorperazine mesylate Quetiapine fumarate Risperidone Trifluoperazine hydrochloride Zuclopenthixol acetate Zuclopenthixol decanoate Zuclopenthixol dihydrochloride
Antipsychotics - Typical	<p>Products under the following generics:</p> <ul style="list-style-type: none"> Chlorpromazine hydrochloride Droperidol Flupenthixol decanoate Flupentixol decanoate Fluphenazine decanoate Haloperidol Haloperidol decanoate Pericyazine Prochlorperazine Prochlorperazine maleate Prochlorperazine mesylate Trifluoperazine hydrochloride Zuclopenthixol acetate Zuclopenthixol decanoate Zuclopenthixol dihydrochloride

Antipsychotics - Atypical	<p>Products under the following generics:</p> <ul style="list-style-type: none"> Amisulpride Aripiprazole Clozapine Olanzapine Paliperidone Quetiapine fumarate Risperidone
Antidepressants	<p>Products under the following generics:</p> <ul style="list-style-type: none"> Amitriptyline hydrochloride Citalopram hydrobromide Clomipramine hydrochloride Desvenlafaxine Dosulepin hydrochloride Doxepin hydrochloride Duloxetine hydrochloride Escitalopram oxalate Fluoxetine hydrochloride Fluvoxamine maleate Imipramine hydrochloride Mianserin hydrochloride Mirtazapine Moclobemide Nortriptyline hydrochloride Paroxetine hydrochloride Paroxetine mesilate Phenelzine sulfate Reboxetine mesylate Sertraline hydrochloride Tranlycypromine sulfate Trimipramine Venlafaxine hydrochloride
Mood Stabiliser - Lithium	<p>Products under the following generics:</p> <ul style="list-style-type: none"> Lithium carbonate Lithium chloride

Anti-anxiety	Products under the following generics: Alprazolam Bromazepam Buspirone hydrochloride Chlorpromazine hydrochloride Clobazam Diazepam Dosulepin hydrochloride Doxepin hydrochloride Escitalopram oxalate Gentian Gentiana lutea root dry Hops Humulus lupulus fruit dry Lorazepam Manserin hydrochloride Oxazepam Paroxetine hydrochloride Paroxetine mesilate Passiflora incarnata herb dry Passionflower Pericyazine Sertraline hydrochloride Trifluoperazine hydrochloride Trimipramine Valerian Valeriana officinalis root dry
Stimulants	Products under the following generics: Atomoxetine hydrochloride Dexamphetamine sulfate Methylphenidate hydrochloride

Corticosterids	
Glucocorticoids	Products under the following generics: Beclomethasone dipropionate Betamethasone acetate Betamethasone dipropionate Betamethasone sodium phosphate Betamethasone valerate Budesonide Cortisol Cortisol acetate Cortisol sodium succinate Cortisone acetate Dexamethasone Dexamethasone sodium phosphate Fluticasone furoate Fluticasone propionate Hydrocortisone Hydrocortisone acetate Hydrocortisone sodium succinate Methylprednisolone acetate Methylprednisolone sodium succinate Prednisolone Prednisolone hexanoate Prednisolone sodium phosphate Prednisone Triamcinolone acetonide

Pain Relief	
NSAIDs	<p>Products under the following generics:</p> <ul style="list-style-type: none"> Celecoxib Diclofenac diethylammonium Diclofenac potassium Diclofenac sodium Etoricoxib Ibuprofen Ibuprofen lysine Indomethacin Ketoprofen Ketorolac trometamol Mefenamic acid Meloxicam Naproxen Naproxen sodium Parecoxib sodium Piroxicam Sulindac Tiaprofenic acid
COX2	<p>Products under the following generics:</p> <ul style="list-style-type: none"> Celecoxib Etoricoxib Meloxicam Parecoxib sodium

Respiratory	
Steroid – Inhaled	<p>Products</p> <p>Entocort (Modified release capsules) Pulmicort (Turbuhaler) Pulmicort (Nebulising Solution) Symbicort Turbuhaler (Powder for Inhalation) Symbicort Turbuhaler (Powder for Inhalation) Symbicort Turbuhaler (Powder for Inhalation) Budamax (Nasal spray) Rhinocort (Nasal spray) Rhinocort Hayfever (Nasal spray) Alvesco (Metered dose inhaler) Alvesco (Metered dose inhaler) Qvar (Inhaler) Qvar (Inhaler) Beconase Allergy & Hayfever 12 Hour (Nasal spray) Flixotide (Metered Dose Inhaler (CFC-Free)) Flixotide (Metered Dose Inhaler (CFC-Free)) Flixotide (Dry Powder Inhaler) Flixotide (Dry Powder Inhaler) Flixotide (Metered Dose Inhaler) Flixotide Nebules (Nebuliser solution) Seretide (Powder for Inhalation) Seretide (Powder for Inhalation) Seretide (Powder for Inhalation) Seretide (Inhaler (CFC-free)) Seretide (Inhaler (CFC-free)) Seretide (Inhaler (CFC-free)) Beconase Allergy & Hayfever 24 Hour (Nasal spray) Flixonase Nasule Drops (Drops)</p>
Steroid - Oral	<p>Products</p> <p>Cortate (Tablets) Panafcort, Panafcortelone (Tablets) Predsone, Predsolone (Tablets) Sone (Tablets)</p>
COPD	<p>Products under the following generics:</p> <p>Tiotropium bromide</p>

Asthma - Relievers	<p>Products</p> <p>Ventolin Obstetric Injection (Injection) Ventolin (Syrup) Ventolin (Injection) Aiomir Autohaler and Inhaler (Autohaler) Aiomir Autohaler and Inhaler (Inhaler) Asmol CFC-free Inhaler (Inhaler) Asmol uni-dose (Nebulising Solution) Butamol (Nebuliser solution) Chemmart Salbutamol (Nebulising Solution) Combivent Metered Dose Aerosol (Inhaler) Epaq Inhaler (Inhaler) GenRx Salbutamol Inhalation Ampoule (Nebulising Solution) Pharmacor Salbutamol (Nebulising solution) Salbutamol Inhalation Solution (Nebulising Solution) Salbutamol Inhalation Solution (Nebulising Solution) Salbutamol Sandoz (Nebulising solution) Salbutamol-GA (Nebulising solution) Terry White Chemists Salbutamol (Nebulising Solution) Ventolin CFC-free Inhaler (Inhaler) Ventolin Respirator Solution and Nebules (Nebulising Solution) Ventolin Respirator Solution and Nebules (Nebulising Solution) Ventolin Rotacaps (Powder for Inhalation) Bricanyl Elixir and Injection (Elixir) Bricanyl Elixir and Injection (Injection) Bricanyl for Inhalation (Turbuhaler) Bricanyl for Inhalation (Nebulising Solution) Atrovent Metered Aerosol (CFC-free) (Metered aerosol) Atrovent Nebulising Solution (Inhalation Solution) Atrovent Nebulising Solution (Unit Dose Vials) Atrovent Nasal, Atrovent Nasal Forte (Nasal Spray) Atrovent Nasal, Atrovent Nasal Forte (Nasal Spray)</p>
Asthma – Symptom Controllers	<p>Products</p> <p>Serevent (Inhaler) Serevent (Inhaler) Seretide (Powder for Inhalation) Seretide (Powder for Inhalation) Seretide (Powder for Inhalation) Seretide (Inhaler (CFC-free)) Seretide (Inhaler (CFC-free)) Seretide (Inhaler (CFC-free)) Foradile (Powder for inhalation) Oxis Turbuhaler (Turbuhaler)</p>

<p>Asthma - Preventers</p>	<p>Products</p> <p>Qvar (Inhaler) Qvar Autohaler Inhaler (Inhaler) Pulmicort (Turbuhaler) Alvesco 80 metered dose inhaler (Metered dose inhaler) Alvesco 160 metered dose inhaler (Metered dose inhaler) Flixotide Junior (CFC-Free) Inhaler (Metered Dose Inhaler (CFC-Free)) Flixotide Inhaler (CFC-Free) (Metered Dose Inhaler (CFC-Free)) Flixotide Junior Accuhaler Inhaler (Dry Powder Inhaler) Flixotide Accuhaler Inhaler (Dry Powder Inhaler) Flixotide Junior Inhaler (CFC containing) (Metered Dose Inhaler) Flixotide Nebules (Nebuliser solution) Intal (Nebulising Solution) Intal CFC-Free Inhaler (Inhaler) Intal Forte CFC-Free Inhaler (Inhaler) Intal Spincaps Powder (Powder for Inhalation) Intal Spinhaler (Inhalation Device) Tilade CFC-Free (Inhaler) Singulair (Tablets) Accolate (Tablet)</p>
<p>Asthma - Combination</p>	<p>Products</p> <p>Seretide MDI (50/25) (Inhaler (CFC-free)) Seretide MDI (125/25) (Inhaler (CFC-free)) Seretide MDI (250/25) (Inhaler (CFC-free)) Seretide Accuhaler (100/50) (Powder for Inhalation) Seretide Accuhaler (250/50) (Powder for Inhalation) Seretide Accuhaler (500/50) (Powder for Inhalation) Symbicort Turbuhaler 100/6 (Powder for Inhalation) Symbicort Turbuhaler 200/6 (Powder for Inhalation) Symbicort Turbuhaler 400/12 (Powder for Inhalation)</p>

Appendix F-2-1 Immunisations

Immunisations are collected if they have been entered in the Immunisations screen.

The products collected for each type of immunisation can be viewed from the immunisations screen by choosing the disease they are associated with and clicking the 'Next Step' button.

Immunisation	practiX Mapping
	Health Summary > Immunisations
Influenza	Select Disease = Influenza and click 'Next Step'
Pneumococcal	Select Disease = Pneumococcal and click 'Next Step'
HPV	Select Disease = HPV and click 'Next Step'
Pertussis	Select Disease = Pertussis and click 'Next Step'
Swine Flu	Specific products are collected for Swine Flu: Panvax Panvax Jr

APPENDIX F-3 – GENERAL DATA CATEGORY MAPPINGS (PRACTIX)

Demographic	practiX Mapping
Gender	Patient Details screen > Sex
Ethnicity	Patient Details screen > Drop down list for Aboriginal, TSI, non ATSI, Not Stated, Not Recorded
DVA	Patient Details Screen > D.V.A field has a value
Age	Patient Details screen > Date of Birth
Last Visit	Patients last recoded visit through the Reception waiting room
Postcode	Patient Details screen > Postcode

Allergy	practiX Mapping
	Health Summary > Allergy History
Allergy Recorded	An Allergy Item is present
No Known Allergies	The 'Nil Known' button has been clicked
Nothing Recorded	No Allergy Items are present and the 'Nil Known' button has not been clicked

Smoking	practiX Mapping
	Health Summary > Health & Lifestyle >
Daily Smoker	Smoking Status = Daily Smoker
Irregular Smoker	Smoking Status = Weekly Smoker or Smoking Status = Irregular Smoker
Ex Smoker	Smoking Status = Ex-Smoker
Never Smoked	Smoking Status = Never Smoked
Nothing Recorded	Smoking Status has nothing selected or Smoking Status = Unknown or Smoking Status = Passive Smoker

Alcohol	practiX Mapping
	Health Summary > Health & Lifestyle >
Drinker	Drinks Alcohol ticked
Non Drinker	Drinks Alcohol not ticked
Nothing Recorded	Health & Lifestyle screen has not been reviewed

Measurements	practiX Mapping
BMI	Health Summary Views > Height / Weight > Sitting
Waist	Health Summary Views > Height / Weight
FBG (BSLF)	Pathology – requires CDG ¹ setup > FASTING_BLOOD_GLUCOSE
Cholesterol	Pathology – requires CDG setup > CHOLESTROL
HDL	Pathology – requires CDG setup > HDL
LDL	Pathology – requires CDG setup > LDL
Triglycerides	Pathology – requires CDG setup > TRIGLYCERIDES
Creatinine	Pathology – requires CDG setup > CREATININE
Urinary creatinine	Pathology – requires CDG setup > CREATININE_URINARY
Microalbumin	Pathology – requires CDG setup > MICROALBUMIN
HbA1c	Pathology – requires CDG setup > HBA1C
BP	Health Summary Views > Blood Pressure
Respiratory – Spirometry	Health Summary Views > Respiratory > FEV1 and FVC post values
ACR	Pathology – requires CDG setup > MICROALBUMIN_CREATININE_RATIO

¹ Clinical Data Groups – these are set up through practiX Administration – refer to Appendix F-6

Diseases	practiX Mapping
Condition	<p>Past History screen > Checks the condition selected on history items, where Conditions are selected from a coded list.</p> <p>Refer to the Appendices for a list of conditions mapping to each CAT condition.</p>

Pap Smear	practiX Mapping
	<p>Pathology</p> <p>Pathology – requires CDG² setup > PAPSMEAR</p>

Medications	practiX Mapping
Medication	<p>Current Rx screen > Checks the Drugs listed, where Drugs are selected from a coded list</p> <p>Refer to the Appendices for a list of medications mapping to each CAT medication.</p>
HMR	Current Rx screen > Counts All Drugs listed as current medications

² Clinical Data Groups – these are set up through practiX Administration – refer to Appendix F-6

APPENDIX F-4 – DIABETES SIP DATA CATEGORY MAPPINGS (PRACTIX)

Note that Diabetes SIP data is NOT collected from the practiX Diabetes Review Tool.

Diabetes SIP Item	practiX Mapping
HbA1c	Pathology – requires CDG ³ setup > HBA1C
Eye Exam *	Not Collected
BMI	Health Summary Views > Height / Weight > Sitting
BP	Health Summary Views > Blood Pressure
Foot Exam *	Not Collected
Cholesterol	Pathology – requires CDG setup > CHOLESTROL
Triglycerides	Pathology – requires CDG setup > TRIGLYCERIDES
HDL	Pathology – requires CDG setup > HDL
Microalbumin	Pathology – requires CDG setup > MICROALBUMIN
Smoking	Health Summary > Health & Lifestyle > Smoking Status recorded

* NOTE: practiX does not currently collect Eye Exam and Foot Exam.

APPENDIX F-5 – ASSIGNED PROVIDERS (PRACTIX)

Assigned Provider Mapping in practiX

practiX uses the 'Usual Provider' that is entered on the 'Patient Details' screen.

³ Clinical Data Groups – these are set up through practiX Administration – refer to Appendix F-6

APPENDIX F-6 – PRACTIX CLINICAL DATA GROUPS (CDG)

Clinical Data Groups (CDG) are designed for use with pathology results. They ensure that the test codes used by different Pathology labs can be grouped together as a meaningful list.

Refer to the PCS Document – ‘How to set up practiX Clinical Data Groups’ for step by step instructions on how to set these up.

Note that **only test codes** will be picked up for grouping. Test names are not picked up.

Pathology Results:

You will need to add CDG entries for the LOINC Codes listed below. The Pathology labs you use may have different codes. This is specifically so for pap smears. You can check what these are by right-clicking on a result and choosing the option to ‘Show Atomised results’.

CDG Name	Result Code
CHOLESTEROL	14647-2
CREATININE	14682-9
CREATININE_URINARY	14683-7
FASTING_BLOOD_GLUCOSE	14768-6 14771-0
HBA1C	17856-6 4548-4
HDL	14646-4
LDL	22748-8
MICROALBUMIN	14957-5 14956-7 1754-1
MICROALBUMIN_CREATININE_RATIO	32294-1 30000-4
PAPSMEAR	
TRIGLYCERIDES	14927-8 30524-3