

PCS Clinical Audit Tool – User Guide

Version 2.12

APPENDICES A3

APPENDICES H

MEDINET DATA COLLECTION

MEDINET DATA MAPPINGS

Company Contacts

Sydney (Head Office)

Pen Computer Systems
Level 6, The Barrington
10-14 Smith St
PARRAMATTA NSW 2150

Phone: +61 2 9635 8955
Fax: +61 2 9635 8966
Email: enquiries@pencs.com.au
Web: www.pencs.com.au

Melbourne Office

Pen Computer Systems
Level 5
434 St Kilda Rd
MELBOURNE VIC 3004

Phone: +61 3 9866 8477
Fax: +61 3 9866 5699

Document Contact

Contact: **Christine Chidgey**

Phone: +61 3 9866 8477

Email: christine.chidgey@pencs.com.au

Document Control

Version	Date	Modified By	Description
2.12	02/08/2011	Christine Chidgey	Initial Document

Contents

COMPANY CONTACTS.....	2
<i>Sydney (Head Office)</i>	2
<i>Melbourne Office</i>	2
DOCUMENT CONTROL	3
CONTENTS	4
INTRODUCTION	5
CLINICAL AUDIT TOOL (CAT)	5
USER GUIDE	5
APPENDIX A3 - MEDINET DATA COLLECTION	6
APPENDIX H – MEDINET DATA CATEGORY MAPPINGS	9

INTRODUCTION

Clinical Audit Tool (CAT)

The Clinical Audit Tool (CAT) analyses clinical information from GP Clinical Desktop Systems. It translates data into real statistical and graphical information that is easy to understand and action. This allows practitioners to assess and improve the quality and completeness of patient information. The benefit to the practice is to assist with its ongoing accreditation and provide opportunities to grow practice income. The emphasis of the tool is to help practice staff to take specific action to improve patient coverage in chronic disease management and prevention.

User Guide

The purpose of the User Guide is to provide instructions on how to install and use the functionality provided by the CAT.

The User Guide is split into 2 parts:

Part 1: Installation and Configuration including how to collect data sets

Part 2: Functionality

The Appendices for each Clinical Desktop System's Data Mappings are provided separately.

This full User Guide is available from

<http://help.pencs.com.au/cat.htm>

The Appendices contained in this document are for the Medinet clinical system.

APPENDIX A3 - MEDINET DATA COLLECTION

For Medinet users the data set collection is performed from within the Medinet software application. Clicking the CAT 'Collect' button at the top left of the screen will provide you with the summary steps on how this is done within Medinet (Figure A3-1).

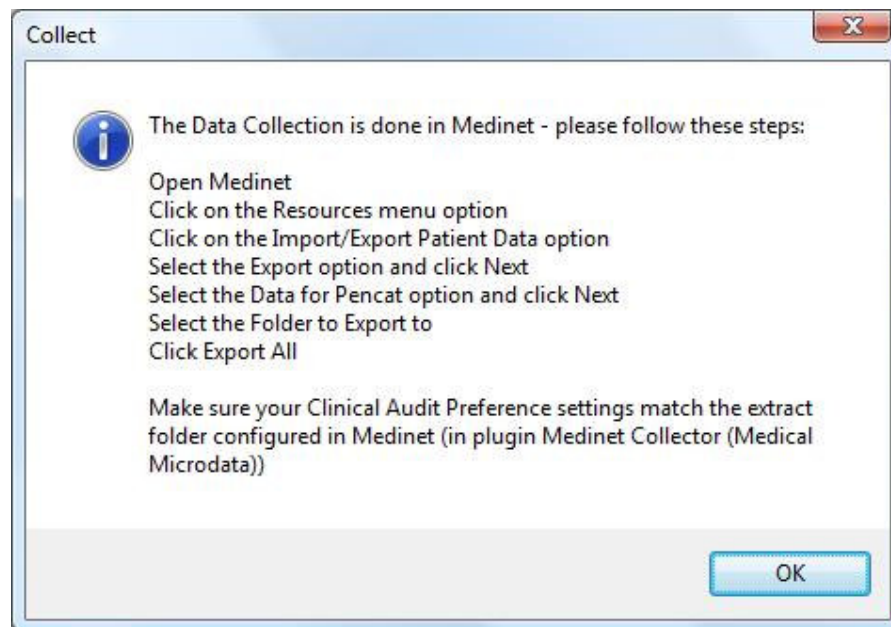


Figure A3-1: Medinet Collect Dialogue with CAT

Collecting data sets from within Medinet

- Open the Medinet application
- Click on the 'Resources' menu option
- Click on the 'Import/Export Patient Data' option (Figure A3-2)
- Select the 'Export' option and click 'Next' (Figure A3-3)
- Select the 'Data for Pencil' option and click 'Next' (Figure A3-4)
- Click the 'Browse' button for 'Select Folder to Export' (Figure A3-5)
- Click 'Export All' and the progress bar will begin (Figure A3-6)
- An 'Export Completed' alert will display when the collection is finished (Figure (A3-7))

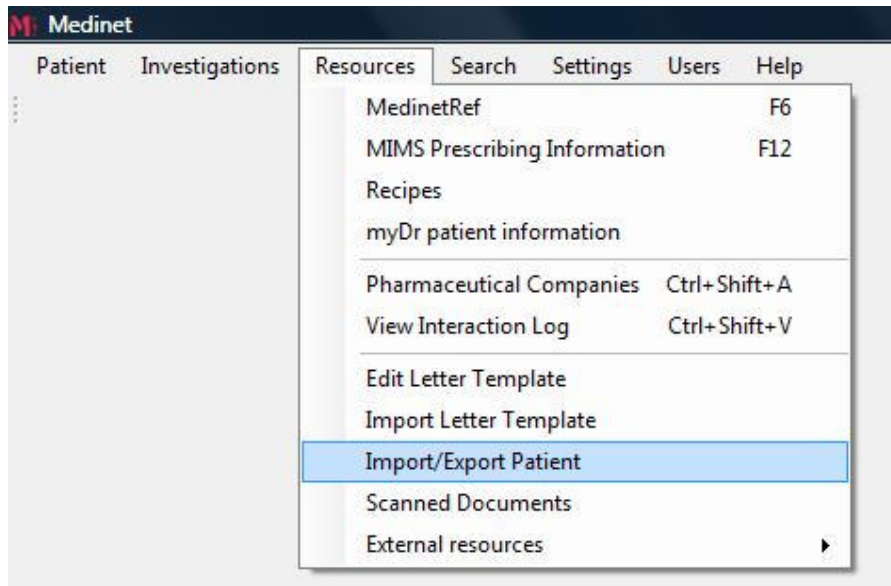


Figure A3-2 Resources > Import/Export Patient

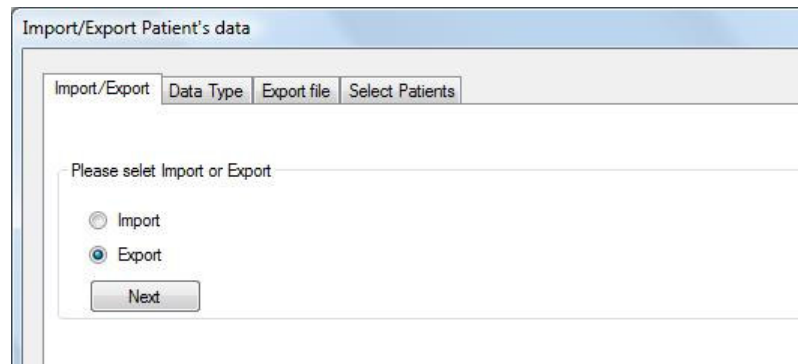


Figure A3-3 Step 1: Export

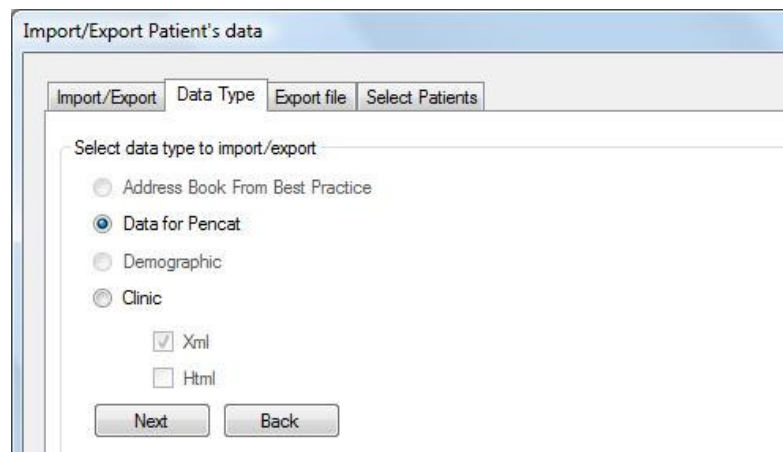


Figure A3-4 Step 2: Data for Pencat

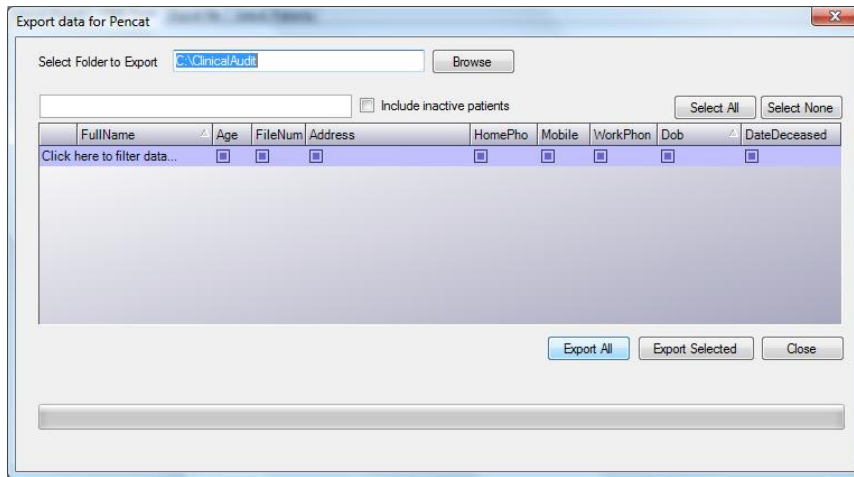


Figure A3-5 Step 3: Select Export Folder

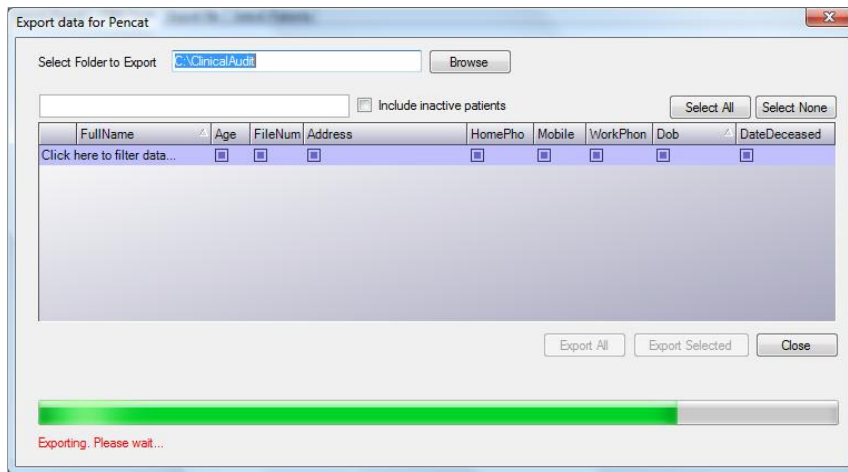


Figure A3-6 Step 4: Click 'Export All' and progress bar will begin

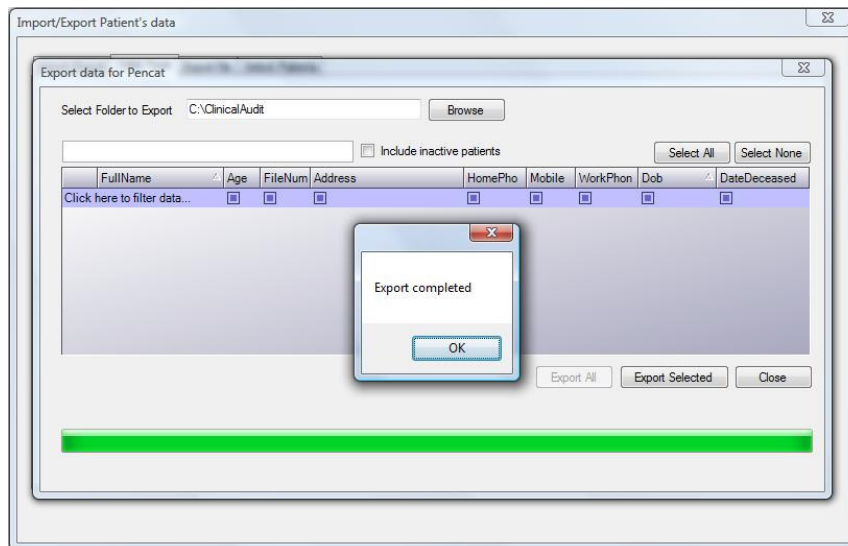


Figure A3-7 Step 5: Export completed

APPENDIX H – MEDINET DATA CATEGORY MAPPINGS

These Appendices are still being completed.