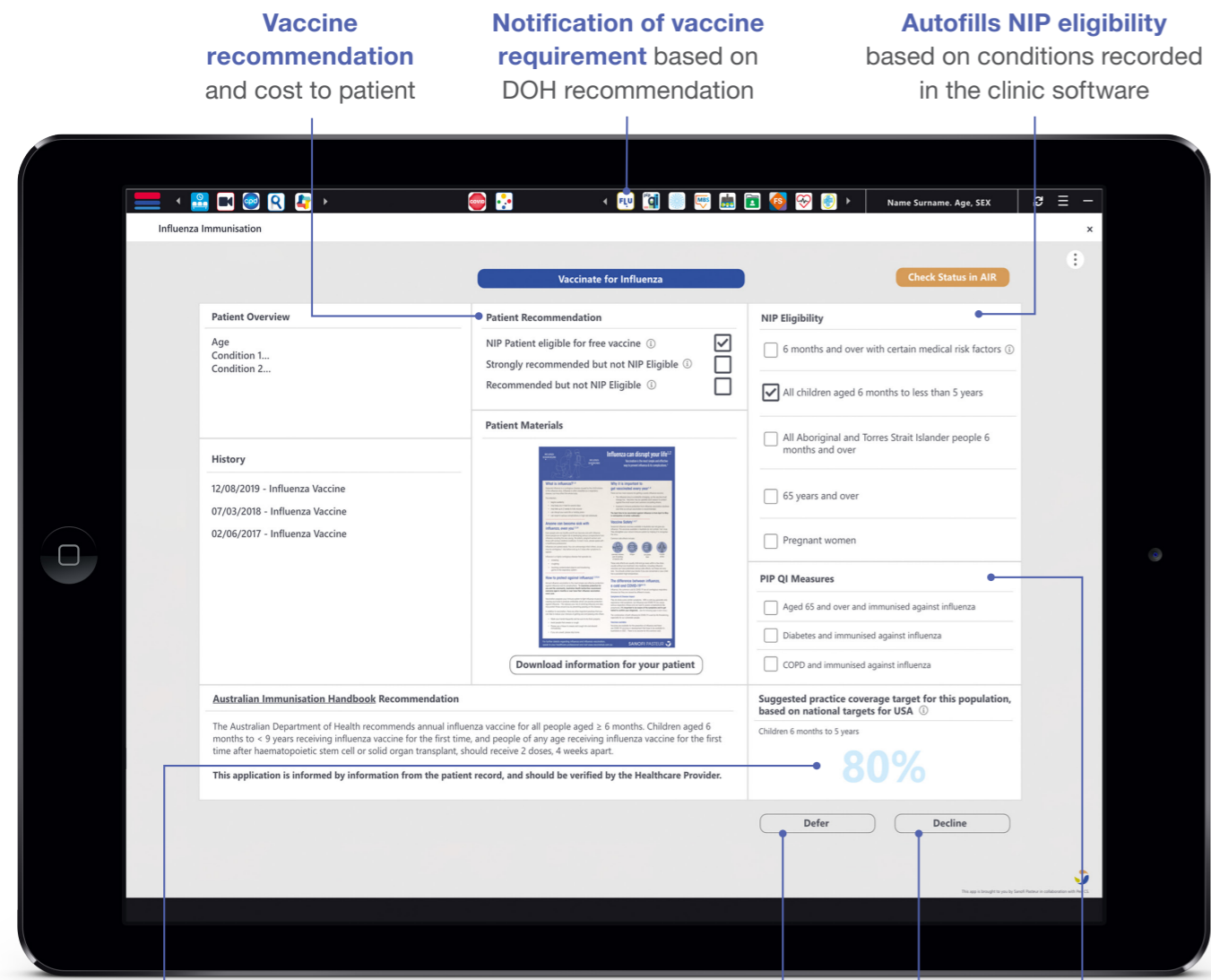


AIM FOR BEST PRACTICE BENCHMARKS FOR VACCINE COVERAGE WITH THE FLU APP



Vaccine recommendation and cost to patient

Notification of vaccine requirement based on DOH recommendation

Autofills NIP eligibility based on conditions recorded in the clinic software

Suggested practice coverage targets based on national targets for USA

Set reminder for deferred vaccinations

Record reasons for declining vaccine

High visibility of patient alignment with PIP QI measures

Scan the QR code for additional information about the FLU app, including training resources, user guides and upcoming webinars



To learn more about the FLU app and how it can benefit your practice, talk to your Sanofi or PHN representative.

REFERENCES: 1. Keech M and Beardsworth P. *Pharmacoeconomics* 2008;26(11):911–24. 2. World Health Organization. Influenza (seasonal). Available at: [https://www.who.int/en/news-room/fact-sheets/detail/influenza-\(seasonal\)](https://www.who.int/en/news-room/fact-sheets/detail/influenza-(seasonal)) (accessed February 2022). 3. Paules C and Subbarao K. *Lancet* 2017;390(10095):697–708 4. The Australian Immunisation Handbook. Influenza (flu). Available at: <https://immunisationhandbook.health.gov.au/vaccine-preventable-diseases/influenza-flu> (accessed February 2022). CAT: clinical audit tool; DOH: Department of Health; NIP: National Immunisation Program; PHN: Primary Health Network; PIP QI: Practice Incentive Payment Quality Improvement.

sanofi-aventis australia pty ltd ABN 31 008 558 807. Trading as SANOFI PASTEUR. 12-24 Talavera Rd, Macquarie Park NSW 2113. Customer Service Ph: 1800 829 468. MAT-AU-2200083. Ward 6. SAIN23984W. Date of preparation: February 2022.

sanofi

Information for practice managers



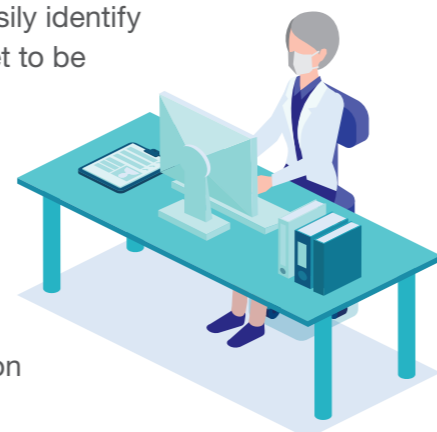
FACILITATE LIFE UNINTERRUPTED BY INFLUENZA

Each year influenza affects millions of people globally, interrupting lives, and potentially causing severe complications which can include pneumonia or even heart attacks.¹⁻³ The Facilitate Life Uninterrupted (FLU) app is available on Topbar and designed to help increase influenza vaccine uptake in your practice by helping you identify patients who are recommended for influenza vaccination but are yet to be vaccinated for the current season.

pencs | sanofi

INCREASE INFLUENZA IMMUNISATION COVERAGE IN YOUR PRACTICE WITHOUT INTERRUPTING CURRENT WORKFLOWS

The **FLU** App combines the Australian Department of Health's recommendation, NIP eligibility criteria and the patient record so you can quickly and easily identify patients who are recommended for an influenza vaccination but are yet to be vaccinated for the current season.

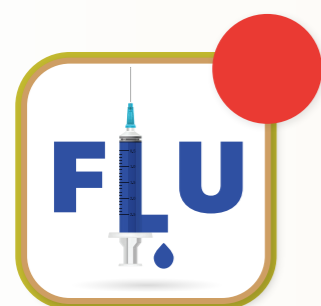


With the **FLU** app, GPs and nurses can:

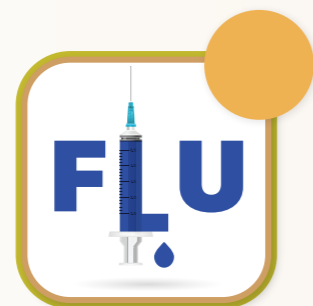
- Identify missed vaccinations
- Reduce the risk of vaccination double-dosing
- Increase visibility of vaccination and NIP eligibility status
- Support doctor-patient conversations about the need for vaccination
- Easily view patient alignment to PIP QI measures

THE **FLU** APP NOTIFIES GPs AND NURSES WHEN PATIENTS ARE RECOMMENDED FOR INFLUENZA VACCINATION

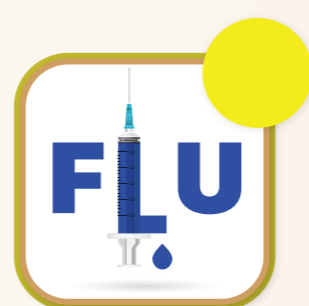
When an eligible patient who is not yet vaccinated against influenza for the current season presents for a consultation, the FLU app uses a simple notification system based on the Australian Department of Health recommendations and NIP eligibility criteria to alert the GP/nurse.



Strongly recommended for vaccination, **AND** NIP funded



Strongly recommended for vaccination, **NOT** NIP funded



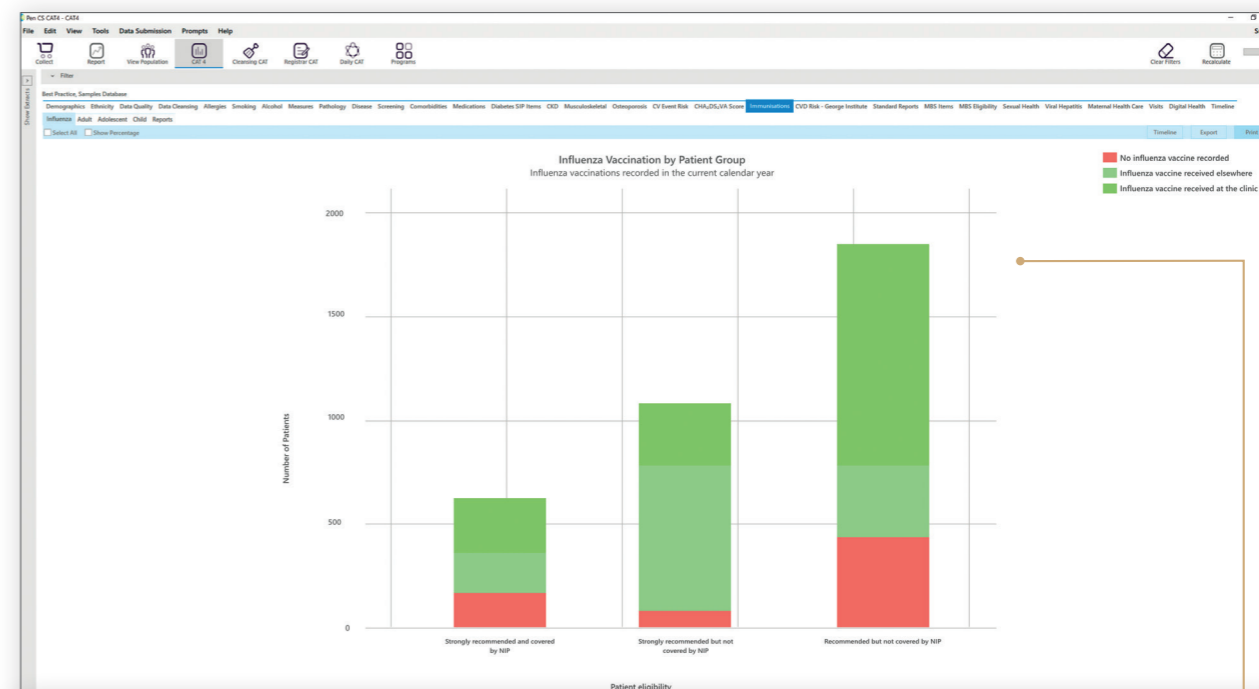
Recommended for vaccination, **NOT** NIP funded

A notification alert automatically appears on the **FLU** app on Topbar when a patient has yet to be vaccinated this season*

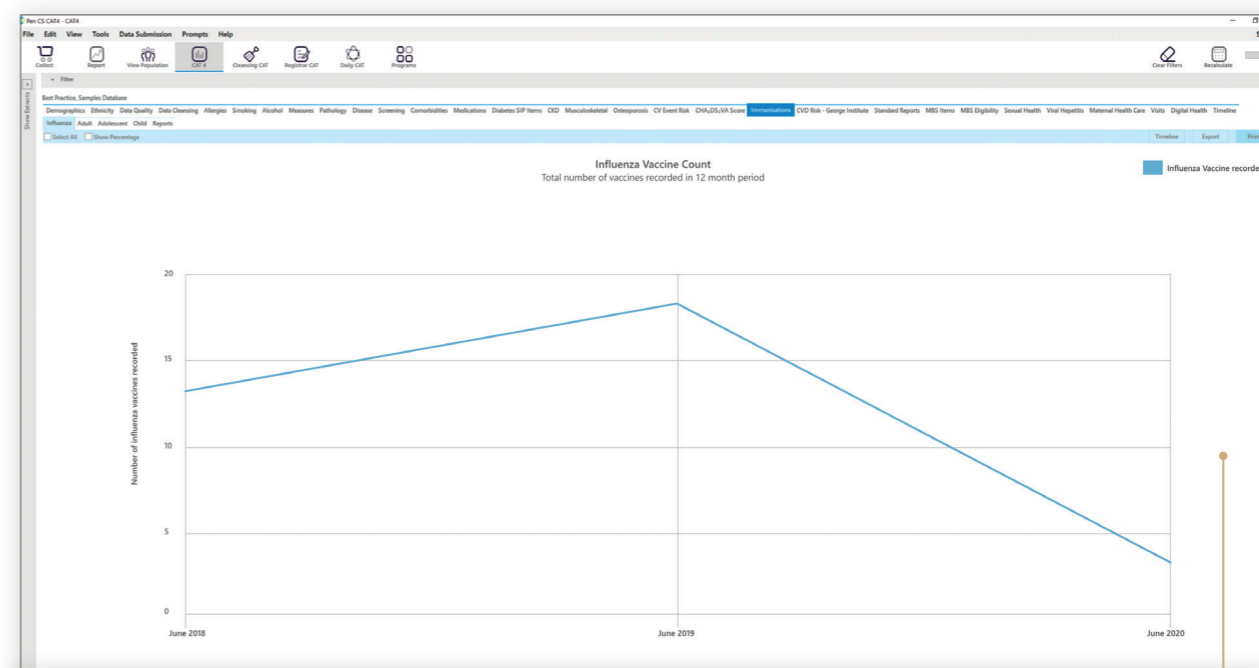
TRACK VACCINE USAGE WITHIN YOUR PRACTICE WITH CAT REPORTS



You can use the **FLU** app and clinical audit tool (CAT) integration to help you identify, filter and send recalls or reminders to patients who have not yet received the influenza vaccination in your clinic.



Influenza vaccine uptake by patient group to enable detailed tracking of clinic targets



Historical view on quantity of influenza vaccines used over the past 3 years to assist in forecasting when pre-ordering vaccines

*Australian Department of Health recommends influenza vaccinations for all people ≥6 months of age.⁴
NIP: National Immunisation Program; **PIP QI:** Practice Incentive Payment Quality Improvement.

Access these influenza reports by clicking the 'immunisation' tab in your CAT.