

MBS Items

The graph provides information on a number of MBS items claimed by the practices. The data is displayed as a bar graph of:

- Count of MBS items recorded
- Count of MBS items not recorded

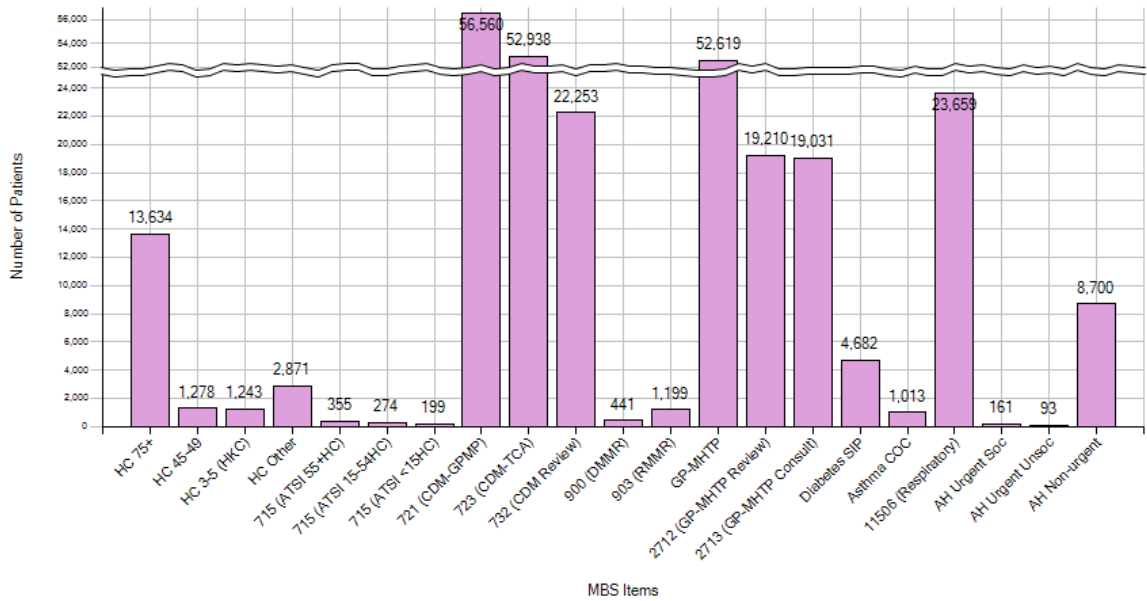
NOTE: You have to use the Results filter to find MBS items that have been billed in a specific time period.

MBS Items Count

[View Map](#)
[View Report](#)
[View Timeline](#)
[Download](#)

Count of Patients by MBS Item

No filters Applied for December 2015 audit month. Generated on 12/01/2016 11:50 AM



MBS Items	
MBS Items currently collected are:	
	Old item numbers still collected
Health Assessment 75+ where Health Assessment includes item numbers: 701, 703, 705, 707, 224, 225, 226, 227	700 – 75+ Health Assessment 702 – 75+ Health Assessment (home)
Health Assessment 45-49 where Health Assessment includes item numbers: 701, 703, 705, 707, 224, 225, 226, 227	717 – 45-49 Health Assessment

<p>Health Assessment 3-5 (HKC) where Health Assessment includes item numbers: 701, 703, 705, 707, 224, 225, 226, 227, also includes item number 10986</p>	
<p>Health Assessment Other where Health Assessment includes item numbers: 701, 703, 705, 707, 224, 225, 226, 227</p> <p>This can cover a number of case where health assessments are performed for any of the following patient groups:</p> <ul style="list-style-type: none"> • a type 2 diabetes risk evaluation for people aged 40-49 years with a high risk of developing type 2 diabetes as determined by the Australian Type 2 Diabetes Risk Assessment Tool • a comprehensive medical assessment for permanent residents of residential aged care facilities • a health assessment for people with an intellectual disability • a health assessment for refugees and other humanitarian entrants 	
715, 228 (55+ Health Assessment)	704/706 – 55+ AHC
715, 228 (15-54 Health Assessment)	710 – 15-54 AHC
715, 228 (<15 Health Assessment)	708 – CHC
721, 229 – CDM - GP Management Plan	
723, 230 – CDM - Team Care Arrangement	
732, 233 – CDM Review	725 – GP Management Plan Review 727 – Team Care Arrangement Review
10987 - PN/AHP review for indigenous patients	
10997 - PN/AHP review for patients with a chronic condition	
900, 245 – DMMR	
903, 249 – RMMR	
GP MH Care Plan – includes item numbers: 2700, 2701, 2715, 2717, 272, 276, 277 (from 1 st Nov 2011)	2702 – GP MH Care Plan 2710 – GP MH Care Plan
2712 – GP MH Care Plan Review	
2713 – GP MH Care Consultation	

Diabetes SIP – includes item numbers: 2517, 2518, 2521, 2522, 2525, 2526, 2620, 2622, 2624, 2631, 2633, 2635, 259, 260, 261, 262, 263, 264	
Asthma COC – includes item numbers: 2546, 2547, 2552, 2553, 2558, 2559, 2664, 2666, 2668, 2673, 2675, 2677, 265, 266, 268, 269, 270, 271	
11506, 11503, 11505, 11507, 11508, 11512 - Respiratory	
AH Urgent Soc – includes items 597, 598	
AH Urgent Unsoc – includes items 599, 600	
AH Non-Urgent – includes items 5000, 5020, 5040, 5060, 5200, 5203, 5207, 5208 5003, 5010, 5023, 5028, 5043, 5049, 5063, 5067, 5220, 5223, 5227, 5228, 5260, 5263, 5265, 5267	
MP Telehealth at consulting room - includes items 2100, (attendance), 2126 (attendance < 20mins), 2143 (attendance > 20 mins), 2195 (attendance > 40 mins), 812, 829, 867, 873, 885, 892	
MP Telehealth not at consulting room - includes items 2122 (attendance), 2137 (attendance < 20mins), 2147 (attendance > 20 mins), 2199 (attendance > 40 mins), 827, 868, 869, 881, 891	
PN or AHW - includes items 10983 (attendance)	
PN or AHW at RACF - includes items 10984 (attendance)	
NP Telehealth - includes items 82220 (attendance < 20mins), 82221 (attendance > 20 mins), 82222 (attendance > 40 mins)	

NP Telehealth at RACF - includes items

82223 (attendance < 20mins), 82224 (attendance > 20 mins), 82225 (attendance > 40 mins)

NP Consult - includes items

82200 (attendance), 82205 (attendance < 20mins), 82210 (attendance > 20 mins), 82215 (attendance > 40 mins)

Some item numbers have a follow up item number attached. For example, patients who have had a 2710 (Mental Health Plan) should have a follow up 2712 (Review of Mental Health Plan). You are able to identify patients that have not had the follow up item number by using selecting item 2710 from the recorded tab and item 2712 from the not recorded tab and using the 'Report' button to do a cross-tabulation.