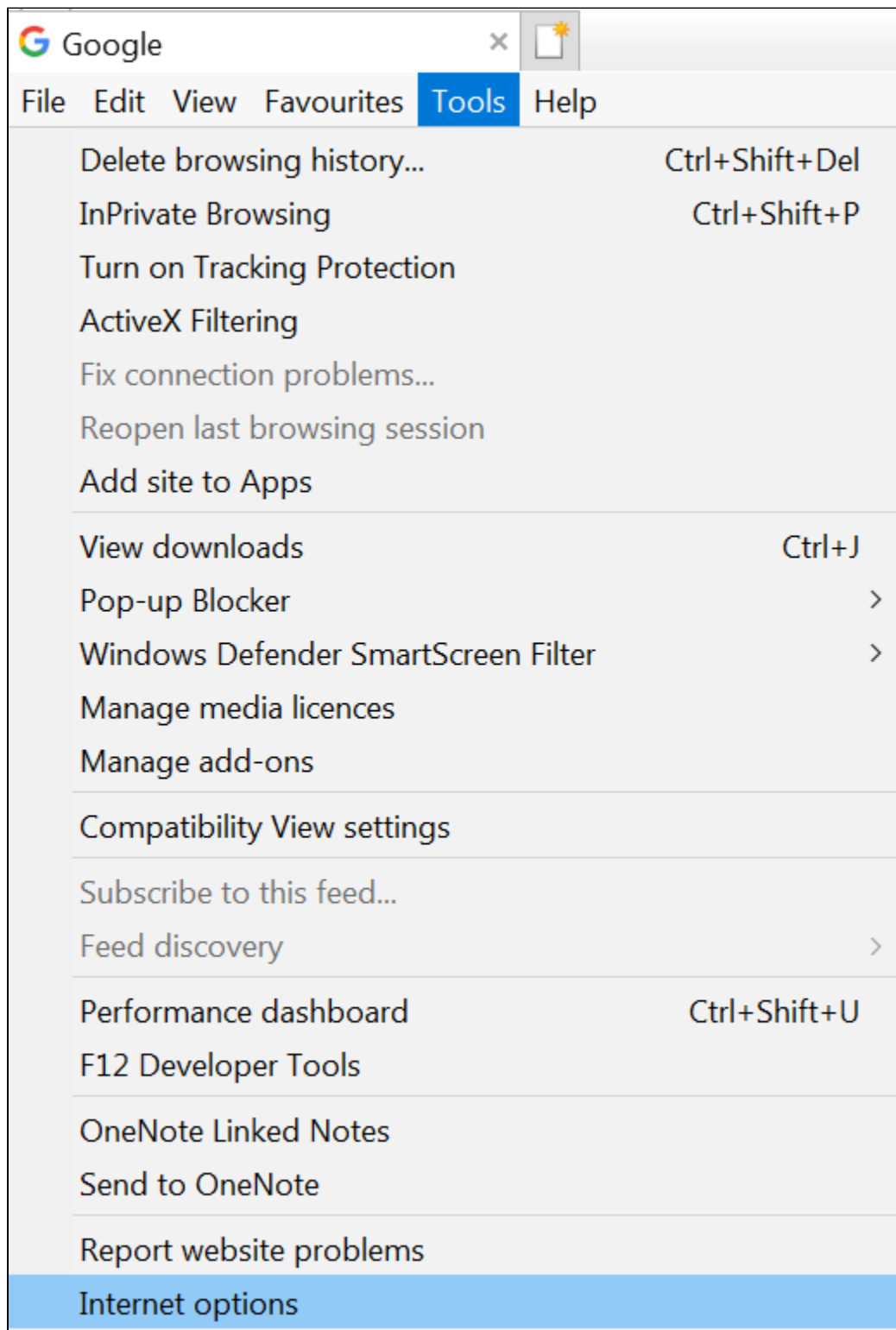


Installing The Nash Certificate For Chrome And Internet Explorer

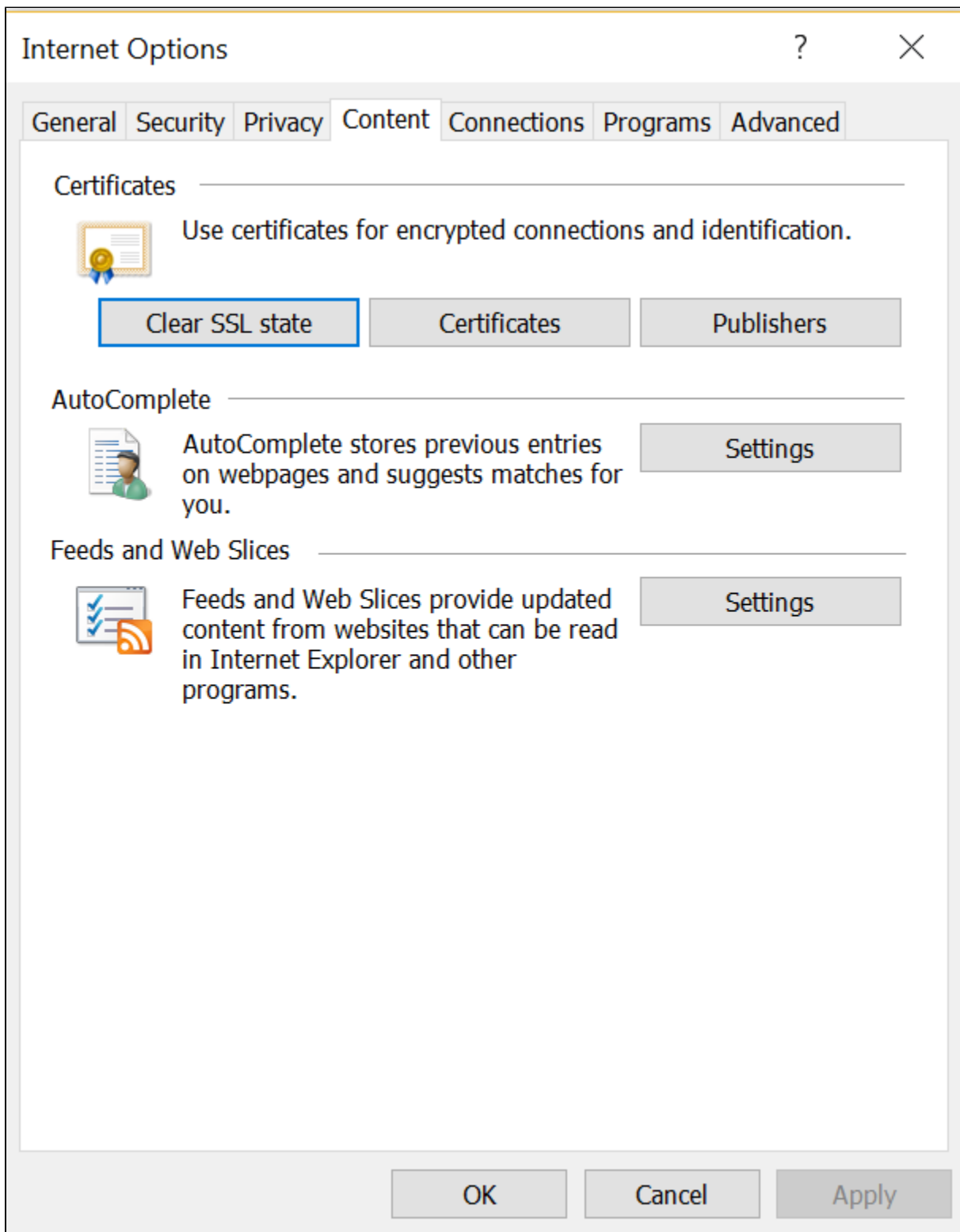
Note: There are cases whereby the NASH Certificate may not need to be configured on each client PC dependent on the Network configuration as sometimes this configuration is automatically deployed to client PC's depending on the Network configuration.

1. Open the Web Browser Internet Explorer
2. Click on **TOOLS > INTERNET OPTIONS** from the menu bar
3. Click on the **CONTENT** tab
4. Click on **CERTIFICATES**
5. Click on the **PERSONAL** tab
6. Click on **IMPORT** and click Next
7. Click on 'Browse' under the heading **CERTIFICATE**
8. Select the file types as **ALL**
9. Find the NASH Certificate located on your Network or on the CD. The file is named **Fac_Sign.p12**
10. Once the NASH Certificate is located, highlight the file and click **OPEN**
11. Click **Next**
12. Enter the NASH password and select all options except the first option shown in the list reading **Enable strong private key protection**. You will be prompted every time the private key is used by an application if you enable this option'.
13. Click **Next**
14. Select **Place all certificates in the following store**. If Personal is not showing as the Certificate Store, click 'Browse' and select 'Personal'
15. Click **Next** and then click on Finish. A message should appear reading 'The import was successful'.

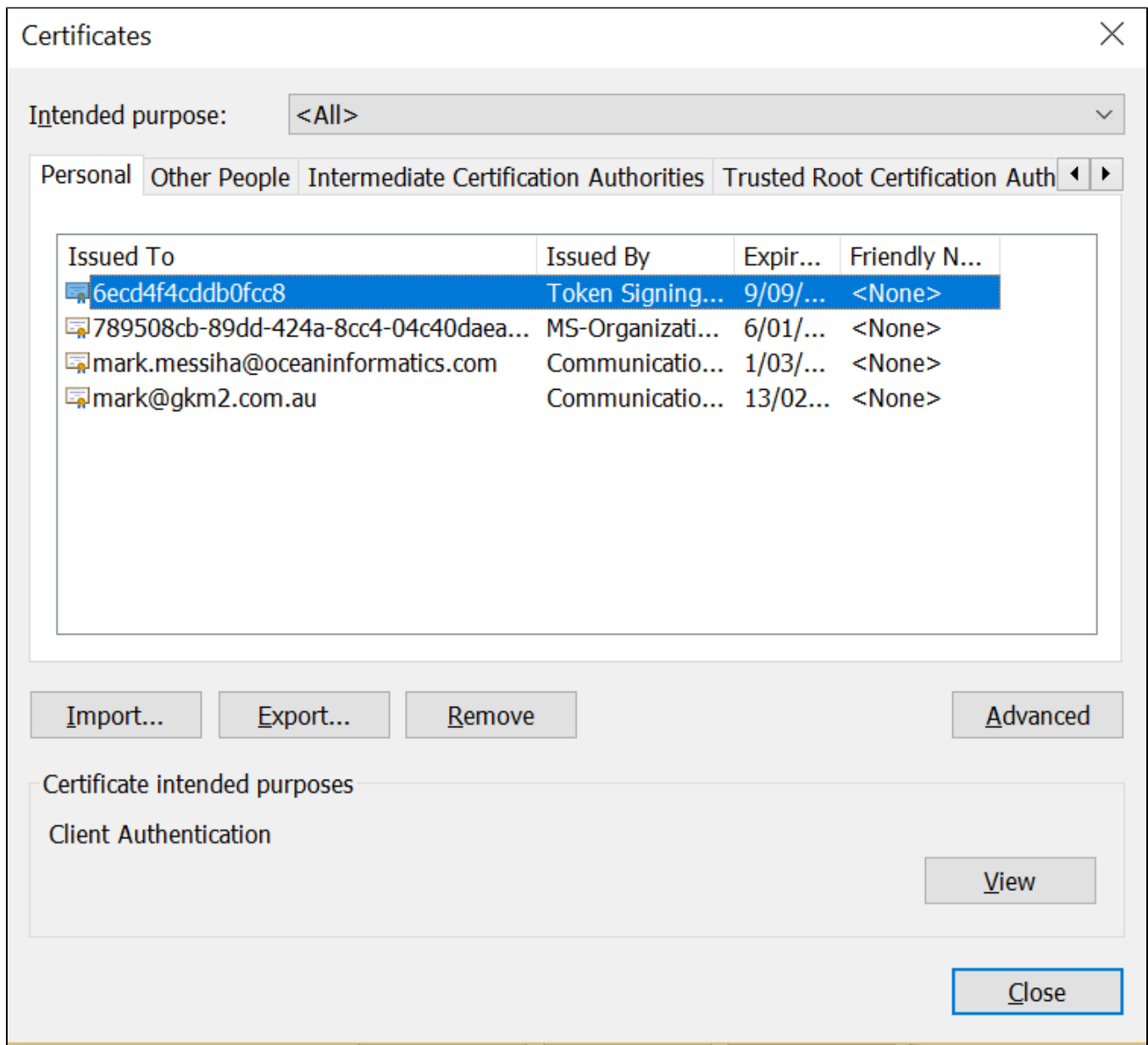
Tools > Internet Options Within Internet Explorer




Content Tab within Internet Options





Windows Certificate Store With Personal Tab Selected



Certificate Import Wizard



 Certificate Import Wizard

File to Import
Specify the file you want to import.

File name:

Note: More than one certificate can be stored in a single file in the following formats:
Personal Information Exchange- PKCS #12 (.PFX,.P12)
Cryptographic Message Syntax Standard- PKCS #7 Certificates (.P7B)
Microsoft Serialised Certificate Store (.SST)

Enter NASH Certificate Password. Tick All Options Except The First Option



Certificate Import Wizard

Private key protection

To maintain security, the private key was protected with a password.

Type the password for the private key.

Password:

••••••••

☐ Display Password

Import options:

- ☐ Enable strong private key protection. You will be prompted every time the private key is used by an application if you enable this option.
- ☒ Mark this key as exportable. This will allow you to back up or transport your keys at a later time.
- ☐ Protect private key using virtualised-based security(Non-exportable)
- ☒ Include all extended properties.

Next

Cancel

Select Personal Store To Install NASH Certificate To Personal Store



Certificate Import Wizard

Certificate Store

Certificate stores are system areas where certificates are kept.

Windows can automatically select a certificate store, or you can specify a location for the certificate.

- ☐ Automatically select the certificate store based on the type of certificate
- ☒ Place all certificates in the following store

Certificate store:

Personal

Browse...

Next

Cancel

Certificate Imported Successfully

Certificate Import Wizard



The import was successful.

OK