

Choosing and configuring your Billing System

The following billing systems are supported:

- MD3 and Pracsoft OR Best Practice Management OR Mediflex OR Zedmed OR 'The Practice'
- BP and BP Management OR Pracsoft OR Mediflex OR Zedmed OR 'The Practice'
- practiX
- Communicare
- Zedmed
- MedTech32
- MMEx

MD and BP users will need to configure their preferences for their Billing Software.

MedicalDirector 3

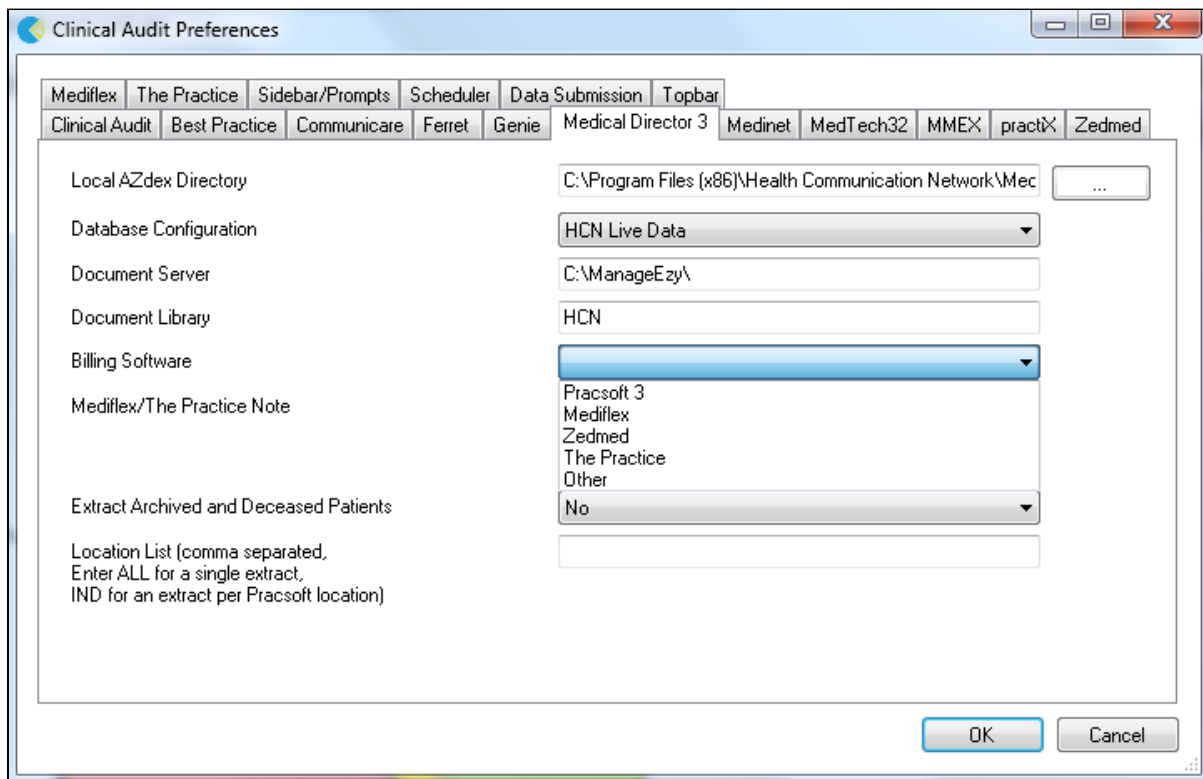
Go to the Medical Director 3 tab. Choose your billing system from the Billing Software drop-down list

The screenshot shows the 'Clinical Audit Preferences' dialog box with the 'Medical Director 3' tab selected. The dialog has a top bar with tabs for Mediflex, The Practice, Sidebar/Prompts, Scheduler, Data Submission, Topbar, Clinical Audit, Best Practice, Communicare, Ferret, Genie, Medical Director 3, Medinet, MedTech32, MMEx, practiX, and Zedmed. The 'Medical Director 3' tab is active. The main area contains several configuration fields: 'Local AZdex Directory' with a text box showing 'C:\Program Files (x86)\Health Communication Network\Mec' and a browse button; 'Database Configuration' with a dropdown menu showing 'HCN Live Data'; 'Document Server' with a text box showing 'C:\ManageEzy\''; 'Document Library' with a text box showing 'HCN'; 'Billing Software' with a dropdown menu showing 'Pracsoft 3', 'Mediflex', 'Zedmed', 'The Practice', and 'Other'; 'Mediflex/The Practice Note' with a text box; 'Extract Archived and Deceased Patients' with a dropdown menu showing 'No'; and 'Location List (comma separated, Enter ALL for a single extract, IND for an extract per Pracsoft location)' with a text box. At the bottom right are 'OK' and 'Cancel' buttons.

Field	Value
Local AZdex Directory	C:\Program Files (x86)\Health Communication Network\Mec
Database Configuration	HCN Live Data
Document Server	C:\ManageEzy\
Document Library	HCN
Billing Software	Pracsoft 3
Mediflex/The Practice Note	
Extract Archived and Deceased Patients	No
Location List (comma separated, Enter ALL for a single extract, IND for an extract per Pracsoft location)	

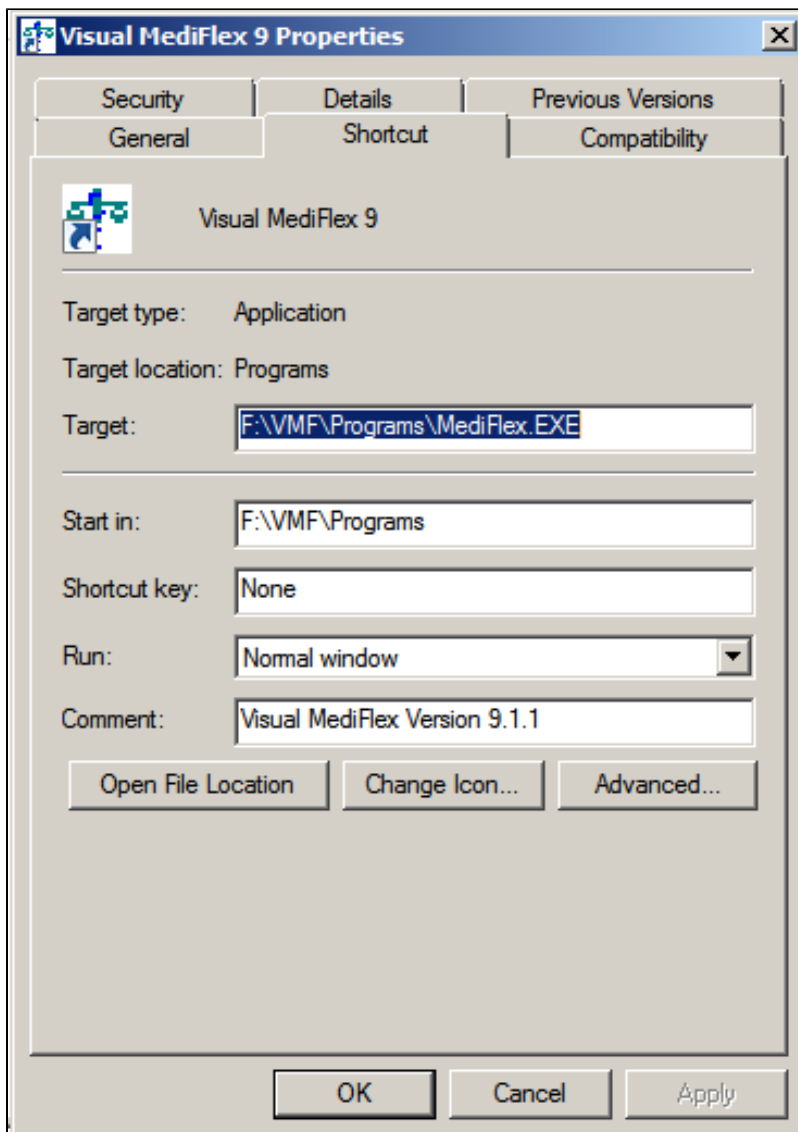
BestPractice

Go to the BestPractice tab. Choose your billing system from the Billing Software drop-down list



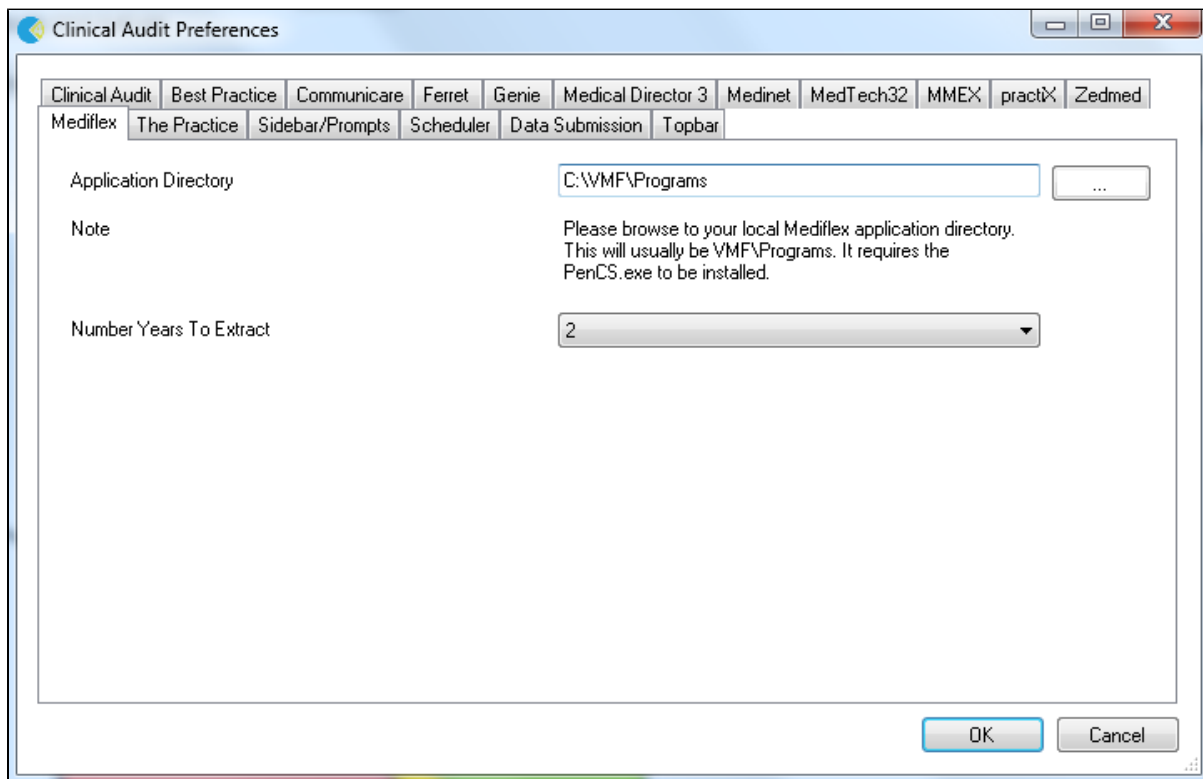
Mediflex users

From the Mediflex tab: Configure the 'Application Directory' to point to the Mediflex folder which will usually be C:\VMF\Programs. This can be different depending on your setup and the VMF folder might be in a different location. You can locate the VMF folder by right-clicking on the Mediflex icon and then on 'Properties' - in the example below it is on the F: drive

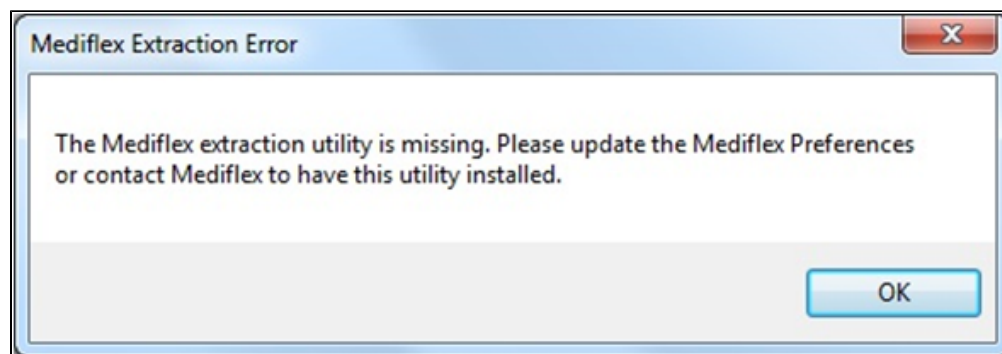


. We don't recommend to extract more than 2 years due to the memory requirements of the extraction.

Please ensure that you set the correct billing system for your clinical system, i.e. for MD3 or BestPractice on the respective configuration tab in the CAT4 preferences.



If the Mediflex extractor is missing from your system or the folder is not configured correctly, the following error message will be displayed. Please contact Mediflex so they can install the utility for you.



'The Practice' users

From the 'The Practice' tab: Configure the 'Application Directory' to point to the correct folder which will usually be C:\ThePractice. To be able to extract Medicare information from 'The Practice' you have to have the file 'ThePracticePenCS.exe' installed which you can obtain from the software vendor.

Please ensure that you set the correct billing system for your clinical system, i.e. for MD3 or BestPractice on the respective configuration tab in the CAT4 preferences.

Clinical Audit Preferences

Clinical AuditBest PracticeCommunicareFerretGenieMedical Director 3MedinetMedTech32MMEXpractiXZedmed

MediflexThe PracticeSidebar/PromptsSchedulerData SubmissionTopbar

Billing Integration Only Note

The Practice is available for Billing integration only with Medical Director 3 and Best Practice.

Application Directory

C:\ThePractice

...

Note

Please browse to your local The Practice application directory. This will usually be C:\ThePractice. It requires the ThePracticePenCS.exe to be installed.

Number Years To Extract

6

OK

Cancel