

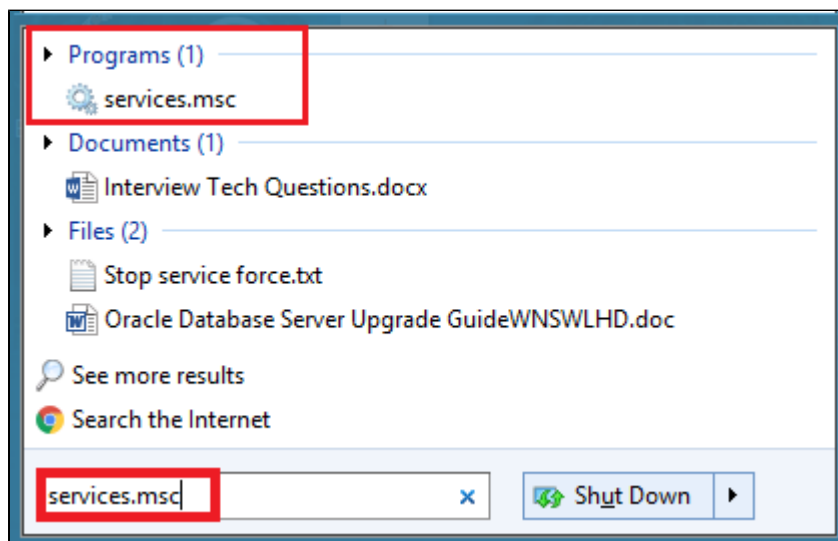
Troubleshooting - Topbar Service Restart

The Topbar service might have to be restarted if you are experiencing problems. Restarting the service on your server might require IT support to assist. If you have access to your server you can follow the steps below to restart the Topbar service without having to restart your server. Your clinical system will not be affected by restarting the Topbar service!

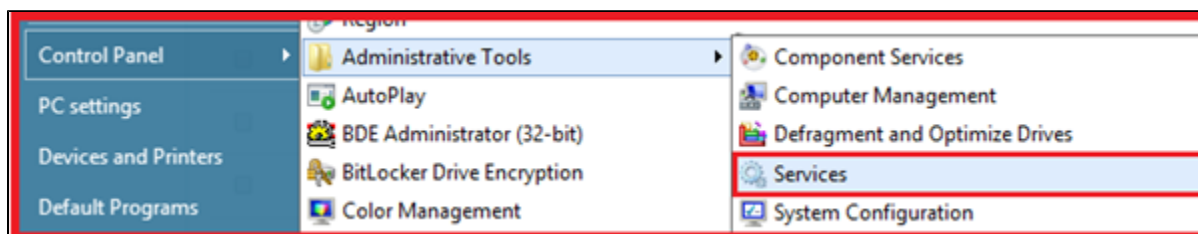
STEP 1: Go to Services Window of your Topbar Server computer - in most cases this is your server running your clinical software as well.

How to identify the computer installed Topbar Server: if you can find PCS Clinic Monitoring Services and PCS Clinic Service

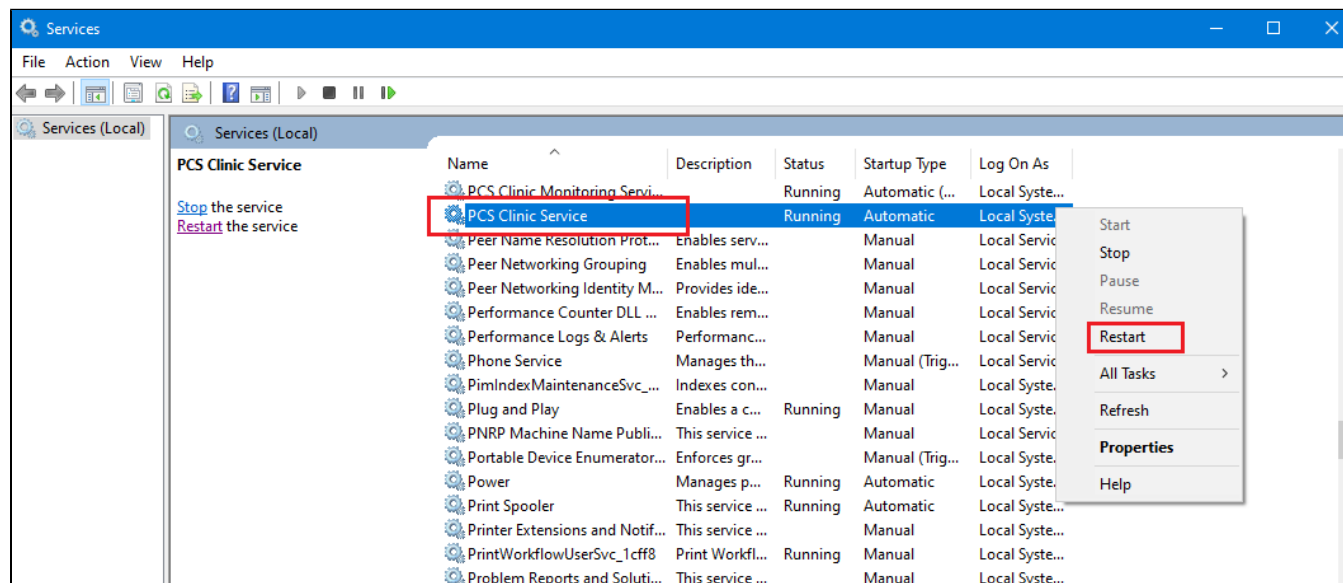
Type **services.msc** in Windows Search and Press **Enter**



Or Go to **Control Panel/Administrative Tools/Services**



STEP 2: Restart PCS Clinic Service.



STEP 3: Verify with Topbar Desktop App

Restart the Topbar Desktop App